



---

Available works by the artist  
2025

## Ann Beate Tempelhaug

Ann Beate Tempelhaug's artistic practice claims affiliation with three distinct art traditions or histories: painting, sculpture, and ceramics. Within the paradigm of Western Modernism, according to American art critic Clement Greenberg, painting and sculpture are art forms that have been increasingly abstract, self-contained, autonomous, and medium specific. She combines painted surfaces and a physical, sculptural form that claims a presence. While painting is primarily a medium for the eye, again according to Greenberg, sculpture has a spatial relationship with the body as well, stressing the emotionally experience of the work over intellectual understanding.



**Ann Beate Tempelhaug (NO)**  
Ceramicist Artist

---

Ann Beate Tempelhaug was born in Mosjøen, in northern Norway. Educated in the Arts and Crafts at the University of Bergen. Her work is collected by the National Museum Oslo, and the Art museums in Bergen, Trondheim and Kristiansand. Among her recent solo exhibitions are KRAFT Gallery Bergen, Bo muldsfabriken Arendal, Agder Art Center and Arteriet Gallery in Kristiansand. Among the recent group exhibitions are the Art Fairs Collective New York and Collect London. Awarded commissions at the Universities of Kristiansand and Bergen. She has received several national grants, most recently the National Art Grant for 5 years. As the Danish artist Per Kirkeby once said: “Landscapes are always about beauty and death.” “By taking the landscape as inspiration, my work connects to my own life and my memories,” she states. Taking things one day at a time, Norwegian ceramic artist Ann Beate Tempelhaug has been creating large scale ceramic objects for over thirty years. Her freely shaped and sculpted ceramic objects are painted completely

by hand, on both their surface and borders, a testament to her curiosity and dedication to finding beauty in everyday colours and shapes. In her creative process, Tempelhaug proposes new ways of understanding how even the smallest transient moments can affect our larger context. Spazio Nobile presented her first solo show *Nord* at the gallery in 2023 and is collaborating on her first solo exhibition with Fondazione Officine Saffi in Milan in Spring 2025. Tempelhaug's works are collected by the National Museum of Oslo and the art museums of Bergen, Trondheim and Kristiansand. They are also part of major private collections in Europe and around the world. Spazio Nobile represents her since 2020.



Ann Beate Tempelhaug



Ann Beate Tempelhaug



Ann Beate Tempelhaug



Ann Beate Tempelhaug







Ann Beate Tempelhaug



Ann Beate Tempelhaug

















## *Eclipse (Formørkelse)*

Ceramic wall installation

2025

Stoneware porcelain, glaze

183 x 110 x 15 cm

Unique piece signed by the artist on the back of the ceramic







## *Tide*

Ceramic wall installation

2019

Stoneware porcelain, glaze

110 x 110 x 14 cm

Unique piece signed by the artist on the back of the ceramic



© Alessandra Vinci



## *Color of Heart (Hjertefarger)*

Ceramic wall installation

2025

Stoneware porcelain, glaze

145 x 90 x 15 cm

Unique piece signed by the artist on the back of the ceramic

Collection Fondazione Officine Saffi





## *Moment and Eternity (Øyeblikk og evighet)*

Ceramic wall installation

2025

Stoneware porcelain, glaze

183 x 110 x 15 cm

Unique piece signed by the artist on the back of the ceramic







## *From North*

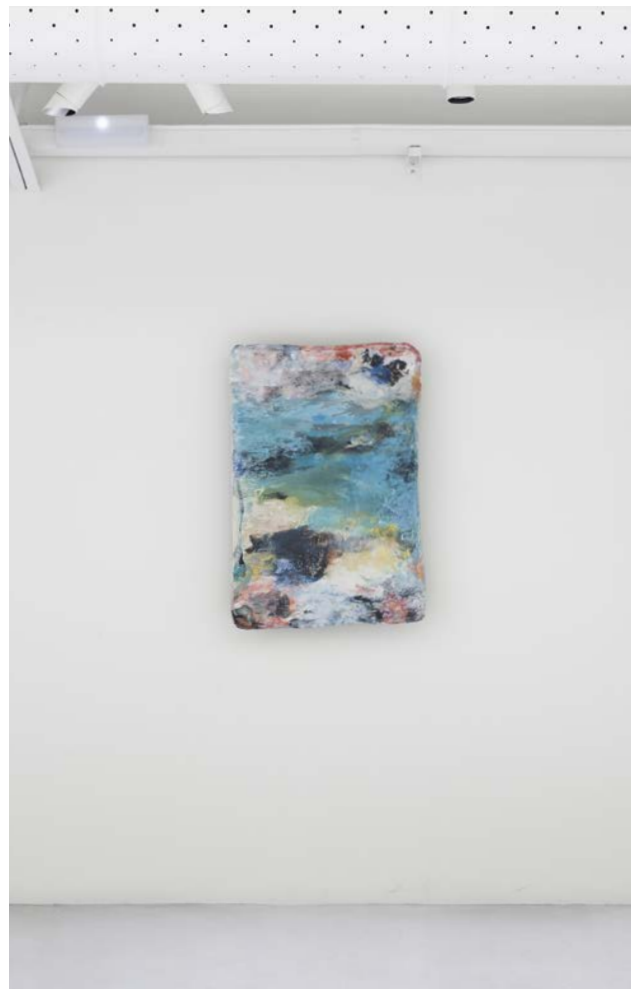
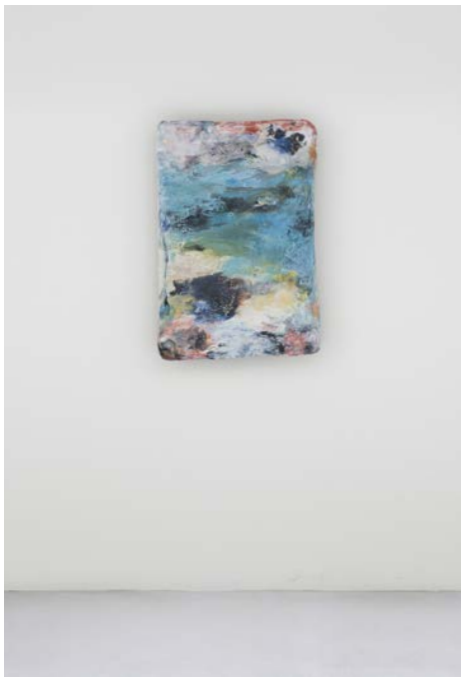
Ceramic wall installation

2025

Stoneware porcelain, glaze

145 x 90 x 15 cm

Unique piece signed by the artist on the back of the ceramic





## *Light Over Sea (Lys over havet)*

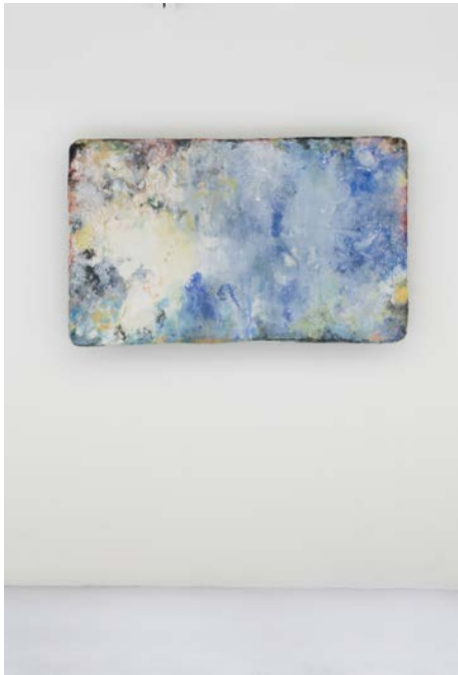
Ceramic wall installation

2025

Stoneware porcelain, glaze

145 x 90 x 15 cm

Unique piece signed by the artist on the back of the ceramic







## *Heart to Heart (Hjerte til hjerte)*

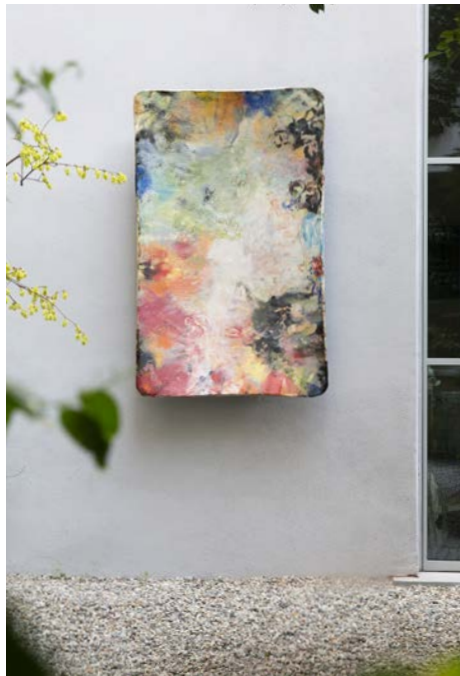
Ceramic wall installation

2025

Stoneware porcelain, glaze

145 x 90 x 15 cm

Unique piece signed by the artist on the back of the ceramic



## *Entity (En annen tid)*

Ceramic wall installation

2025

Stoneware porcelain, glaze

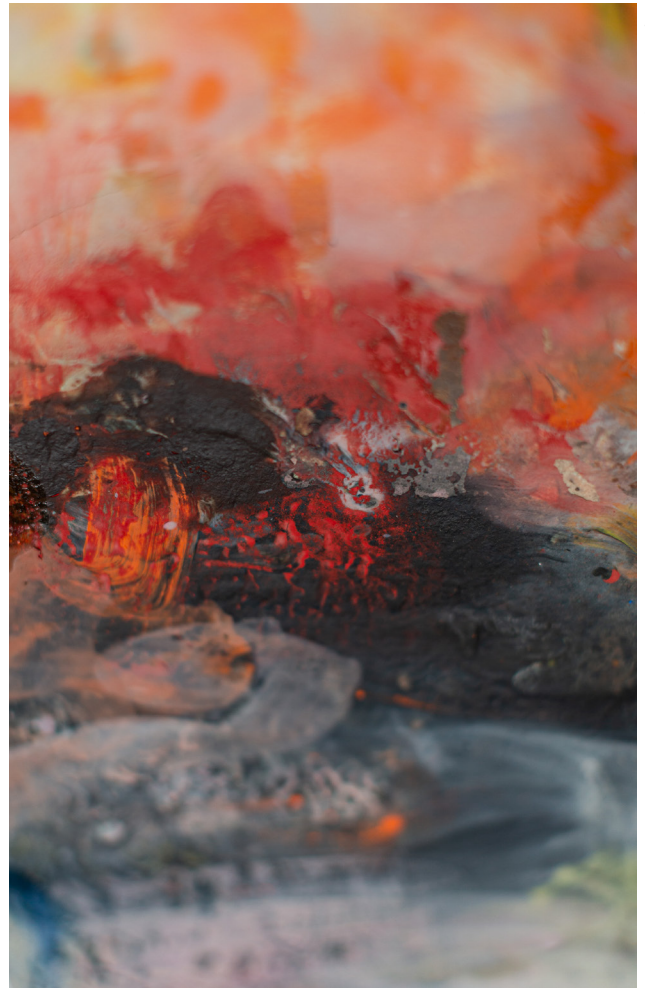
183 x 110 x 15 cm

Unique piece signed by the artist on the back of the ceramic











## *Sea of Fog (Tåkehav)*

Ceramic wall installation

2025

Stoneware porcelain, glaze

145 x 90 x 15 cm

Unique piece signed by the artist on the back of the ceramic









## *Embrace (Skogshjerte liten)*

Ceramic wall installation

2025

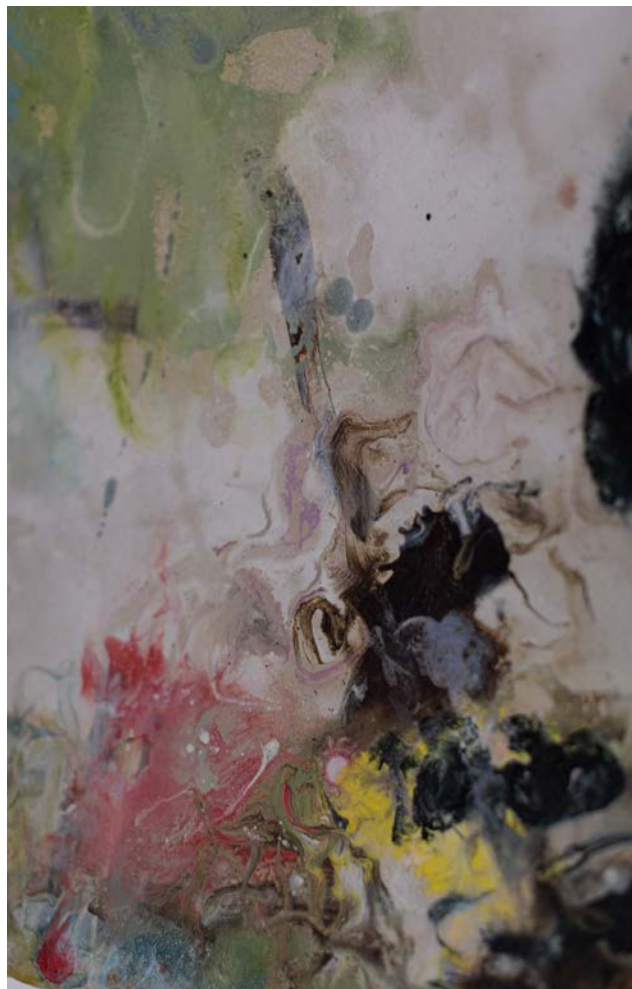
Stoneware porcelain, glaze

106 x 61 x 9 cm

Unique piece signed by the artist on the back of the ceramic









## *As The Days Come (Slik dagen kommer)*

Ceramic wall installation

2024

Stoneware porcelain, glaze

144 x 91 x 14 cm

Unique piece signed by the artist on the back of the ceramic



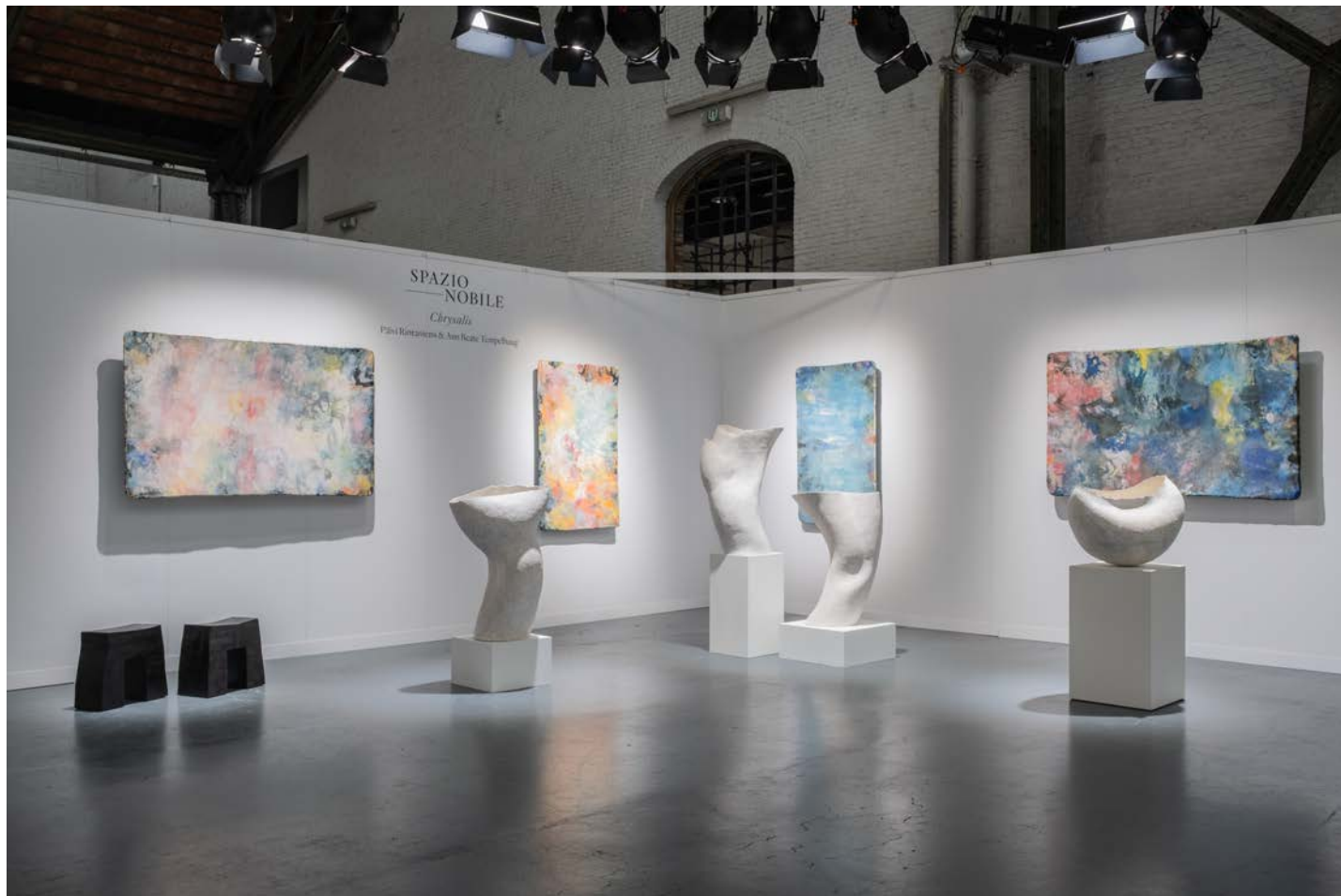
ceramic  
brussels













SPAZIO  
NOBILE

*Chrysalis*

Paivi Rintaniemi & Ann Beate Tempelhaug





PAZIO  
NOBILE  
*Chrysalis*  
niemi & Ann Beate Tempelhaug

SPAZIO  
NOBILE

*Chrysalis*

Päivi Rintaniemi & Ann Beate Tempelhaug





## *Diary (Diarium)*

Ceramic wall installation

2024

Stoneware porcelain, glaze

145 x 90 x 15 cm

Unique piece signed by the artist on the back of the ceramic



ceramic  
brussels









*Like days, nights, years (Som dager, netter, ar)*

Ceramic wall installation

2024

Stoneware porcelain, glaze

185 x 113 x 18 cm

Unique piece signed by the artist on the back of the ceramic



ceramic  
brussels

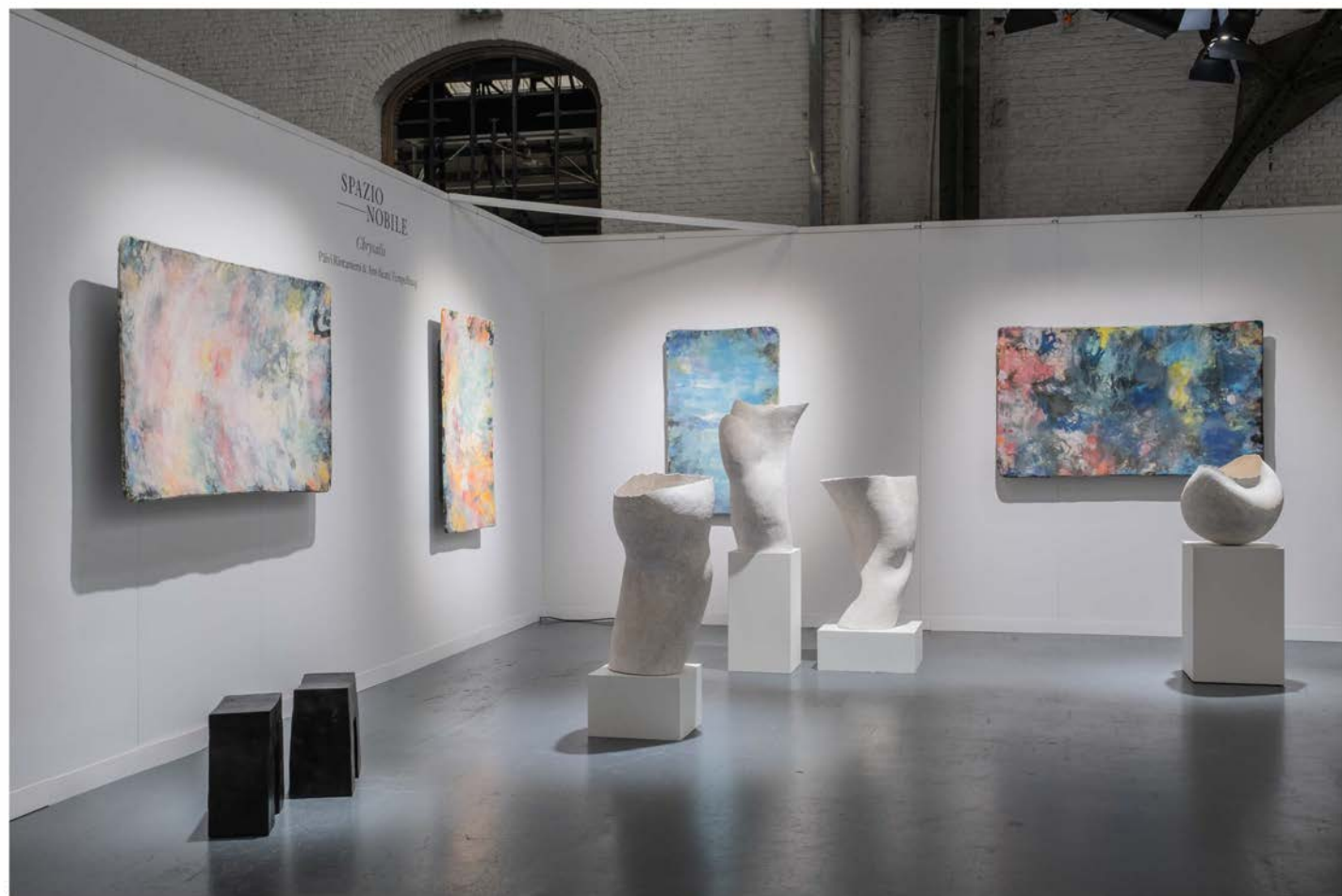


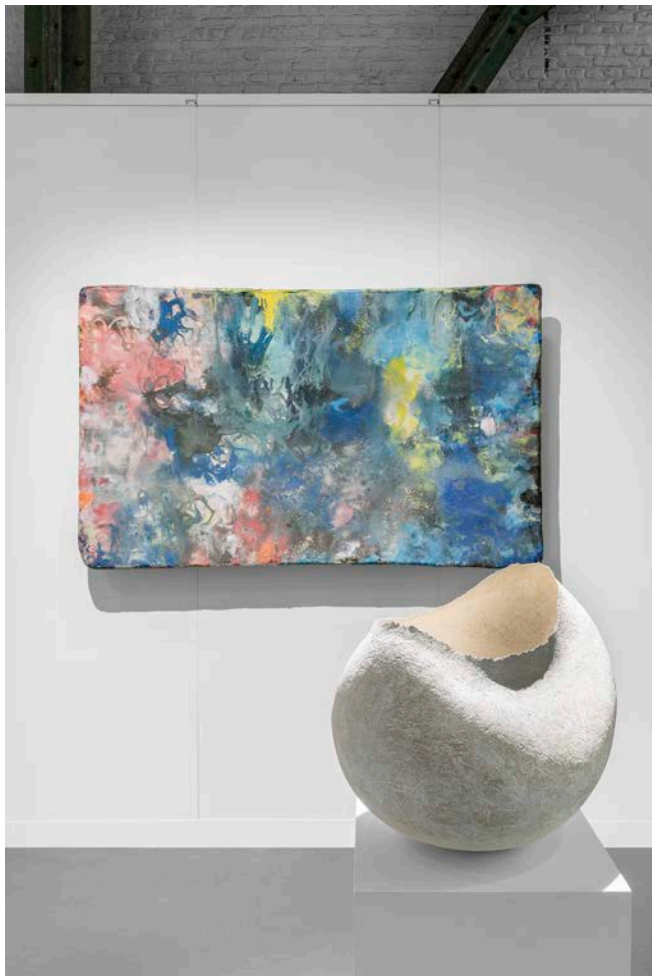




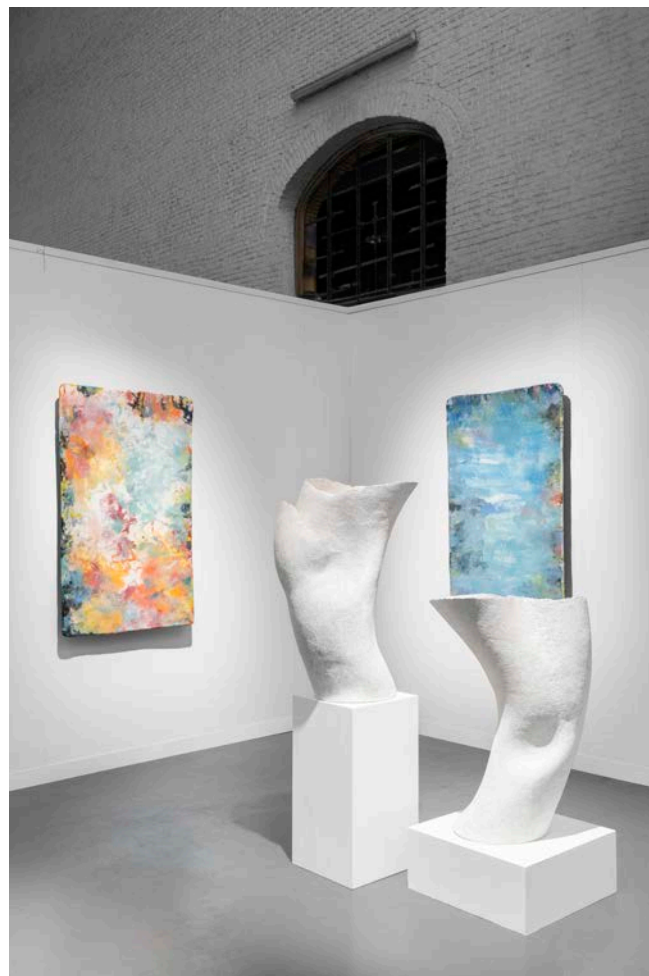








Ann Beate Tempelhaug



Ann Beate Tempelhaug

## *Within Everything (Innenfor alt)*

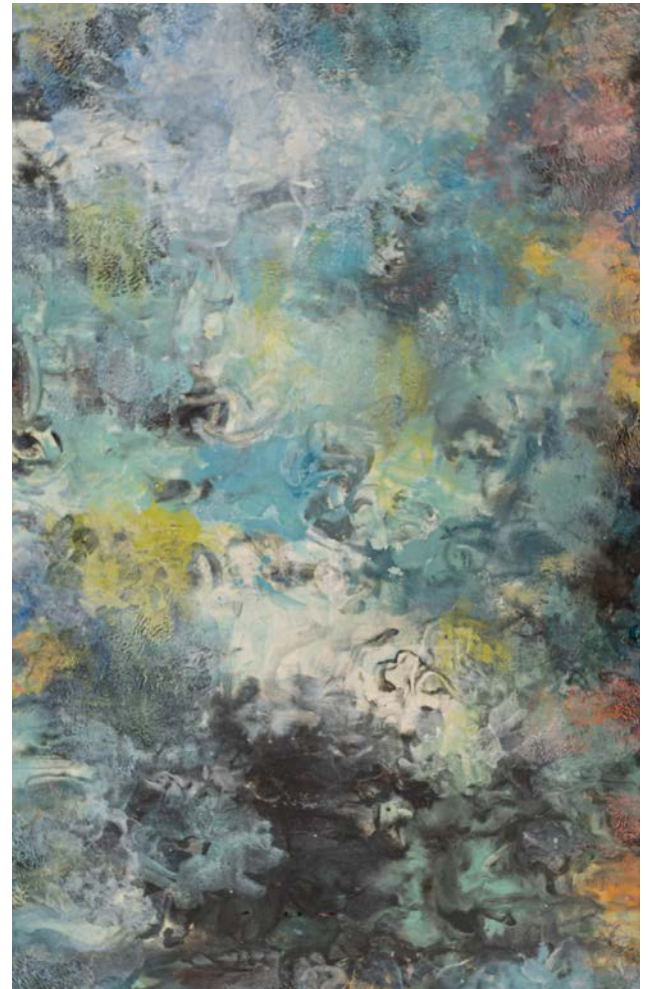
Ceramic wall installation

2024

Stoneware porcelain, glaze

183 x 110 x 16 cm

Unique piece signed by the artist on the back of the ceramic











## *Mirage (Luftspeiling)*

Ceramic wall installation

2023

Stoneware porcelain, glaze

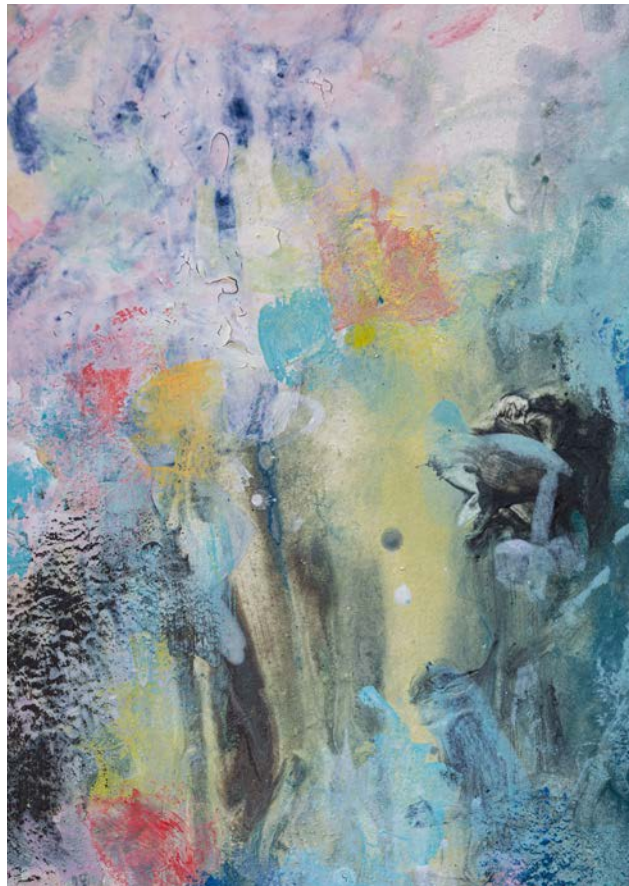
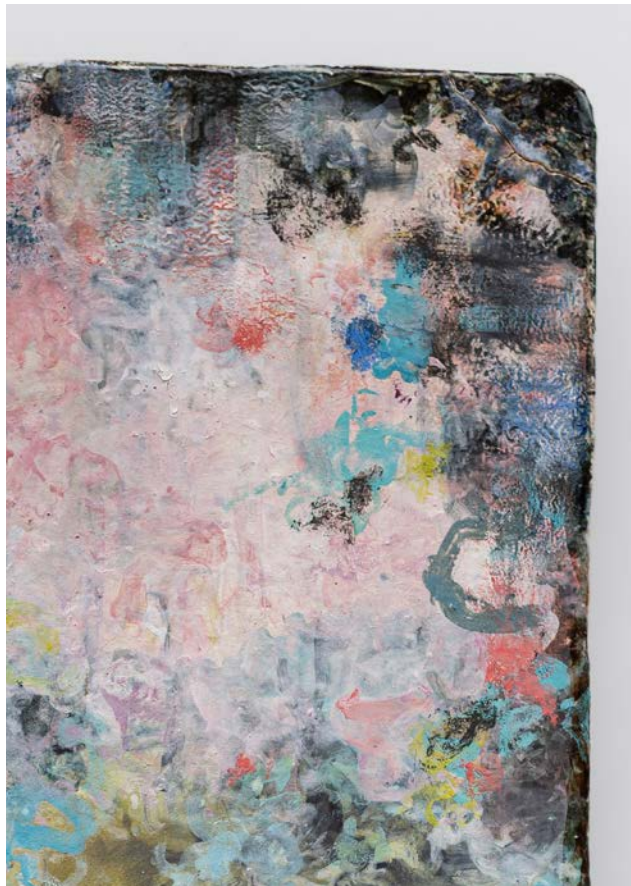
182 x 111 x 15 cm

Unique piece signed by the artist on the back of the ceramic





*Mirage (Luftspeiling)* evokes the celestial light that passes through the clouds, an atmospheric phenomenon in which warm air is less dense than cold air, letting through beams of light that create a fairy-tale effect in the sky and in the eyes. Like *trompe-l'œil* or an optical illusion, the mirage lets an image appear as if in a mirror. Tempelhaug's palette is soft and rich in pastel tones, akin to the refraction of light in a rainbow.

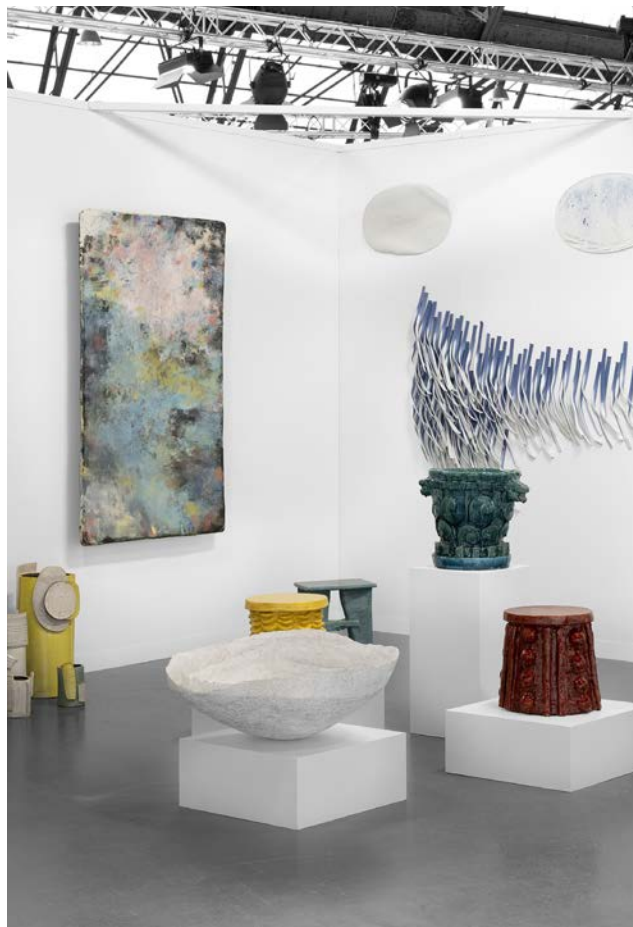




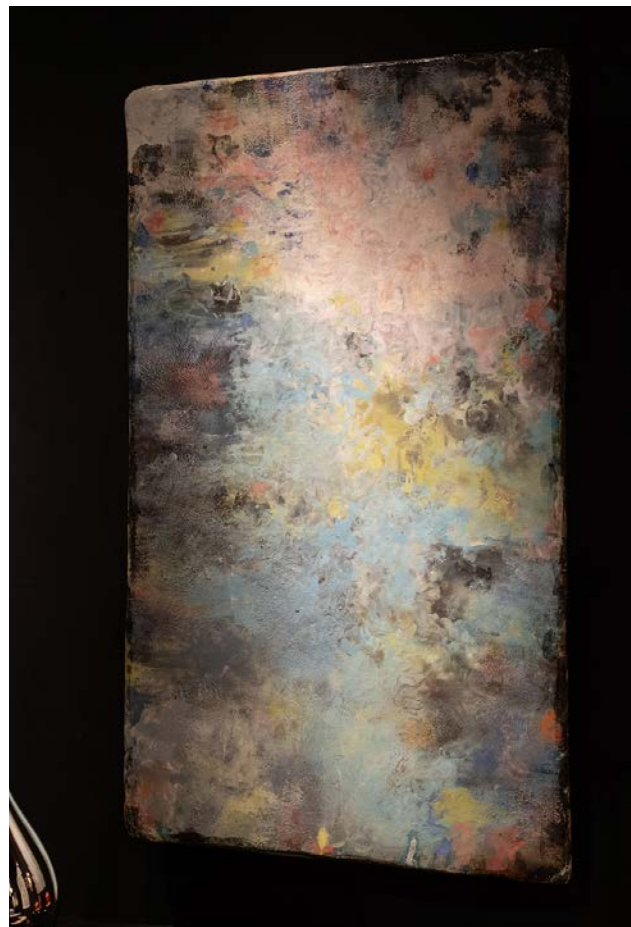








© Hugard Vonverschelde



© Gabriele Abbruzzese



## *Twilight (Skumring)*

Ceramic wall installation

2023

Stoneware porcelain, glaze

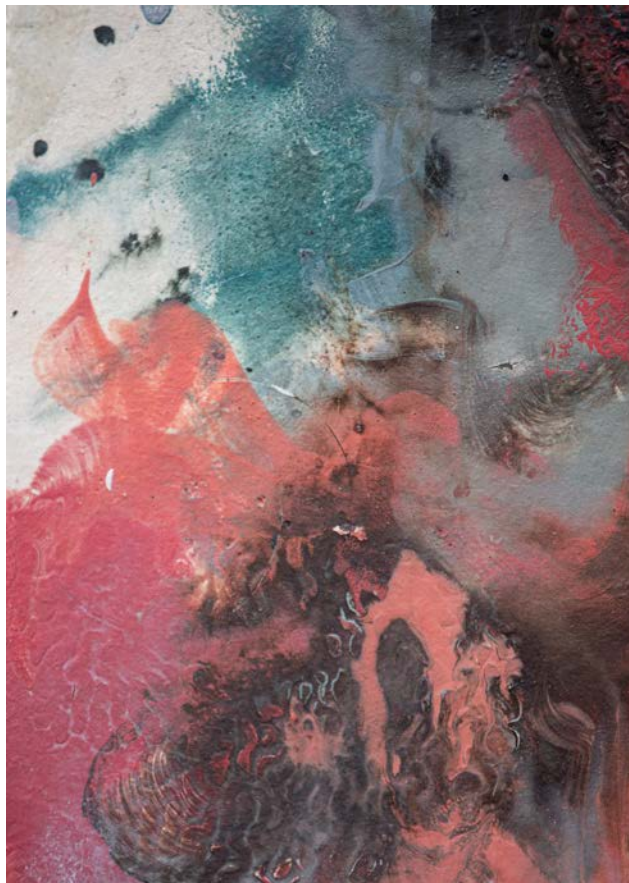
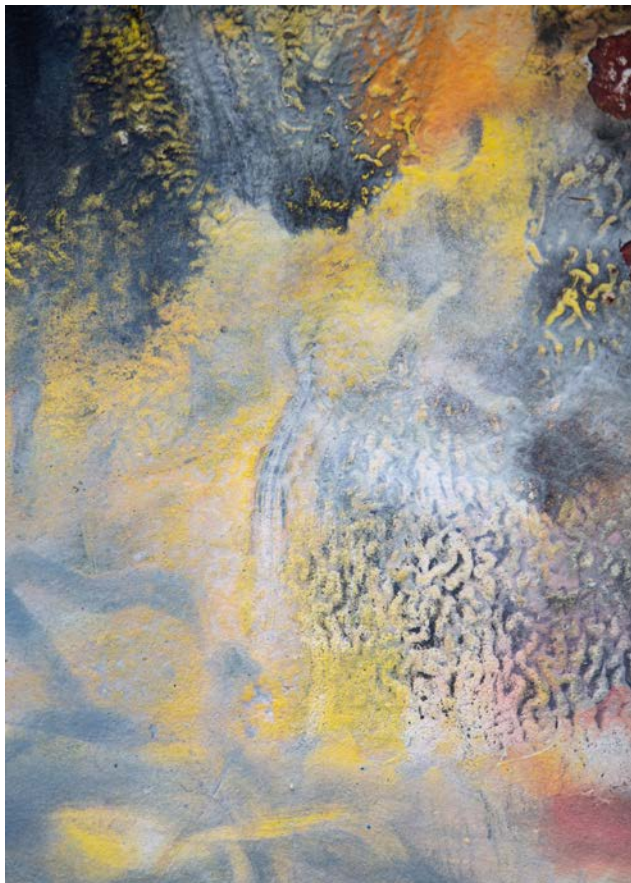
182 x 111 x 15 cm

Unique piece signed by the artist on the back of the ceramic





*Twilight (Skumring)* describes the blue hour, an in-between light, an aurora or a crepuscule that can translate the painter's feelings about herself and the landscape that surrounds her, whether present or imaginary. The shadows are pinkish and bluish, projected like furtive states of mind, sudden incarnations of a passing presence or angel.













## *Ouvert*

Ceramic wall installation

2020

Stoneware porcelain, glaze

184 x 112 x 16 cm

Unique piece signed by the artist on the back of the ceramic













## *Reflection*

Ceramic wall installation

2020

Stoneware porcelain, glaze

184 x 112 x 16 cm

Unique piece signed by the artist on the back of the ceramic







## *Beyond (Bortenfor)*

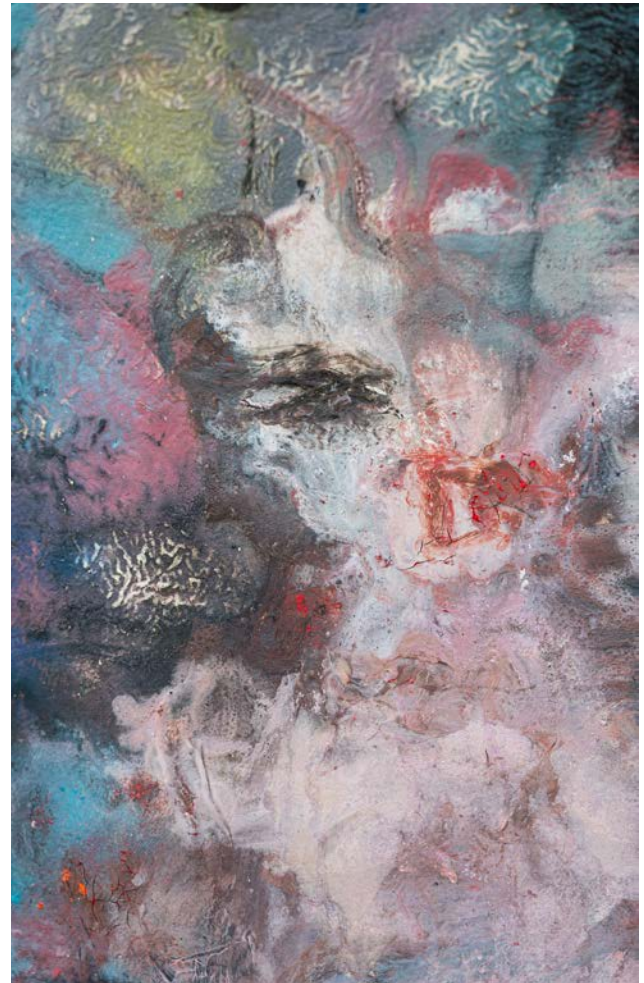
Ceramic wall installation

2023

Stoneware porcelain, glaze

144 x 88 x 17 cm

Unique piece signed by the artist on the back of the ceramic



*Beyond (Bortenfor)* is a darker, more hushed work than *Oblivion*. The artist inscribes her colours as if in a diary. They are writings and traces of memories that cannot be forgotten. Density is very present, with veils of whiteness covering large hidden areas of interior landscapes that reappear as the composition progresses and time passes. An otherworldly energy emanates from them, piercing through the layer of cloudy vapour.



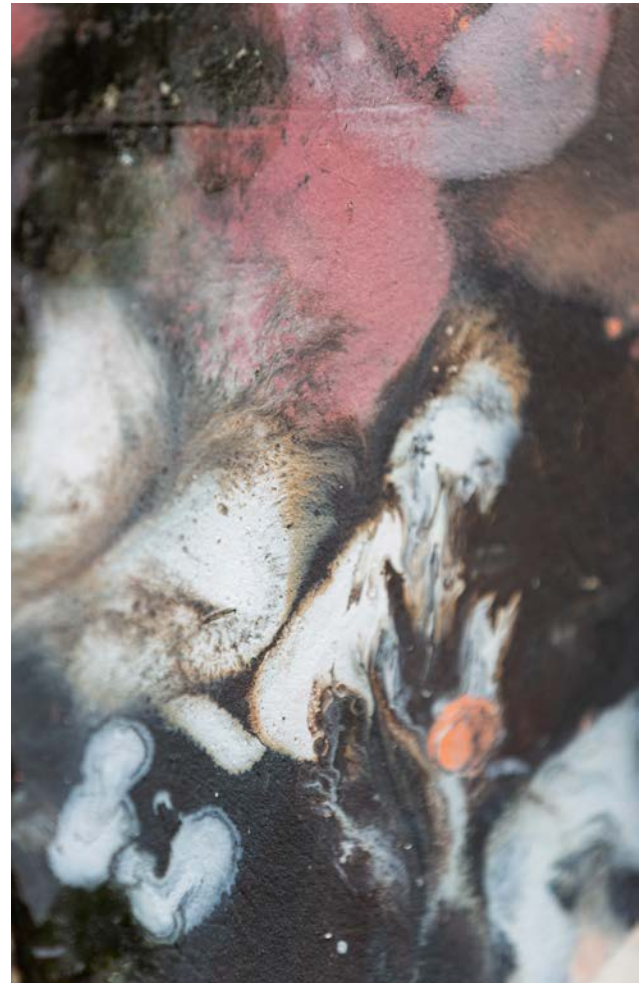






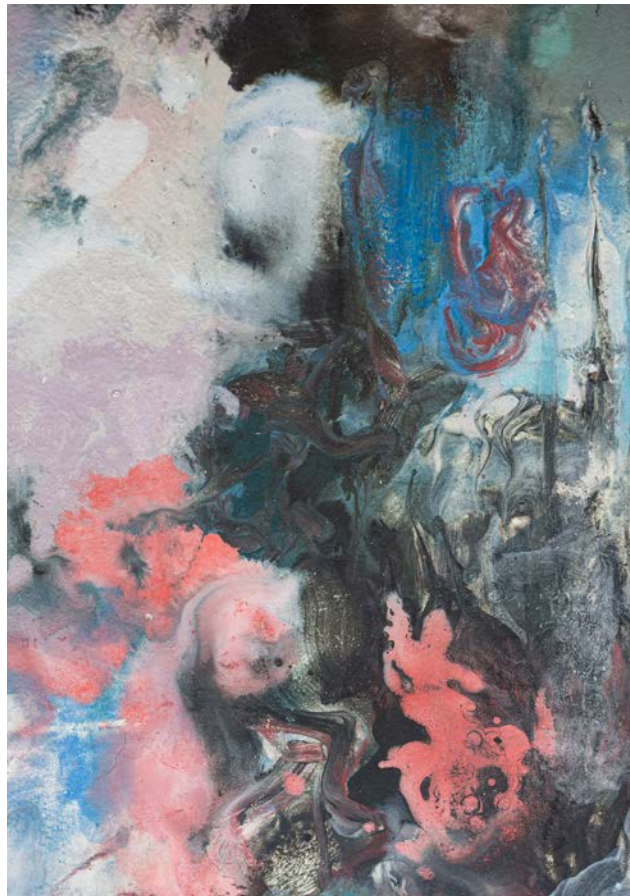
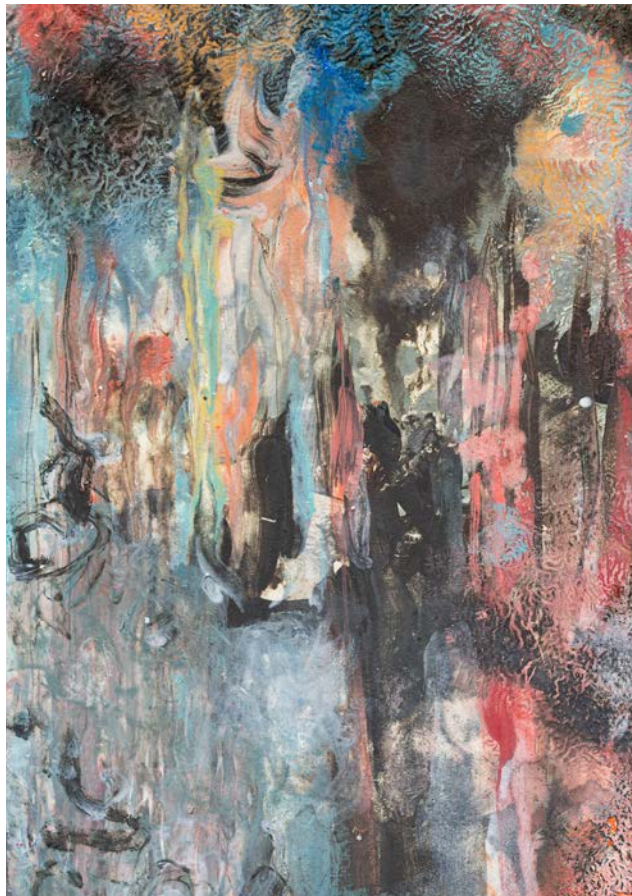
## *Prelude (Forspill)*

Ceramic wall installation  
2023  
Stoneware porcelain, glaze  
143 x 90 x 13 cm  
Unique piece signed by the artist on the back of the ceramic





*Prelude (Forspill)* is like a musical composition open to visual tactility and contemplation. This ode to light in its varying intensities is interspersed with subtle touches of colour that make this work very painterly yet delicately abstract. It is undoubtedly one of the most rhythmic free forms in the exhibition.

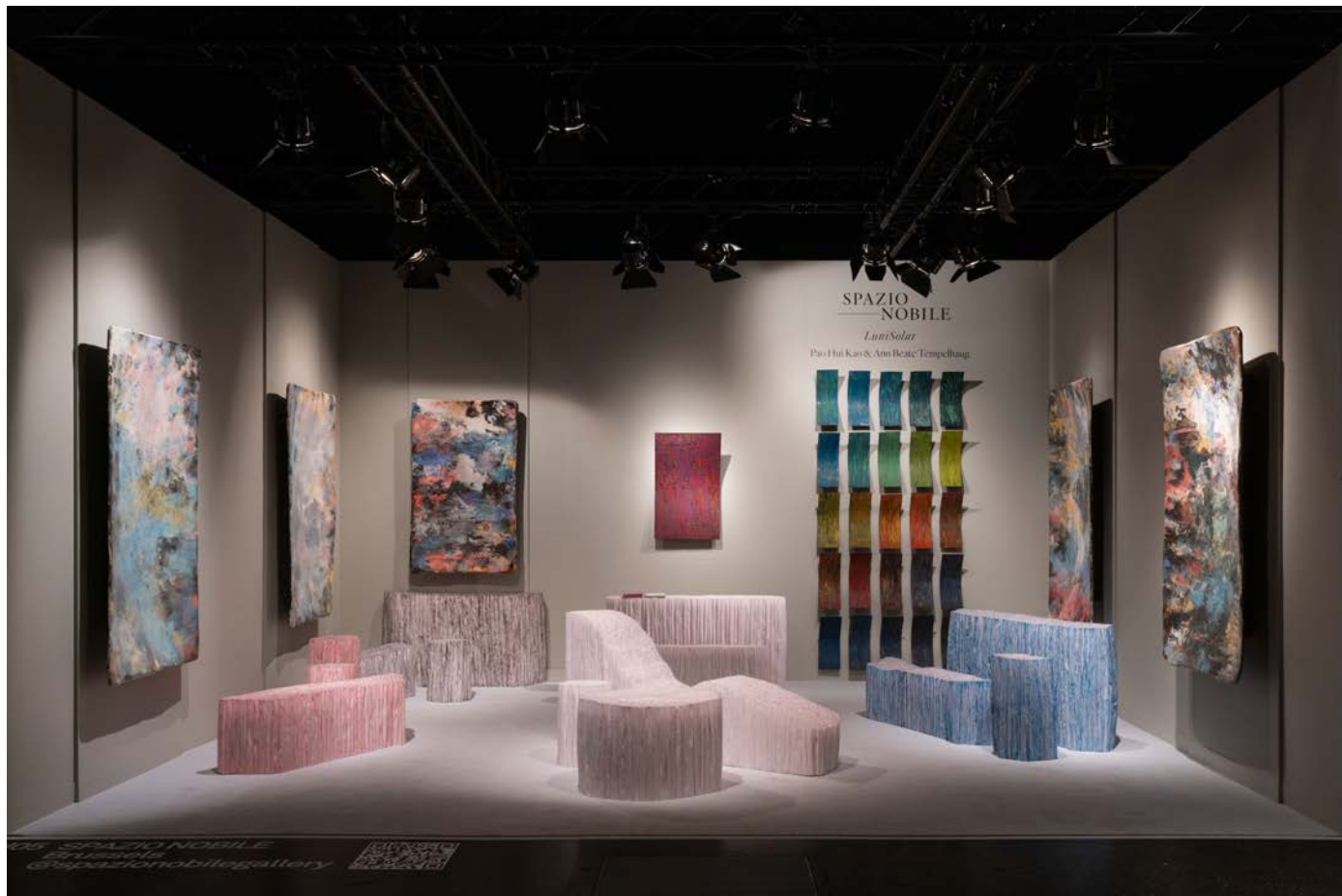












## *Oblivion (Glemsel)*

Ceramic wall installation

2023

Stoneware porcelain, glaze

144 x 88 x 17 cm

Unique piece signed by the artist on the back of the ceramic

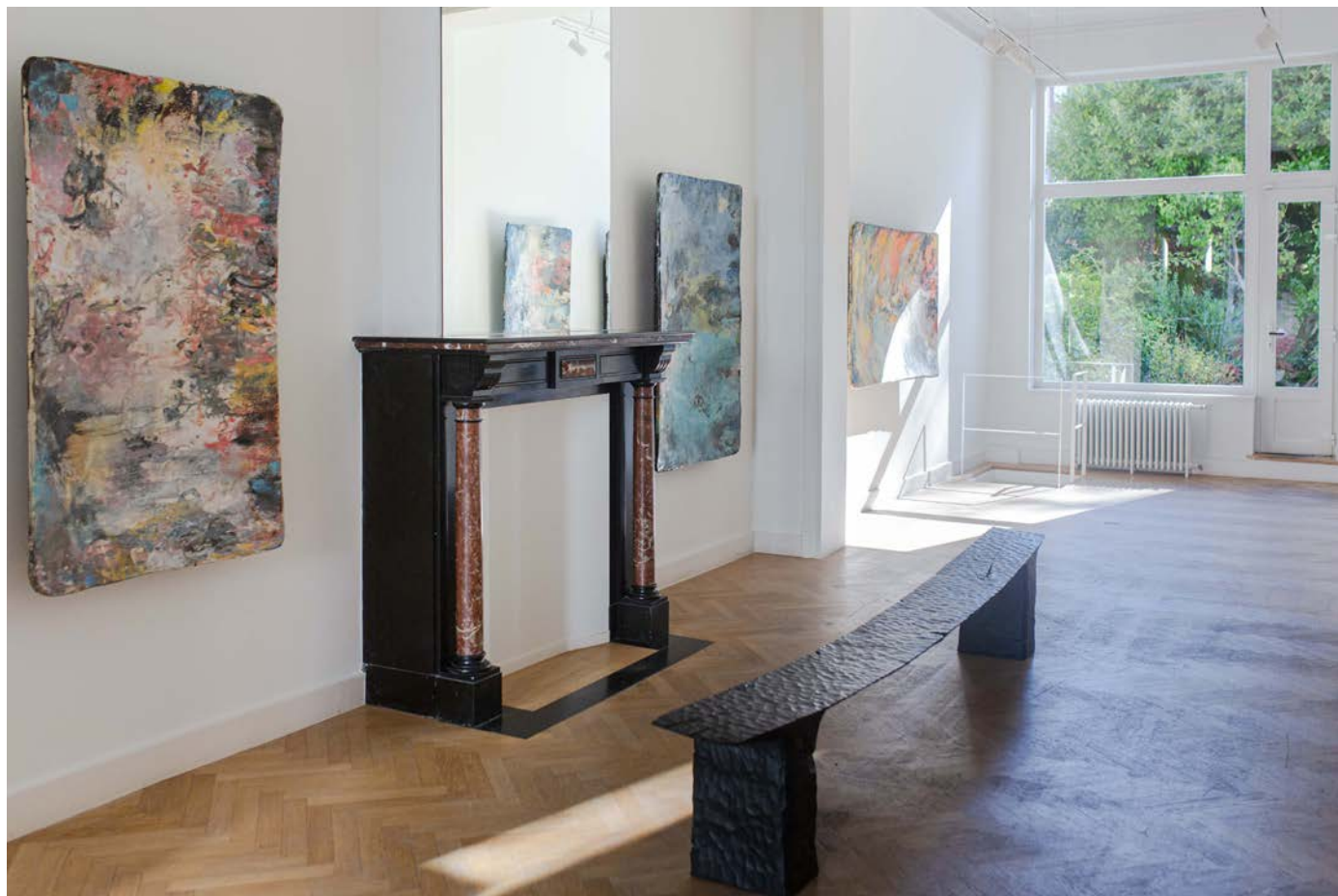


*Oblivion (Glemsel)* is another evocation of one of Ástor Piazzolla's masterpieces for bandoneon, piano and bass. This famous tango inhabits the walls of the studio and accompanies Tempelhaug's painting sessions. Self-forgetfulness and expectation are intertwined in this very free and rhythmic painting in which two figures can be discerned dancing under coloured spotlights.









## *Polar Light (Nordlys)*

Ceramic wall installation

2023

Stoneware porcelain, glaze

147 x 93 x 13 cm

Unique piece signed by the artist on the back of the ceramic

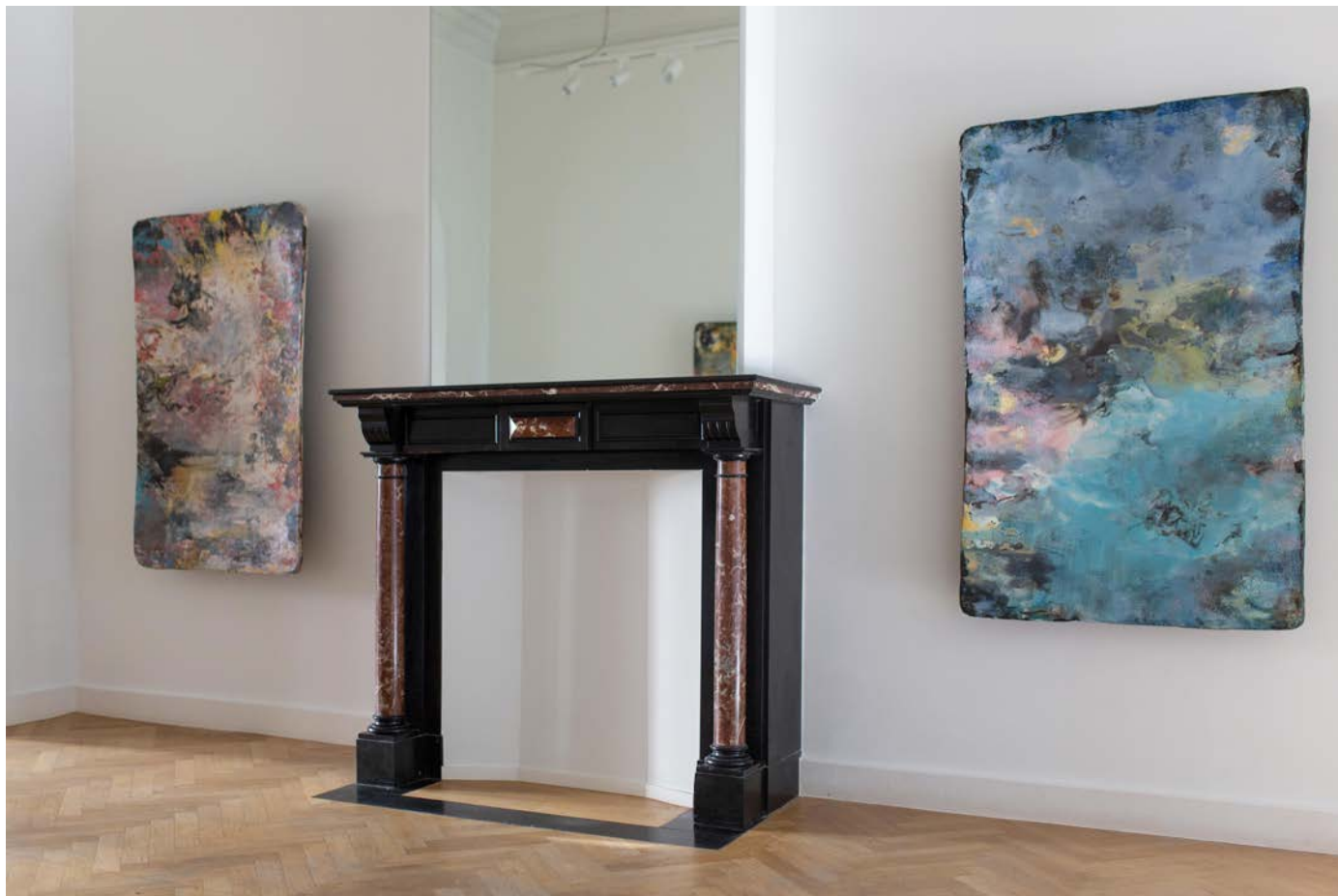




Polar Light (Nordlys) is a lyrical work that let the light dance at the heart of its composition. Blues in all their hues, from grey to almost translucence, predominate, illuminating skies flooded with Nordic light at different seasons of the year.











## *In Out*

2020

Wall hanging installation

Stoneware porcelain, glaze

90 x 60 x 6 cm

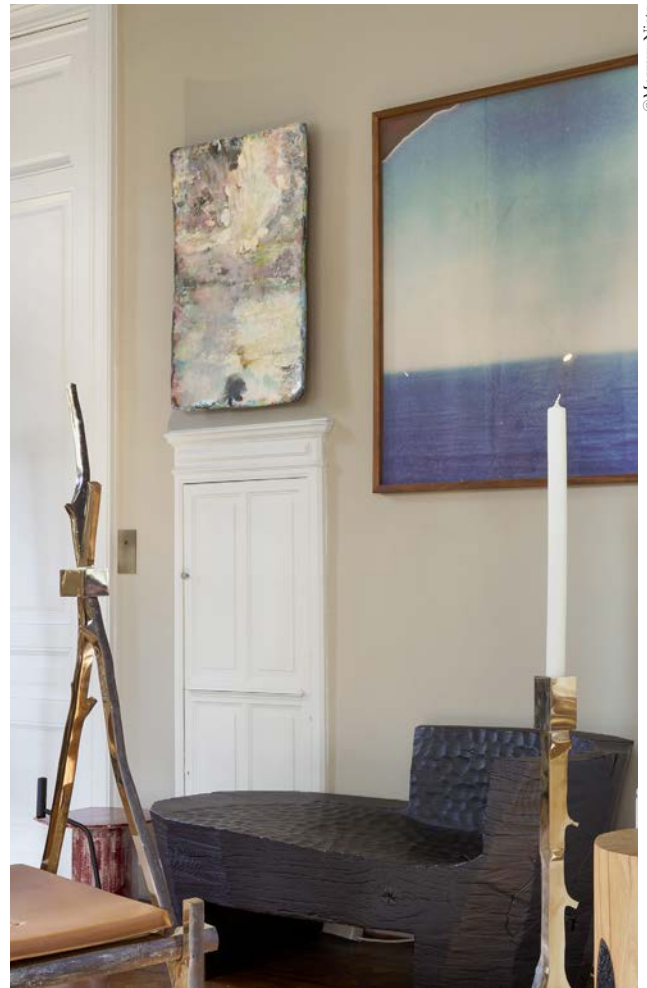
Unique piece signed by the artist on the back of the ceramic













*Save the date*

Season XXXIII- Eva Garcia  
*Taille douce*  
Solo Show  
14.3-18.5.2025

PAD Paris  
Les Tuileries  
Beaux rivages, Group Show  
2-6.4.2025

The Rooms Art Fair  
La Royale Belge au Mix, Brussels  
Group Show  
22-25.5.2025

Season XXXIV-Bela Silva  
*Africa*  
Solo Show  
21.5-7.9.2025

Summer Escape  
Frederik Vercruysse, Solo Show  
Panorama, 15 years of art photography  
Summer 2025 during Knokke Art Week

Season XXXV- Kiki van Eijk & Joost van  
Bleiswijk *Kiki and Joost*  
Duo Show  
4.9-16.11.2025  
Curated by Maria Cristina Didero

*Contact*

Spazio Nobile  
Contemporary Applied Arts,  
Design & Photography

Rue Franz Merjay, 142 & 169,  
1050 Brussels, Belgium  
+32 2 768 25 10  
www.spazionobile.com

Ma - sa / di - za / 'Tue - Sat,  
11.00-18.00  
& sur rendez-vous /  
op afspraak / by appointment

Lise Coirier,  
+32 475 53 19 88,  
lc@spazionobile.com

Gian Giuseppe Simeone,  
+32 477 27 29 04,  
ggs@spazionobile.com

Eugénie Frémot,  
+32 477 73 37 58,  
eugenie@spazionobile.com





Spazio Nobile is a contemporary art and design gallery in Brussels, Belgium, known for its bold exhibitions and commitment to promoting innovative, boundary-pushing work. The gallery presents a range of emerging and established artists and designers from around the world, providing a platform for experimental practices and new creative directions in both fine art and collectable design. When art historians Lise Coirier and Gian Giuseppe Simeone founded Spazio Nobile in 2016, they combined their passions for design and art history to establish a fruitful dialogue with applied art, design and photography. Without boundaries between disciplines, they have created a collection of unique art and design pieces, limited editions and installations, with a particular sensitivity to nature and minerality. The gallery also publishes *TLmag: True Living of Art & Design*, launched in 2008, an annual international print and online magazine dedicated to curating and capturing the culture of collecting. *TLmag* has evolved over 15 years with creative influencers, collectors, curators, artists, designers and architects who have shaped the contemporary art and design scene. The magazine and artist monographs are published by *Spazio Nobile Editions*. *Spazio Nobile Studiolo*, a permanent showcase in front of the main gallery, has been curated by the gallery since 2020. The co-founders have also extended the gallery experience to their private villa in Tervuren, on the outskirts of Brussels, with *Spazio Nobile At Home*, and in Sweden, at *The 25 Columns*, built by OFFICE Kersten Geers David Van Severen, overlooking Lake Siljan from the heights of Plintsberg, Dalarna.

@spazionobilegallery  
#spazionobile

SPAZIO  
— NOBILE

Contemporary Applied Arts, Design & Photography