



---

Ceramic Brussels

22-26.1.2025

Booth B14

Päivi Rintaniemi & Ann Beate Tempelhaug

*Chrysalis,*

Duo Exhibition

For the second edition of Ceramic Brussels, Spazio Nobile is bringing together two leading Nordic ceramic artists, Päivi Rintaniemi (Finland) and Ann Beate Tempelhaug (Norway), whose sculptural installations highlight inner landscapes and the fragility of the soul in a lyrical and sensitive gesture

---

SPAZIO  
NOBILE

*Contemporary Applied Arts, Design & Photography*

ceramic  
brussels



---

## Päivi Rintaniemi (FI)

Ceramicist Artist

Päivi Rintaniemi was born in Seinäjoki, Finland, in 1956. She graduated as Master of Arts from the Helsinki University of Art and Design, today known as the Aalto University. The varied art disciplines at university gave her solid professional skills for both design and sculpture. Rintaniemi's starting point for structuring her works of art are shape and dimension. Her works are characterized by her manner of processing clay, which is also often an important factor in the nature and narrative of her sculptures. Rintaniemi's artistic work is meditative and there is an interaction between the material and the themes of the artworks. Rintaniemi is interested in how people function, their relationship with existence and life, moods, reactions. Through her work, Rintaniemi wants to unveil her relationship with nature, and to let her audience appreciate the uniqueness and miracles of life. She wants to bring forth the great importance of the little things in life, and everyone's need to be heard and accepted. An alliance of power and fragility is central in Rintaniemi's large and visually delicate sculptures, and it is also the very effect that often

first draws the watchers' attention. Opposites and counterforces, their relations and interaction, are a way for the artist to speak out and to process the chaos in both the society and the individual. Humor also forms part of her attitude towards the world. Päivi Rintaniemi's work has been recognized both nationally and abroad. She received the Finnish State Designer Award in 2008, and the first prize - the 58 Premio Faenza - at the International Competition of Contemporary Ceramic Art in Faenza, Italy, in 2013. Spazio Nobile represents her since 2019.











## *Duo X*

Sculpture  
2023  
Stoneware clay with shamott  
96 x 69 x 42 cm  
Unique piece signed by the artist





# *Domina X*

Sculpture

2023

Stoneware clay with shamott

96 x 64 x 59 cm

Unique piece signed by the artist



ceramic  
brussels







# *Cambiato*

Sculpture

2024

Stoneware clay with shamott

55 x 51 x 68 cm

Unique piece signed by the artist



©Sofia Rintaniemi







# *Silex*

Sculpture

2024

Stoneware clay with shamott

24x 22 x 23 cm

Unique piece signed by the artist



ceramic  
brussels







# *Augmentum*

Sculpture

2024

Stoneware clay with shamott

97 x 62 x 41 cm

Unique piece signed by the artist









# *Thesaurus*

Sculpture

2019

Stoneware clay with shamott

38 x 90 x 80 cm

Unique piece signed by the artist



© Sofia Rintaniemi





# *Ara*

Sculpture

2020

Stoneware clay with shamott

38 x 87 x 72 cm

Unique piece signed by the artist



©Sofia Rintaniemi





# *Adspectum*

Sculpture

2019

Stoneware clay with shamott

33 x 54 x 59 cm

Unique piece signed by the artist



©Sofia Rintaniemi



# *Confido*

Sculpture

2010

Stoneware clay with shamott

38 x 87 x 72 cm

Unique piece signed by the artist



©Sofia Rintaniemi





# *Unio*

Sculpture

2010

Stoneware clay with shamott

54 x 60 x 56 cm

Unique piece signed by the artist









**Ann Beate Tempelhaug (NO)**  
Ceramicist Artist

---

Ann Beate Tempelhaug was born in Mosjøen, in northern Norway. Educated in the Arts and Crafts at the University of Bergen. Her work is collected by the National Museum Oslo, and the Art museums in Bergen, Trondheim and Kristiansand. Among her recent solo exhibitions are KRAFT Gallery Bergen, Bo muldsfabriken Arendal, Agder Art Center and Arteriet Gallery in Kristiansand. Among the recent group exhibitions are the Art Fairs Collective New York and Collect London. Awarded commissions at the Universities of Kristiansand and Bergen. She has received several national grants, most recently the National Art Grant for 5 years. As the Danish artist Per Kirkeby once said: “Landscapes are always about beauty and death.” “By taking the landscape as inspiration, my work connects to my own life and my memories,” she states. Taking things one day at a time, Norwegian ceramic artist Ann Beate Tempelhaug has been creating large scale ceramic objects for over thirty years. Her freely shaped and sculpted ceramic objects are painted completely

by hand, on both their surface and borders, a testament to her curiosity and dedication to finding beauty in everyday colours and shapes. In her creative process, Tempelhaug proposes new ways of understanding how even the smallest transient moments can affect our larger context. Spazio Nobile presented her first solo show *Nord* at the gallery in 2023 and is collaborating on her first solo exhibition with Fondazione Officine Saffi in Milan in Spring 2025. Tempelhaug's works are collected by the National Museum of Oslo and the art museums of Bergen, Trondheim and Kristiansand. They are also part of major private collections in Europe and around the world. Spazio Nobile represents her since 2020.









## *Whisper Your Name (Hviske ditt navn)*

Ceramic wall installation

2024

Stoneware porcelain, glaze

183 x 112 x 17 cm

Unique piece signed by the artist on the back of the ceramic



ceramic  
brussels











# *As The Days Come (Slik dagen kommer)*

Ceramic wall installation

2024

Stoneware porcelain, glaze

144 x 91 x 14 cm

Unique piece signed by the artist on the back of the ceramic



ceramic  
brussels











*Like days, nights, years (Som dager, netter, år)*

Ceramic wall installation

2024

Stoneware porcelain, glaze

185 x 113 x 18 cm

Unique piece signed by the artist on the back of the ceramic



ceramic  
bruss  
els











## *Diary (Diarium)*

Ceramic wall installation

2024

Stoneware porcelain, glaze

145 x 90 x 15 cm

Unique piece signed by the artist on the back of the ceramic



ceramic  
brussels











## *Within Everyhting (Innenfor alt)*

Ceramic wall installation

2024

Stoneware porcelain, glaze

183 x 110 x 16 cm

Unique piece signed by the artist on the back of the ceramic











## *Mirage (Luftspeiling)*

Ceramic wall installation

2023

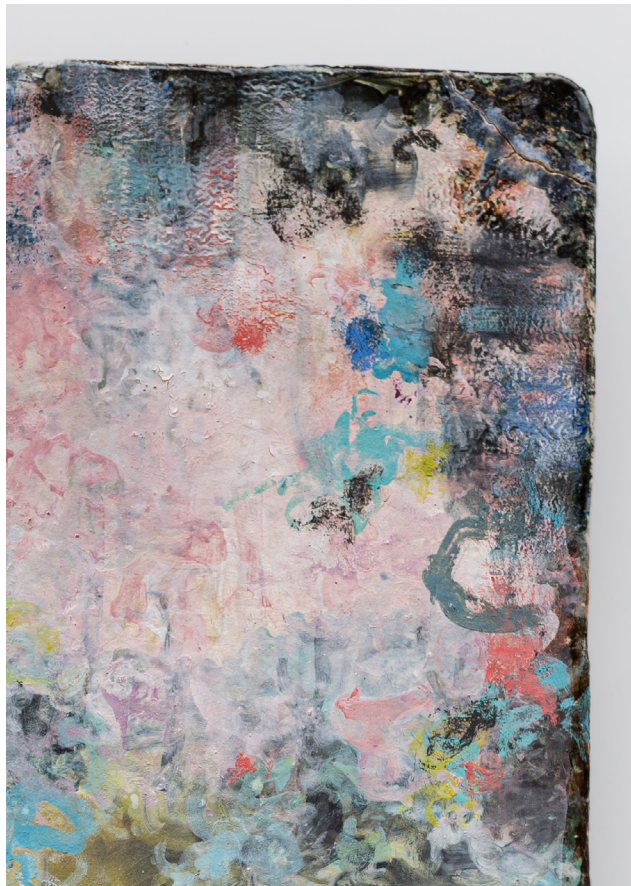
Stoneware porcelain, glaze

182 x 111 x 15 cm

Unique piece signed by the artist on the back of the ceramic



*Mirage (Luftspeiling)* evokes the celestial light that passes through the clouds, an atmospheric phenomenon in which warm air is less dense than cold air, letting through beams of light that create a fairy-tale effect in the sky and in the eyes. Like *trompe-l'œil* or an optical illusion, the mirage lets an image appear as if in a mirror. Tempelhaug's palette is soft and rich in pastel tones, akin to the refraction of light in a rainbow.









## *Twilight (Skumring)*

Ceramic wall installation

2023

Stoneware porcelain, glaze

182 x 111 x 15 cm

Unique piece signed by the artist on the back of the ceramic



*Twilight (Skumring)* describes the blue hour, an in-between light, an aurora or a crepuscule that can translate the painter's feelings about herself and the landscape that surrounds her, whether present or imaginary. The shadows are pinkish and bluish, projected like furtive states of mind, sudden incarnations of a passing presence or angel.









## *Ouvert*

Ceramic wall installation

2020

Stoneware porcelain, glaze

184 x 112 x 16 cm

Unique piece signed by the artist on the back of the ceramic









## *Reflection*

Ceramic wall installation

2020

Stoneware porcelain, glaze

184 x 112 x 16 cm

Unique piece signed by the artist on the back of the ceramic







## *Input - Output (Inngang - Utgang)*

Ceramic wall installation

2024

Stoneware porcelain, glaze

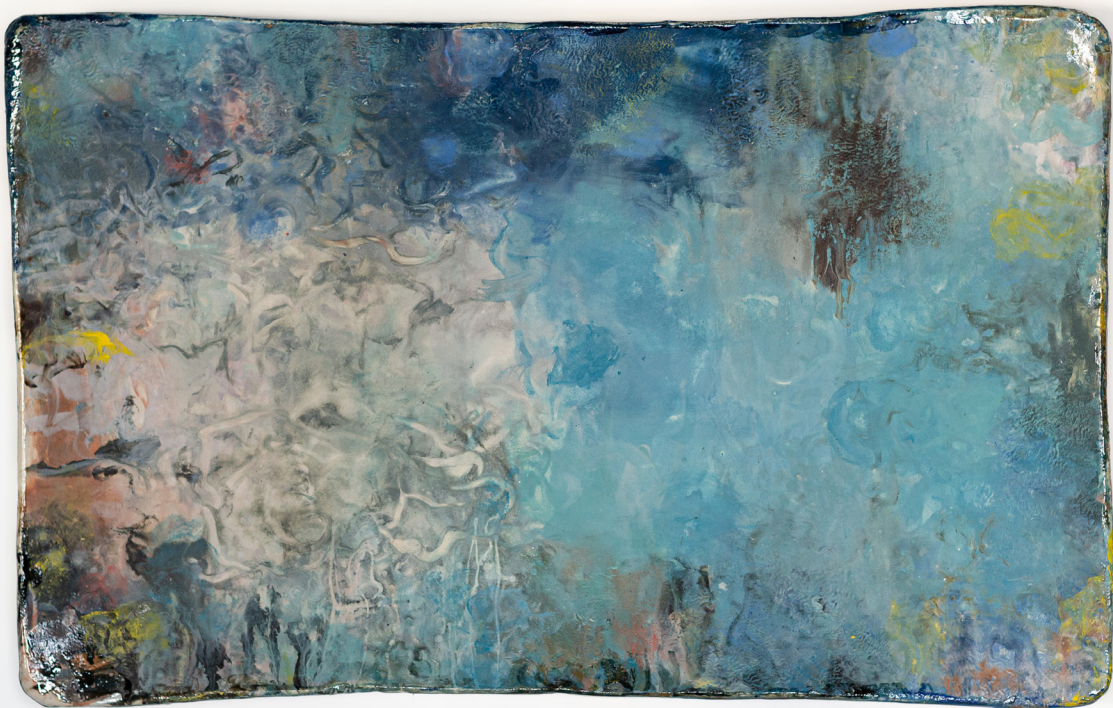
142 x 91 x 16 cm

Unique piece signed by the artist on the back of the ceramic











## *Light Above The Sea (Lys over havet)*

Ceramic wall installation

2024

Stoneware porcelain, glaze

145 x 88 x 16 cm

Unique piece signed by the artist on the back of the ceramic









## *Beyond (Bortenfor)*

Ceramic wall installation

2023

Stoneware porcelain, glaze

144 x 88 x 17 cm

Unique piece signed by the artist on the back of the ceramic





*Beyond (Bortenfor)* is a darker, more hushed work than *Oblivion*. The artist inscribes her colours as if in a diary. They are writings and traces of memories that cannot be forgotten. Density is very present, with veils of whiteness covering large hidden areas of interior landscapes that reappear as the composition progresses and time passes. An otherworldly energy emanates from them, piercing through the layer of cloudy vapour.







## *Prelude (Forspill)*

Ceramic wall installation

2023

Stoneware porcelain, glaze

143 x 90 x 13 cm

Unique piece signed by the artist on the back of the ceramic



*Prelude (Forspill)* is like a musical composition open to visual tactility and contemplation. This ode to light in its varying intensities is interspersed with subtle touches of colour that make this work very painterly yet delicately abstract. It is undoubtedly one of the most rhythmic free forms in the exhibition.







## *Oblivion (Glemsel)*

Ceramic wall installation

2023

Stoneware porcelain, glaze

144 x 88 x 17 cm

Unique piece signed by the artist on the back of the ceramic





*Oblivion (Glemsel)* is another evocation of one of Ástor Piazzolla's masterpieces for bandoneon, piano and bass. This famous tango inhabits the walls of the studio and accompanies Tempelhaug's painting sessions. Self-forgetfulness and expectation are intertwined in this very free and rhythmic painting in which two figures can be discerned dancing under coloured spotlights.







## *Polar Light (Nordlys)*

Ceramic wall installation

2023

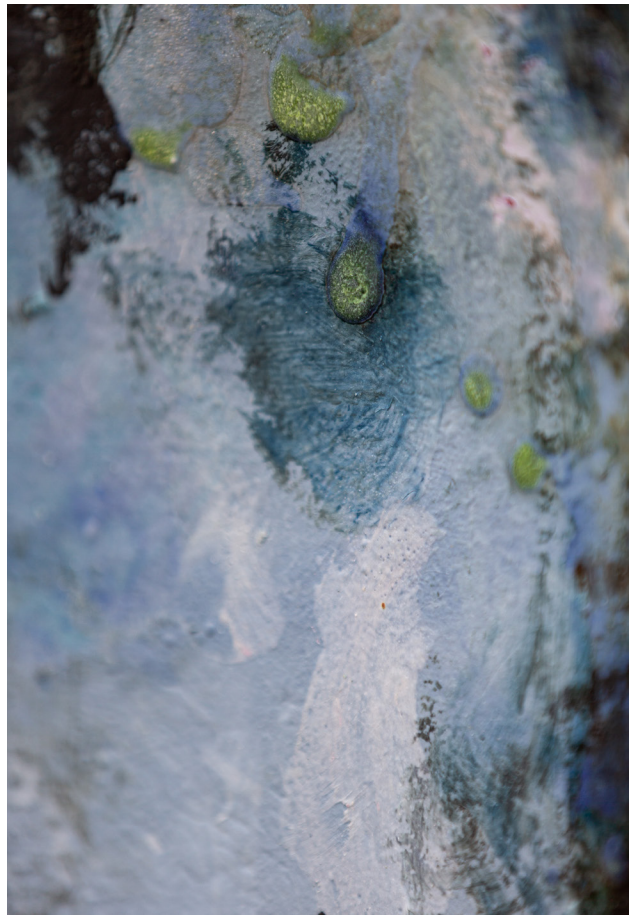
Stoneware porcelain, glaze

147 x 93 x 13 cm

Unique piece signed by the artist on the back of the ceramic



Polar Light (Nordlys) is a lyrical work that let the light dance at the heart of its composition. Blues in all their hues, from grey to almost translucence, predominate, illuminating skies flooded with Nordic light at different seasons of the year.









### Lise Coirier (FR-BE)

Art Historian, Art Curator and Publisher,  
Co-founder of Spazio Nobile

---

With degrees in management and art history, French-born Lise Coirier has lived and worked in Brussels for 30 years. There, she has run her consulting agency Pro Materia for 20 years, and remains committed to managing projects that she creates from the start. She is Founder and Editor-in-Chief of *TL Magazine True Living of Art & Design*, started in 2008, a bilingual (FR/EN) yearly magazine available in print and online, and dedicated to culture, art and contemporary design. Lise Coirier has also initiated several European projects, such as Human Cities and Glass is Tomorrow. An exhibition curator, she is also the author of several books, including “*Le Guide des Métiers d’art à Bruxelles et environs*” (ed. Best of Publishing / Fondation pour les arts, 1998 - 2000), “*Design in Belgium - 1945-2000*” (ed. Racine, 2002),

*Design.be, Belgium is Design* (ed. Stichting Kunstboek, 2015 - 2010), monographs of Xavier Lust (ed. Stichting Kunstboek, 2008) and Anne Derasse (ed. Betaplus, 2014), *Glass is Tomorrow* (ed. Pro Materia / Archibooks, 2015), and more. In 2016, she opened Spazio Nobile Gallery in Brussels, with her partner and husband Gian Giuseppe Simeone, specialised in contemporary applied arts, design and photography.





## Gian Giuseppe Simeone (IT-SE)

Art Historian & Archæologist,  
Co-Founder of Spazio Nobile

---

Gian Giuseppe Simeone is an art historian and archaeologist specialised in the preservation and valorisation of cultural and artistic heritage. Italo-Swedish, based in Brussels since 1979, he works as a consultant on cooperation projects and programmes in the fields of contemporary creation and cultural heritage for the European Commission and other national and international organisations. His consulting firm Culture Lab, launched in 2002, focusses on the design and management of international cooperation projects and programmes in the field of culture, primarily supported by the European Union. Within this context, he has contributed to the implementation of major exhibitions, research programmes and co-productions ventures in disciplines including heritage, music, theatre, the visual arts and design. He has also carried out several

study, assessment and consulting missions in Europe, Africa and the Mediterranean, with the goal of highlighting the importance of culture in the policies of the European Union, and its role in socio-economic development. Gian Giuseppe Simeone is author of several reference works on the study and recognition of the value of European and international culture and heritage. In 2016, he co-founded the Spazio Nobile gallery with Lise Coirier.

# Pao Hui Kao & Ann Beate Tempelhaug's Monographs edited by *Spazio Nobile Editions*





# TLmag 40-*The Ideal Home* Guest Editor : Chris Dercon



Chris Dercon, General Director, Fondation Cartier pour l'art contemporain

©Thibaut Voisin



*Info*

Ceramic Brussels 2025

22-26.1.2025

Booth B14

Päivi Rintaniemi & Ann Beate Tempelhaug

*Chrysalis*,

Duo Exhibition

Collectors Preview

22.1.2025, 3-10pm

By invitation only

Public Opening

23-26.1.2025, 11 am-7pm

Tour & Taxis

Sheds 1 & 2

Rue Picard 3

1000 Brussels, Belgium

Works on the cover : *Duo X* by Päivi Rintaniemi and

*Whisper your name* by Ann Beate Tempelhaug

Catalogue Design by Eugénie Frémiot



*Save the date*

Spazio Nobile Gallery

Season XXXII - Vincent Fournier

*Flora Incognita*, Solo Show

In the framework of Photo Brussels Festival

23.1-2.3.2025

Spazio Nobile At Home

Tervuren

*Golden Hive*, Group Show

Until 16.3.2025 & by appointment

NOMAD St Moritz

Klinik Gut

*Shining Peaks*, Group Show

20-23.2.2025

Season XXXIII - Éva Garcia

*Taille Douce*

Solo Show

14.3-18.5.2025

PAD Paris

Les Tuileries

Group Show

2-6.4.2025

Season XXXI - Bela Silva

*Africa*

Solo Show

21.5-7.9.2025

*Contact*

Spazio Nobile

Contemporary Applied Arts,  
Design & Photography

Rue Franz Merjay, 142 & 169,  
1050 Brussels, Belgium

+32 2 768 25 10

www.spazionobile.com

Ma - sa / di - za / Tue - Sat,  
11.00-18.00

& sur rendez-vous /  
op afspraak / by appointment

Lise Coirier,  
+32 475 53 19 88,  
lc@spazionobile.com

Gian Giuseppe Simeone,  
+32 477 27 29 04,  
ggs@spazionobile.com

Eugénie Frémiot,  
+32 477 73 37 58,  
eugenie@spazionobile.com





When art historians Lise Coirier and Gian Giuseppe Simeone opened Spazio Nobile in 2016 in the lively and cosmopolitan Brugmann district of Brussels, Belgium, they combined their passions for design and art history, establishing a committed dialogue between contemporary applied arts, design and photography, with no boundaries between disciplines, the visual arts in dialogue with the fine arts. They have created a collection of unique pieces, limited editions and installations that are both experimental and artistic, with a particular sensitivity to all things related to nature and minerality. The gallery represents around thirty emerging and internationally renowned artists and designers, promoting craftsmanship and excellence in a dialogue between Eastern and Western cultures. Each year, Spazio Nobile organises up to five exhibitions and events in art and heritage sites such as Maison Louis Carré, Yvelines, France (arch. Alvar Aalto), Ancienne Nonciature, Grand Sablon, Brussels... Spazio Nobile also participates in local and international fairs such as PAD Paris and PAD London, Design Miami/Basel and Design Miami/Paris, NOMAD Saint Moritz, Ceramic Brussels, Salon Art + Design New York, Unique Design Shanghai... Spazio Nobile also publishes *TLmag-True Living of Art & Design* (©2008-), an annual international print and online magazine dedicated to curating and capturing the culture of collecting, as well as artist monographs with Spazio Nobile Editions. In 2020 Spazio Nobile opened Spazio Nobile Studiolo, a permanent showcase in front of the main gallery. The founders have also extended the gallery experience to their private villa in Tervuren, on the outskirts of Brussels, with *Spazio Nobile At Home*.

SPAZIO  
NOBILE

Contemporary Applied Arts, Design & Photography

@spazionobilegallery  
www.spazionobile.com  
@tlmag  
www.tlmagazine.com