



---

Salon Art + Design 2023 New York

Park Avenue Armory, booth A7

9-13.11.2023

*Pleiades*, Group Exhibition

Foyer Brisé, Garnier & Linker, Ernst Gamperl,  
Kaspar Hamacher, Pao Hui Kao, Katherine Huskie,  
Jin Kuramoto, Isaac Monté, Päivi Rintaniemi, Bela Silva,  
Piet Stockmans, Jacqueline Surdell,  
Ann Beate Tempelhaug, Kiki van Eijk,  
Fabian von Spreckelsen, Philipp Weber

SPAZIO  
— NOBILE

*Contemporary Applied Arts, Design & Photography*

Salon | ART +  
DESIGN

# *Pleiades*

For its inaugural edition at the Salon Art + Design in New York, Spazio Nobile, co-founded by French art historians, writers and curators Lise Coirier and Italo-Swedish Gian Giuseppe Simeone, presents “*Pleiades*” on booth A7, a group exhibition featuring 16 selected artists and designers from the gallery.

The Pleiades, also known as the Seven Sisters, are a cosmic constellation that has long fascinated the human imagination and served as an endless source of inspiration in art, design, and literature. These seven brilliant stars have been a celestial muse for countless artists and creators throughout history. Spazio Nobile explores the profound influence of the Pleiades on the creative world, inspiring artists to investigate themes of unity, femininity, and holistic connection. These seven stars, bound by gravity and mythology, symbolize the power of collective creativity, bringing artists together in a shared quest for inspiration.

Design has also been touched by the allure of the Pleiades. The delicate arrangement of these celestial bodies in the night sky has influenced the composition of furniture, lighting, and architectural elements. The interplay of light and shadow inspired by the Pleiades has found its way into contemporary design, creating spaces that evoke a sense of wonder.

Literature has woven the Pleiades into the fabric of storytelling for centuries. From ancient Greek myths to modern science fiction, the seven sisters have been a recurring motif, representing everything from sisterhood and love to exploration and discovery. At the Salon Art + Design in New York, Spazio Nobile unveils the multifaceted influence of the Pleiades through art and design. “La Pléiade” in French literature is also poetic and symbolic. Just as the Pleiades are a constellation of seven bright stars, “La Pléiade” was a group of seven influential French poets who aimed to rejuvenate French poetry during the Renaissance, much like how Spazio Nobile positions itself as a “genius loci” to revive the energy flow in the field of contemporary applied arts at the intersection with fine art.

This innovative and lyrical poetry is intertwined in the unique works of artists and designers of the gallery: Piet Stockmans, Wilde Strippen, porcelain and Stockmansblauw — Ann Beate Tempelhaug, North, stoneware porcelain mural — Foyer Brisé, Echo, porcelain and mixed media — Päivi Rintaniemi, Calix, stoneware sculpture with shamott — Garnier & Linker, Diatomée sculpture vases, molten glass — Katherine Huskie, Echinus and Ostreum, hand blown and squeezed molten glass sculptural vases — Jacqueline Surdell, narrative rope tapestries, cotton and nylon — Bela Silva, gouaches on paper and hand-built glazed sculpture — Kiki van Eijk, Civilized Primitives Daybed and Mirror, polished and patinated bronze — Fabian von Spreckelsen, Comfort, leather cabinet in eroded metal — Ernst Gamperl, turned wood vessels, iron oxides or bleached — Kaspar Hamacher, Max, monoxyle chairs in burnt oak — Jin Kuramoto, iconic Bamboo Chair part of A New Layer Taiwan collection — Pao Hui Kao, floating Red and Black Urushi Paper Pleats collectible furniture and the Red Urushi Lacquer Leaf with Kintsugi — Philipp Weber, Celadon Filigree light pendants — Isaac Monté, Crystallized sculpture vessel.

Lise Coirier, November 2023.





---

## Foyer Brisé (NL)

Artists, Designers

Established in 2022, 'Foyer Brisé' is a continuation of the autonomous designs of two anonymous designers. After working as a duo for fifteen years, they will continue the study on high-crafts in downfall under the name of 'Foyer Brisé'. 'Foyer Brisé' uses brokenness as a point of departure in their work. Worthless and faulty at first glance, the labor-intensive pieces of 'Foyer Brisé' are delicate collages of personal and shared experiences as seen from the perspective of their creator. Launched during Collectible Design Fair in May 2022, Foyer Brisé presents objects that are between remains of what they were (or refer to) and a dream of what they can become. They carry a mix of design and art references (history of Chinese porcelain, Hella Jongerius, Martin Margiela i.c.w. Inge Grognard, Dries van Noten, etc) and private memories, captured in high crafts, Borgerhout aesthetics and broken litter. They have a mix of glazes and underglazes,

nail polish, white gold leaf, isolation blanket, colour pencils, concrete mineral paint and even Mon Chéri packaging. Each carafe has the title, number, date and time of creation that Foyer Brisé has written on it. Foyer Brisé is represented by Spazio Nobile since 2022.



## *Echo*

#9

Sculptural vessel

2022

Mixed media on porcelain

27 x 16 x 16 cm / 10,62 x 6,29 x 6,29 in

Edition 9/20 +2 AP

Numbered and signed by the artist



The creations of Foyer Brisé are delicate collages of personal and shared experiences, seen from the point of view of their creator. *Echo*, a new series of unique pieces in a random edition for Spazio Nobile, lies between the remnants of what they were or what they refer to... and the dream of what they could become. These porcelain vessels contain a mix and match of art and design references (history of Chinese porcelain, Hella Jongerius, Martin Margiela i.c.w. Inge Grognaard, Dries van Noten, etc.) and private memories, captured in the craftsmanship, Borgerhout aesthetic and salvage of broken pieces. There is layers of enamels and under-glazes, nail varnish, silver leaf, insulation blankets, coloured pencils, mineral paint...



## *Echo*

#13

Sculptural vessel

2023

Mixed media on porcelain

27 x 16 x 16 cm / 10,62 x 6,29 x 6,29 in

Edition 13/20 +2 AP

Numbered and signed by the artist



## *Echo*

#14

Sculptural vessel

2023

Mixed media on porcelain

27 x 16 x 16 cm / 10,62 x 6,29 x 6,29 in

Edition 14/20 +2 AP

Numbered and signed by the artist





---

## Garnier & Linker (FR)

Artists, Designers

Guillaume Garnier and Florent Linker are two French creators based in Paris. They aim at giving a contemporary design to rare materials and savoir-faire. All pieces are handmade unique or limited editions by French master craftsmen. As designers, they get their inspiration from decorative arts and sculpture, to create pure-shaped forms revealing their materiality. With their background in interior design, they conceive functional objects that meet contemporary interiors of enlightened collectors who seek art and design collectibles with a soul. They have created two singular collections for Spazio Nobile in Brussels, one is the “*Parisís*” lamps in plaster and alabaster and, another one is the molten glass *Diatomé* Sculpted Vases which appear like diatoms that are single-celled algae that live in houses made of glass. Inspired by these light-absorbing molecules which are the only organism

on the planet with cell walls composed of transparent, opaline silica, they are ornamented by intricate and striking patterns of silica. On earth, diatoms are bringing us up to 50% of our oxygen and also feed the oceans, lakes and rivers. Spazio Nobile have experimented this fascinating lost-wax casting technique mastered by French glass maker Olivier Fonderflick with 20 crystal colors: light blue, light pink, light green, clear transparent, violine grey, purple, lime, citrin, cobalt, dark grey, nearly black and cognac/ amber. Artistic collaborations and projects with floral artists around *Diatomé* such as Ikebana master Jozef Prelis Seihō and Paris-based creator Arturo Arita have been established, respectively on Ikebana exhibition at Collectible in Spring 2019, *Call to the Wild* at Maison Louis Carr. (arch Alvar Aalto) in Summer 2020, at Spazio Nobile and Spazio Nobile At Home. Garnier & Linker are represented by Spazio Nobile since 2018.

*Diatomée* by the Parisian duo of interior architects, Garnier & Linker, is an exclusive edition by Spazio Nobile. *Diatomée* Sculpture Vases appear like diatoms that are single-celled algae living in houses made of glass. Inspired by these light-absorbing molecules which are the only organism on the planet with cell walls composed of transparent, opaline silica, they are ornamented by intricate and striking patterns of silica. On earth, diatoms are bringing us up to 50% of our oxygen and also feed the oceans, lakes and rivers. Since 2020, Spazio Nobile has initiated artistic collaborations and projects around *Diatomée* with floral and ikebana artists.

When the kiln is brought up to temperature (800 degrees Celsius /1450-1530 degrees Fahrenheit), the glass chunks melt and flow down into the mold. The lost wax process is very old and derives from a process for shaping bronze. The original shape is moulded in foundry wax, then covered with clay which becomes an external mould. When everything is annealed, the mould hardens and the wax, by melting, is eliminated through a conical dripping hole made in the covering. The space left free by the 'lost' wax is filled in with molten glass, which assume the form of the wax mould. The wax can even be eliminated by evaporation.





## *Diatomée Pink*

Sculptural vase

2018 - 2023

Lost-wax molten glass

28 x 10 x 10 cm / 11,02 x 3,9 x 3,9 in

Edition 20 + 2 AP

Unique piece in a random collection for Spazio Nobile

Numbered and signed by the artists



## *Diatomée Sea Green*

Sculptural vase

2018 - 2023

Lost-wax molten glass

28 x 10 x 10 cm / 11,02 x 3,9 x 3,9 in

Edition 20 + 2 AP

Unique piece in a random collection for Spazio Nobile

Numbered and signed by the artists



## *Diatomée Sky Blue*

Sculptural vase

2018 - 2023

Lost-wax molten glass

28 x 10 x 10 cm / 11,02 x 3,9 x 3,9 in

Edition 20 + 2 AP

Unique piece in a random collection for Spazio Nobile

Numbered and signed by the artists





## *Diatomée Cobalt*

Sculptural vase

2018 - 2023

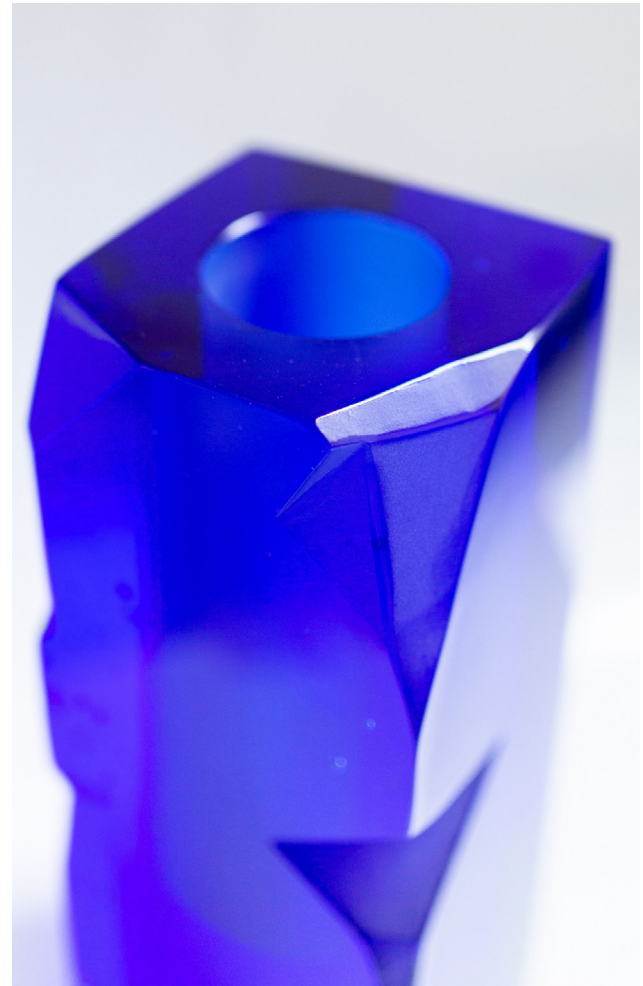
Lost-wax molten glass

28 x 10 x 10 cm / 11,02 x 3,9 x 3,9 in

Edition 20 + 2 AP

Unique piece in a random collection for Spazio Nobile

Numbered and signed by the artists



## *Diatomée Nearly Black*

Sculptural vase

2018 - 2023

Lost-wax molten glass

28 x 10 x 10 cm / 11,02 x 3,9 x 3,9 in

Edition 20 + 2 AP

Unique piece in a random collection for Spazio Nobile

Numbered and signed by the artists





---

## Ernst Gamperl (DE)

Sculptor

His sculptures aren't simply turned on the lathe, they're the fruit of years of painstaking work with his preferred medium: wood. Over the past 20 years, Ernst Gamperl has studied its drying properties and their impact on the sculpture. He knows it is a give-and-take, a dialogue with the material; he can never impose a shape on it. This physical and conceptual challenge continues to spur him on. Curved edges and bulges, projections and indentations emerge out of the natural warping of the wood. They are part and parcel of the design, as are branches and irregular growth formations, and the fissures and fractures that he consciously repairs and controls. The immanent expressive power of the material and its grain, lines and colouring, its softness or hardness, its compact heaviness or paper-thin transparency, are underscored by his treatment of the surfaces: waxing and polishing, scrubbing out the streaks or carving filigree parallel grooves, contrasting smooth and shiny with rough-hewn and scarred. Pushing the boundaries of his own craftsmanship,

Gamperl was awarded the LOEWE Craft Prize in 2017, and since then has pursued a quest for even more essential and archaic forms and surfaces. His one-of-a-kind project, "Tree of Life", in which he transformed a tree into 67 beautifully wrought vessels that embody his excellence in woodturning and in experimental patinas, has been touring in Europe and in Asia (Korea) over the past two years. Spazio Nobile has represented Ernst Gamperl since 2020.



*12/2020//170*

2020

Turned maple, limed and bleached

97 x 37 x 37 cm / 38,18 x 14,56 x 14,56 in

Signed and dated by the artist





*13/2020//170*

2020

Turned maple, limed and bleached

70 x 30 x 30 cm / 27,55 x 11,81 in

Signed and dated by the artist



75/2022//180

2022

Turned oak wood and butterfly keys

81 x 43 x 37 cm / 31,88 x 16,92 x 14,56 in

Unique piece

Signed and dated by the artist



II6/2022//200

2022

Turned ash wood and butterfly keys

113 x 40 x 47 cm / 44,48 x 15,74 x 18,5 in

Unique piece

Signed and dated by the artist





44/2022//300

2022

Turned oak wood and butterfly keys

68 x 63 x 47 cm / 18,5 x 24,75 x 26,75 in

Unique piece

Signed and dated by the artist

Houghton Oak Project

From the hundreds of years a tree has grown, to the process of preparing the wood and then turning the vessels, time takes on new meaning in the work of sculptor and master wood turner, Ernst Gamperl. For over 20-years, Gamperl has applied a rigorous process of repetition and detail that has given him a deep intuition and appreciation of wood and his craft. "There is a respect for the material and its history", he notes, about this unique experience of giving new life to this precious material.



53/2021//300

2021

Turned oak wood and butterfly keys

69 x 59 x 68 cm / 26,75 x 23,25 x 26,75 in

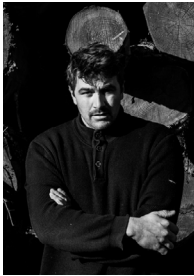
Unique piece

Signed and dated by the artist

Houghton Oak Project

This sense of history came full circle in the exhibition that was on view at Houghton Hall, an historic Palladian style property originally built in 1721 for Britain's first Prime Minister, Sir Robert Walpole, in Norfolk, UK. Titled, "Oak Vessels," Gamperl used wood from a 310-year old felled oak tree that was planted on the property the same year of its construction, and transformed it into 21 unique objects in various sizes and shapes.





---

## Kaspar Hamacher (BE)

Sculptor, Designer

With a degree from the Academie Beeldende Kunsten in Maastricht, the Netherlands, Kaspar Hamacher, originally from Belgium's Eastern Cantons, takes nature as the starting point in his daily life as a sculptor and a designer of artistic furniture. Monoxyle purity blooms from sylvan beauty. Raised in woodlands by his forest ranger father, he has forged a unique and very personal path through the world of art and design, winding his way between sculpture and the contemporary applied arts. Far from the rush of our digital world, Kaspar Hamacher creates a close and unique connection with each fragment of trunk he sculpts, crafting unique stamped pieces out of his own creative energy. He resolutely focuses on the object in all its physical strength, more as a *maker* than a conceptual designer. His abilities with

wood, as a living material, are the fruit of his energy and his imagination: whether working with a tree stump or a piece of leather, for him it is essential to respect authenticity at every step of the creative process. In his design approach, which he has called *Die Werkstatt* (The Workshop) since his 2017 exhibition at Spazio Nobile, Hamacher always aims to create a piece that is both unique and personal, with a strong meaning and added soul. "Le Sacre de la Matière" reflects his authenticity, while "*Mother Earth*" is at the heart of his identity, the eponymous title of his solo exhibition at CID Hornu in Belgium which ran from June to September 2021. Kaspar Hamacher is represented by Spazio Nobile since 2016.

## *Max Chair*

#4

Sculptural chair

2021

Fire sculpted solid oak waxed and oiled

50 x 50 x 85 cm / 19,68 x 19,68 x 33,46 in

Unique monoxyle piece, stamped by the artist



## *Max Chair*

#3

Sculptural chair

2021

Fire sculpted solid oak waxed and oiled

50 x 50 x 85 cm / 19,68 x 19,68 x 33,46 in

Unique monoxyle piece, stamped by the artist





---

## Pao Hui Kao (TW)

Artist, Designer

Pao Hui Kao studied Industrial Design at the Huaan University of Taipei. After four years working experience as a industrial designer and material researcher, she enrolled in the Master's program at the Design Academy Eindhoven where she received her Master of art in 2016. Her works shown great influences of innovated material, traditional crafts, social issue, ecorches. By making objects, sculptures and installations, her works emphasize on creating extraordinary aesthetics out of ordinary material and surrounding through continuous material experiments. The projects of Pao Hui Kao marrie the forces of nature to human artifacts. Her studio serves as ground for a constant research on experimental design, bringing higher meaning to manmade sculptural bodies and installations through their exposition to nature and its elements. This

process of elaboration allows Pao Hui to create a narrative where the natural and the artificial commune to form landscapes for the mind to explore the philosophical dilemmas that distress the human condition. Pao Hui Kao has created two collections for Spazio Nobile in 2020: *Paper Pleats* and *Lacquer Leaf*, in which she has experimented further with tracing paper, rice glue, Urushi lacquer paint and kintsugi. Pao Hui Kao was part of the finalists for the LOEWE Craft Prize 2022. Spazio Nobile is representing Pao Hui Kao since 2019.

## *Red Urushi Paper Pleats*

Side Board

2023

Tracing paper, rice glue, Urushi lacquer, red pigment

70 x 33 x 135 cm / 25,55 x 12,99 x 53,14 in

Unique piece in a random collection

Signed and dated by the artist





## *Red Urushi Paper Pleats*

Low Stool or Side table

2023

Tracing paper, rice glue, Urushi lacquer, red pigment

45 x 0 32 cm / 17,71 x 0 12, 20 in

Unique piece in a random collection

Signed and dated by the artist



## *Red Urushi Paper Pleats*

High Stool or Side table

2023

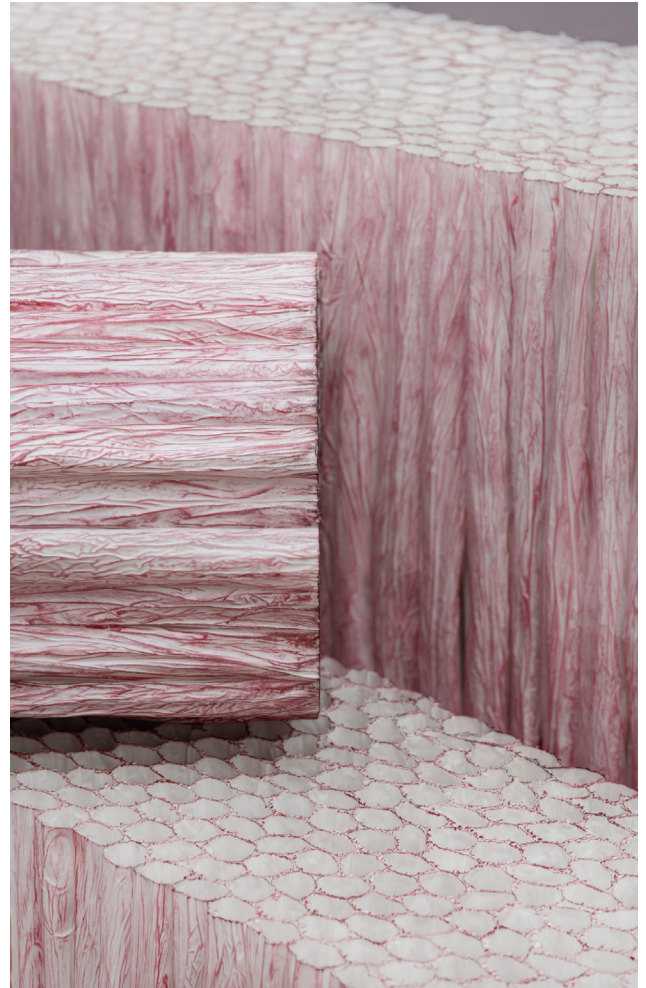
Tracing paper, rice glue, Urushi lacquer, red pigment

60 x 0 32 cm / 23,62 x 0 12, 99 in

Unique piece in a random collection

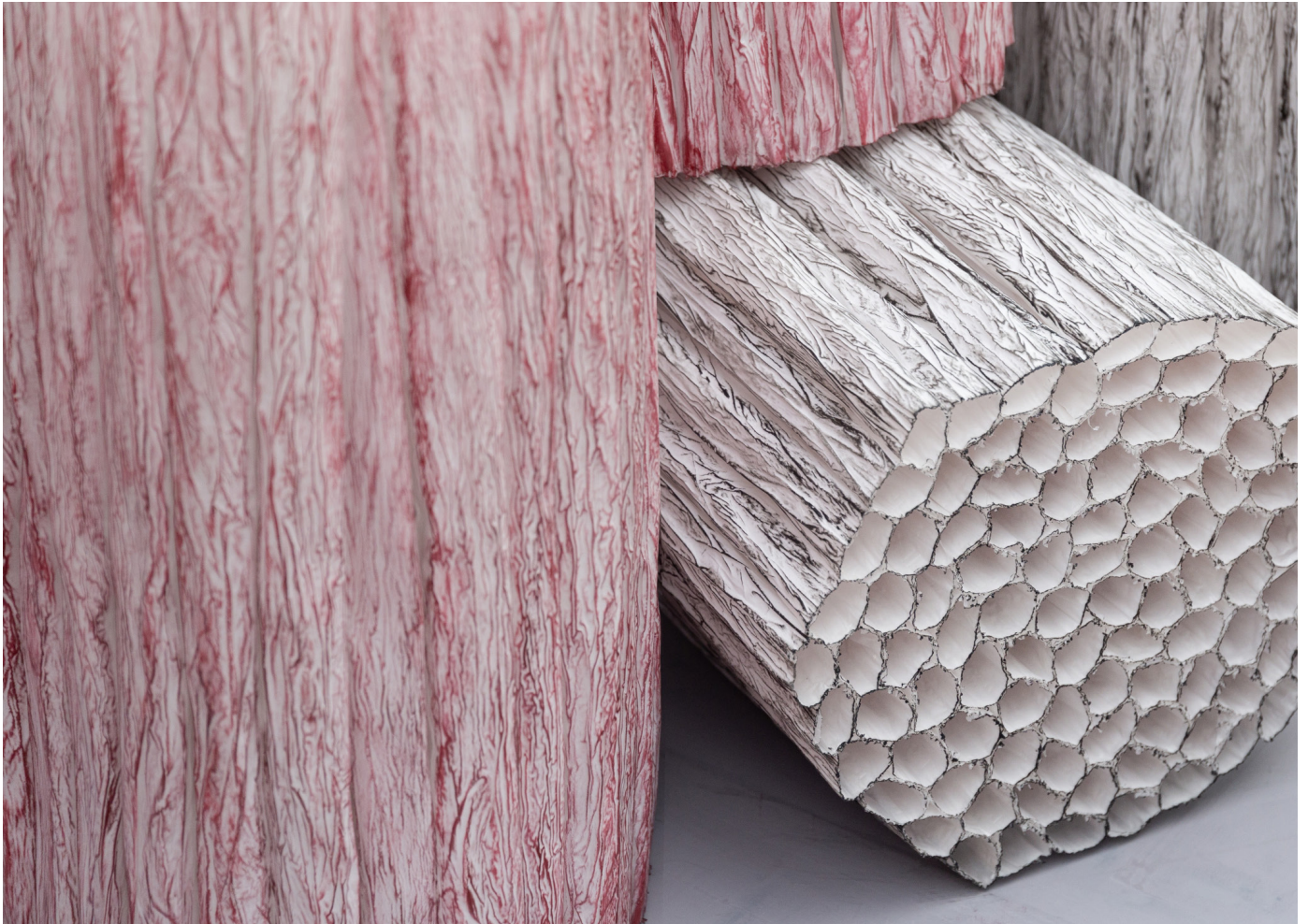
Signed and dated by the artist













## *Black Urushi Paper Pleats*

Bench or Low table

2023

Tracing paper, rice glue, Urushi lacquer, black pigment

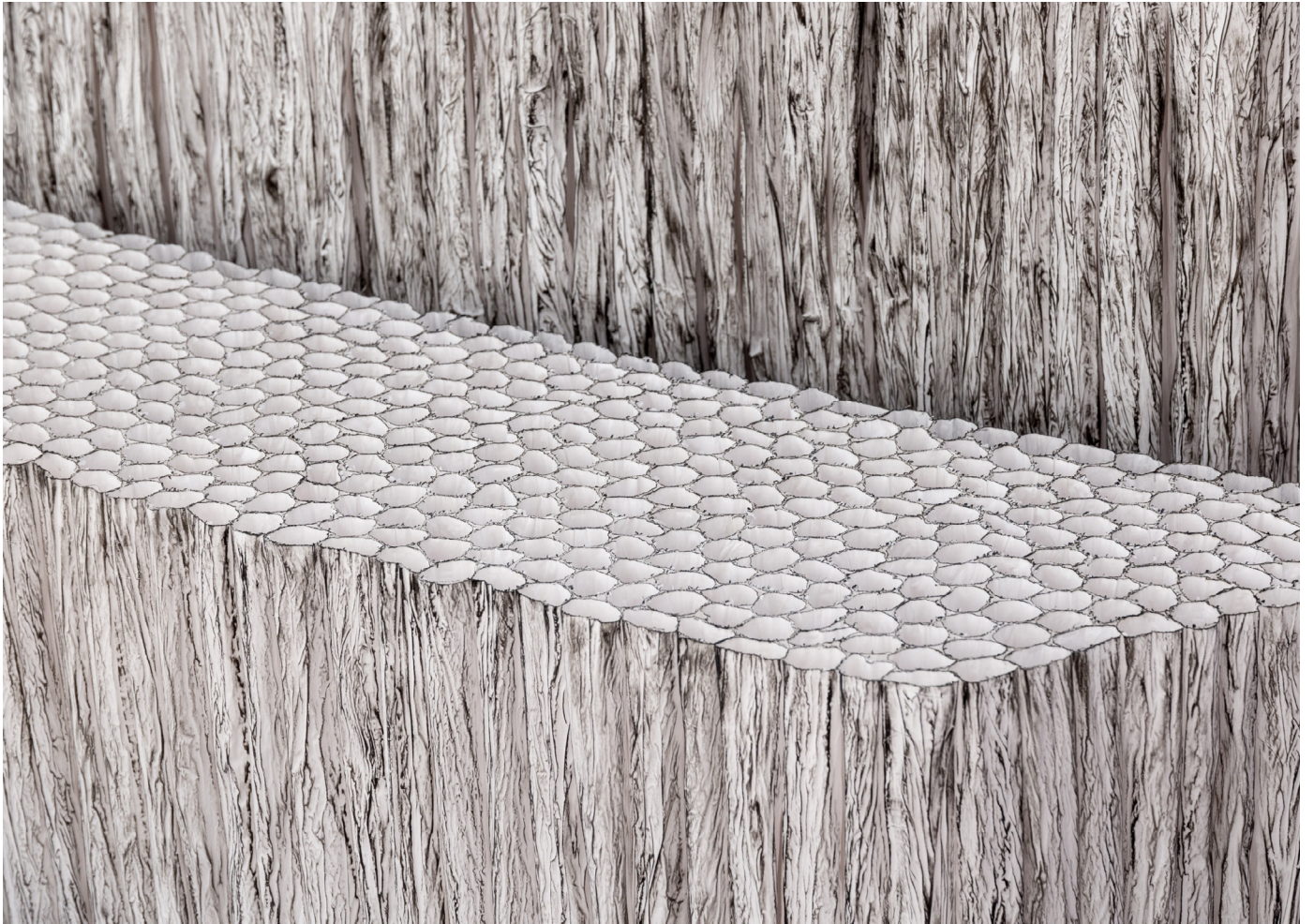
35 x 130 x 29 cm / 13,77 x 51,18 x 11,41 in

Unique piece in a random collection

Signed and dated by the artist

Loewe Craft Prize Finalist Exhibition 2022







## *Black Urushi Paper Pleats*

Low stool or Side table

2023

Tracing paper, rice glue, Urushi lacquer, black pigment

45 x 0 32 cm / 17,71 x 0 12, 20 in

Unique piece in a random collection

Signed and dated by the artist



## *Black Urushi Paper Pleats*

Low stool or Side table

2023

Tracing paper, rice glue, Urushi lacquer, black pigment

60 x 0 32 cm / 23,62 x 0 12, 99 in

Unique piece in a random collection

Signed and dated by the artist



## *Black Urushi Paper Pleats*

Side board

2023

Tracing paper, rice glue, Urushi lacquer, black pigment

70 x 33 x 135 cm / 25,55 x 12,99 x 53,14 in

Unique piece in a random collection

Signed and dated by the artist







## *Blue Urushi Paper Pleats*

Side board

2023

Paper, rice glue and Urushi lacquer, blue pigment

70 x 33 x 135 cm / 25,55 x 12,99 x 53,14 in

Unique piece in a random collection

Signed and dated by the artist

Pao Hui Kao has created two collections for Spazio Nobile since 2020, in which she has further experimented with tracing paper, rice glue, Urushi lacquer paint and kintsugi. Her first solo exhibition “25 Seasons” will be presented in autumn 2023 at the gallery. *Paper Pleats Original & Urushi* and *Urushi Lacquer Leaf*, are two collections from this long phase of experimentation to which rice glue and Urushi lacquer have been added. Her artistic processes are both rudimentary and sophisticated and date back centuries. A finalist for the LOEWE Craft Prize 2022, Pao works with materials that have been used for a very long time, innovating from what exists and pushing the boundaries towards a more contemporary object culture.





## *Blue Urushi Paper Pleats*

Low stool or Low side table

2023

Paper, rice glue and Urushi lacquer, blue pigment

45 x 0 31 cm / 17,71 x 0 12, 20 in

Unique piece in a random collection

Signed and dated by the artist



## *Blue Urushi Paper Pleats*

High stool or High side table

2023

Paper, rice glue and Urushi lacquer, blue pigment

60 x 0 33 cm / 23,62 x 0 12, 99 in

Unique piece in a random collection

Signed and dated by the artist



## *Blue Urushi Paper Pleats*

Low Table or Bench

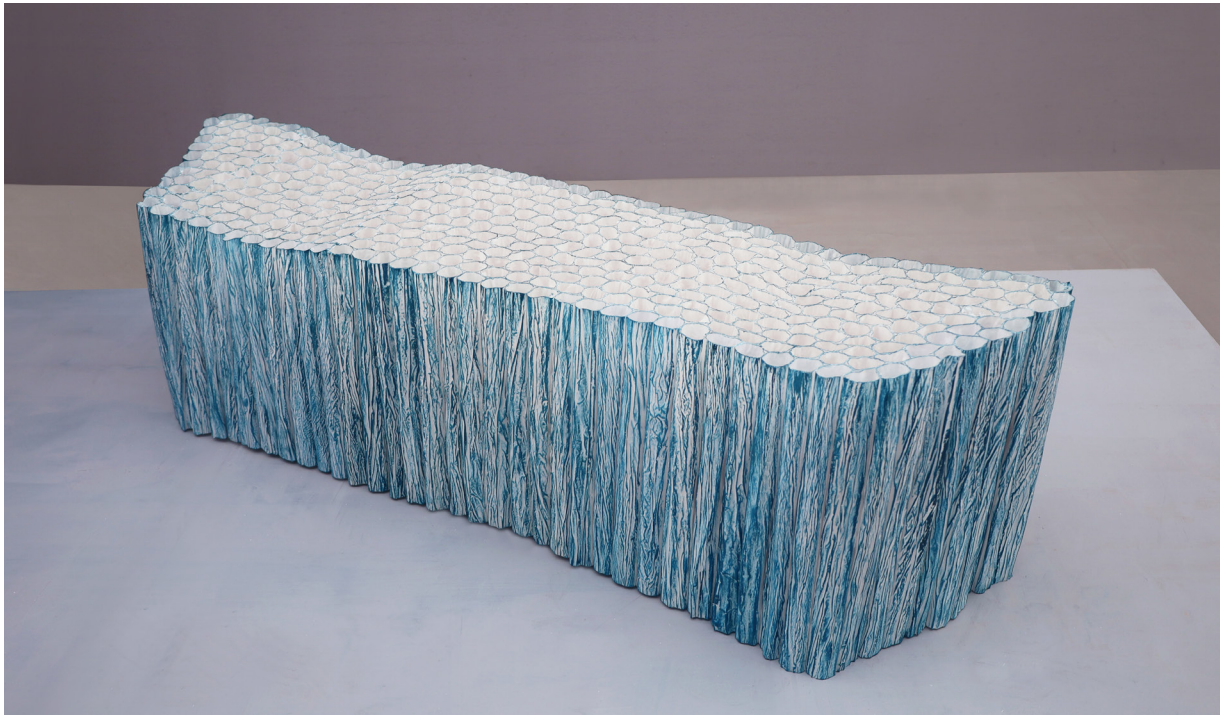
2023

Paper, rice glue and Urushi lacquer, blue pigment

35 x 130 x 29 cm / 13,77 x 51,18 x 11,41 in

Unique piece in a random collection

Signed and dated by the artist



## *Green Urushi Paper Pleats*

Low Stool or Side table

2023

Tracing paper, rice glue, Urushi lacquer, green pigment

45 x 0 32 cm / 17,71 x 0 12, 20 in

Unique piece in a random collection

Signed and dated by the artist



## *Green Urushi Paper Pleats*

High Stool or Side table

2023

Tracing paper, rice glue, Urushi lacquer, green pigment

60 x 0 32 cm / 23,62 x 0 12, 99 in

Unique piece in a random collection

Signed and dated by the artist







## *Original Paper Pleats*

Bench or Low table

2022

Tracing paper, rice glue, Urushi lacquer, black pigment

35 x 130 x 29 cm / 13,77 x 51,18 x 11,41 in

Unique piece in a random collection

Signed and dated by the artist



## *Red Urushi Large Lacquer Leaf*

Horizontal or vertical wall painting

2022

Paper, rice glue, Urushi lacquer, red pigment, gold powder polishing

70 x 122 x 12 cm / 25,55 x 48,03 x 4,72 in

Unique piece in a random collection

Signed at the back by the artist











---

## Katherine Huskie (UK)

Artist, Glass Blower

Katherine Huskie has been working with glass for over 10 years. Huskie started experimenting with glass at college and subsequently went to the University of Sunderland where she studied for a BA (Hons) in Glass and Ceramics. Huskie specialised in blown glass early on and since then it has become her passion. Glass blowing has taken Huskie all over the world including a year based in Australia where she worked with numerous different glass makers to expand and broaden her knowledge. The experience provided Huskie with the passion and determination to push her own glass designs. On returning to the UK she set up Devereux & Huskie Glassworks with James Devereux. They specialise in creating glass for designers and artists from the UK and overseas. Huskie has always been interested in pattern whether it is within nature, textiles

or geometry. She is always searching for new influences and how she can include the patterns in hot glass. Huskie was named Wimbledon Championship Artist 2018 alongside Nancy Sutcliffe. They collaborated to create 2 large scale glass works that are on display in the Clubhouse. In 2020 Huskie became a QEST scholar, she received a grant to allow her to continue learning the craft of Neon. Katherine Huskie is represented by Spazio Nobile Gallery since 2020. Huskie's work has a strong identity with form and pattern, whether it is technique or ascetic driven. Katherine Huskie is always searching for new influences and how she can incorporate the inspiration within hot glass. Huskie has travelled with her glass spending a year working in Australia learning new techniques and gathering experiences and ideas. Katherine Huskie is represented by Spazio Nobile since 2019.

## *Large Echinus Aqua*

Sculptural vessel

2022

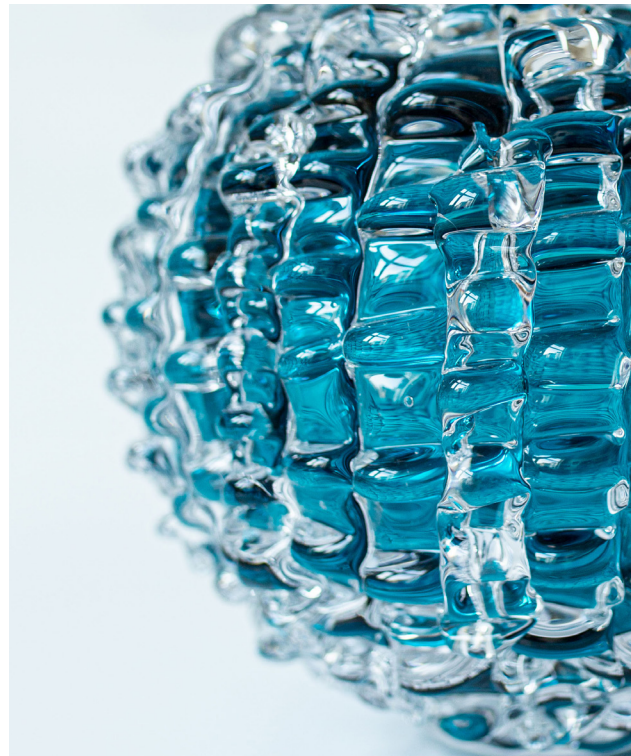
Hand blown and squeezed molten glass

ø 32 cm / ø 12,59 in

Unique piece in a random collection



The two collections *Echinus* and *Cassitos* were born from Katherine Huskie's love of handling hot glass and its tactile qualities. Mouth blown and heat pinched, each sculpture is inspired by the sea urchin shells or mussel shells found on the rocks of the British coast. Their rippling texture has inspired her master glassmaking where each piece of glass is individually applied to the surface and thus dictates the final shape of each of her unique pieces with their deep, shimmering colours. Her sculptures can also become vases for stylised bouquets.



## *Ostreum in Fuschia*

Sculptural vessel

2022

Hand blown and squeezed molten glass

20 x ø 30 cm / 7,87 x ø 11,80 in

Unique piece in a random collection





---

## Jin Kuramoto (JP)

Designer

Born in Hyogo prefecture, Japan and graduated from Kanazawa College of Art, Department of Design, Kuramoto worked from 2000 until 2008 as in-house designer for various companies. He founded Jin Kuramoto Studio in Tokyo in 2008. The studio engages in various product design developments such as furniture, home electric appliances and daily necessities. With his singular design approach, Kuramoto Studio introduces the essence of things with a clear and distinctive expression. He has won many IF Design Awards, Good Design Awards, Elle Decor Young Designers Talent in 2012. Kuramoto is also lecturer for Kyoto University of Art and Design, Keio University SFC in Tokyo, Kanazawa College of Art and Musashino Art University, Tokyo. Among his clients in Japan: Meetee (design and art direction), Ar ex Japan, Hukla, Jo Nagazaka /

Schemata Architects, Tokyo Gas (JP), Naft, Ideaco, Mikamo, Offecct (Sweden)... Jin Kuramoto is represented by Spazio Nobile since 2018.



## *The Bamboo Chair*

Sculptural Armchair

2017-2023

Varnished bended and woven bamboo

113 x 80 x 77 cm / 44,48 x 31,49 x 30,31 in

Edition 6 + 2 AP - *A New Layer Taiwan* Collection

By combining both the handmade bamboo bending process to the natural lacquer technique, the Japanese designer Kuramoto has conceived a new kind of furniture typology. Employing bamboo bending, which is one of the highest quality technique in Taiwan, Kuramoto tailors a new kind of seating. His elegant and refined chair is also simplified in terms of bamboo weaving and refresh the traditional look of the Asian furniture style. It reinforces the aesthetics and sustainability of the chair and introduces a sense of tactility and comfort. He has used 2 meters long bamboo pieces that are bent and assembled.











## Isaac Monté (NL) Designer

Isaac Monté has a fascination for unusual materials and an urge to master and manipulate these materials. He is a Belgian designer based in Rotterdam, The Netherlands. Isaac studied at art academies in Belgium, The Netherlands and Norway. His interest in product design developed at Willem de Kooning Academy in Rotterdam, where he graduated as product designer in 2013. The work of Isaac Monté has been shown in a variety of galleries and exhibitions in Belgium, The Netherlands, Italy and Germany. Isaac is lecturing and leading workshops in various institutions, from the industry (IKEA) to art academies. Monté was awarded The Threshold Price as most talented graduate in 2013, with his project "Filter Factory". In 2014 he was awarded the Henri Winkelman Award for young creative entrepreneurs in Rotterdam. In 2015 he was announced as one of the recipients of the Bio Art and Design Awards. This award gave him the opportunity to design "The Art of Deception" in collaboration with Toby Kiers, Professor in Evolutionary Biology at the Free University in Amsterdam. Spazio Nobile represents Isaac Monté since 2019.





## *Crystallized Large Pink*

#12

Sculptural Vase

2022

Crystallized minerals

38 x Ø 42 cm / 14,96 x 16,53 in

Unique piece in a random collection

Numbered and signed by the artist



The *Crystallized* is the result of research into stalagmites, one of the greatest wonders of nature. The growing process of the objects can be seen as a metaphor for time. Each object is unique in shape, colour and texture, due to the organic development of the object. The objects are the result of the natural crystallization of minerals and the influence of the designer on the formation process. This process can take up to several weeks to obtain the perfect shape, interesting colour combinations and dimensions of crystals.



# *Crystallized Very Large Sea Green*

Sculptural Vessel

2022

Crystallized minerals

33 x 0 55 cm / 12,99 x 21,65 in

Unique piece in a random collection

Numbered and signed by the artist





## Päivi Rintaniemi (FI)

Artist, Ceramist

---

Päivi Rintaniemi graduated with a Master of Arts from the Aalto University in Helsinki, Finland. The varied art disciplines taught at the university enabled her to develop solid professional skills in both design and sculpture. After her studies, Rintaniemi concentrated mainly on designing and manufacturing everyday objects. She shows her Amfora creations at major international design shows. Sculpture has always been an important counterbalance for her design work. Rintaniemi's starting points for structuring her works of art are shape and dimension. Her pieces are characterised by her way of working the clay, which is also often a significant factor in the nature and narrative of her sculptures. Over the years, colour has been replaced by structured surfaces and earthy tones. Rintaniemi's artistic work is meditative, with an interaction between the material and the themes. Through her works, Rintaniemi strives to unveil her relationship with nature, and to let her audience appreciate the uniqueness and miracles of life. Päivi Rintaniemi's work has been recognised both nationally and internationally.

She received the Finnish designer award in 2008, and first prize at the International Competition of Contemporary Ceramic Art in Faenza, Italy, in 2013. She has participated in many art shows in Finland and abroad, and her works are found in Finnish national collections and museums, as well as in private collections. Spazio Nobile showed her work throughout the Finnish Season "*Keep Your Garden Alive*" in 2019. Spazio Nobile represents Päivi Rintaniemi since 2020.

# Calix

Sculpture

2021

Stoneware clay with chamotte

94 x 85 x 61 cm / 37 x 33.46 x 24.01 in

Unique piece

The sculptural ceramics of Finnish artist Päivi Rintaniemi are meditative and mystical, bringing forth clarity and luminosity, while echoing the Nordic radiance. With its organic, folded and split form, *Calix* is a metaphor for man's sensitive and spiritual relationship with nature. The chamotte stoneware comes to life under the delicate touch from which round and harmonious surfaces emerge, like cracked shells, chrysalises, nests or corollas. Through her sculptures, Rintaniemi reveals her relationship with her environment and makes everyone appreciate the uniqueness of existence and the miracles of life.







# *Thesaurus*

Sculpture

2019

Stoneware clay with shamott

38 x 90 x 80 cm / 14,96 x 35,43 x 31,49 in

Unique piece







# *Adspectum*

Sculpture

2019

Stoneware clay with shamott

33 x 54 x 59 cm / 12,99 x 21,25 x 19,29 in

Unique piece







# *Unio*

Sculpture

2010

Stoneware clay with shamott

54 x 60 x 56 cm / 21,25 x 23,62 x 22,04 in

Unique piece







---

## Bela Silva (PT)

Artist, Sculptor, Ceramist

Bela Silva was born in Lisbon, Portugal and studied at the Fine Arts Academy in Lisbon and Porto, Portugal, as well as at ArCo, Lisbon, Norwich Fine Arts in the UK, and The Art Institute of Chicago in the United States. She currently splits her time between Lisbon and Brussels. She has exhibited at Ann Nathan Gallery and Rhona Hoffman Gallery in Chicago, at Lisbon's Museu do Azulejo (Tile Museum), Museu Anastácio Gonçalves, Palácio da Ajuda and Fundação Ricardo Espírito Santo, as well as in various exhibitions in China and in Japan. She has participated in group shows in Belgium (Kleureyck, Designmuseum Gent, Lille 3000), Brazil, Spain, France (Biennale de Vallauris), and has run ceramics workshops in Japan and Morocco. She has been awarded residencies at Kohler, Wisconsin, USA, and at Fabrica Bordalo Pinheiro, Caldas da Rainha, Portugal. She has created several pieces of public art, including painted murals on tile for Lisbon's Alvalade subway station, and ceramic panels for Japan's Sakai Cultural Centre gardens and the João de Deus School in the Azores Islands. She created 12 large fantastical pieces in

pieces of public art, including painted murals on tile for Lisbon's Alvalade subway station, and ceramic panels for Japan's Sakai Cultural Centre gardens and the João de Deus School in the Azores Islands. She created 12 large fantastical pieces in 2017 for the gardens of the Fine Arts museum, while exhibiting her work that same year at the Museum of the Orient in Lisbon. Spazio Nobile has represented Bela Silva since 2017 and has dedicated her several exhibitions at the gallery and at international fairs worldwide, including the solo show *Despierta Corazón Dormido* in 2020 coupled with the release of her artist book, *Codex Mexico*. In 2021, Spazio Nobile launched three jewelry collections with the artist: "Mon Amour, Mexico", "Petalouda" with high-end Berlin-based fashion brand Rianna + Nina and "Four Seasons", wall sculpture jewelry to hang on the wall as 'ex-votos'. She was part with Spazio Nobile of *Next of Europe*, a selection of European "Living Treasures" curated by Jean Blanchaert & Stefano Boeri at Homo Faber, Fondazione Giorgio Cini, Venice, Italy in Spring 2022. The gallery inaugurated a showcase with Bela Silva in Le Sablon Art District, in front of Les Minimes Baroque Church in 2021-2022. The gallery presented in 2022 her Duo Exhibition "Tree of Life" with the Belgian textile artist Vera Vermeersch. Oscar Niemeyer's Niteroi Museum of Contemporary Art in Brazil is devoting a solo exhibition to her next Spring. Bela Silva is represented by Spazio Nobile since 2017.



## *Endless Line*

Work on paper

2023

Acrylic, gouache and Indian ink on paper

155 x 265 x 5cm / 61 x 104,33 x 1,96 in

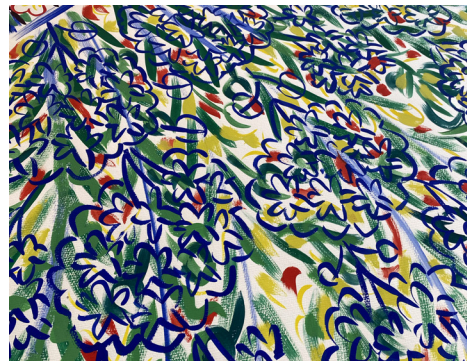
Unique piece signed by the artist

Framed in a white painted American box

Portuguese artist Bela Silva, who divides her time between Brussels and Lisbon, brings a contemporary baroque aesthetic to her unique, exuberant and narrative ceramic sculptures and paintings. Drawing on an eclectic range of influences from her travels, art history and archaeology, she adorns her vessels and creations with bold organic forms, bizarre animals or robust interpretations of classical decorative motifs.









## *Souvenirs heureux*

Work on paper

2023

Acrylic, gouache and Indian ink on paper

120 x 120 x 5 cm / 47,24 x 47,24 x 1,96 in

Unique piece signed by the artist

Framed in a white painted American box



## *The Bird House*

Sculpture

2022

Painterly glazed stoneware

62 x 62 x 60 cm / 24,04 x 24,04 x 23,62 in

Unique piece signed by the artist







## *Naturaleza*

2023

Painted and glazed ceramic sculpture  
36 x 20 x 50 cm / 14,17 x 7,87 x 19,68 in  
Unique piece signed by the artist





## Piet Stockmans (BE)

Artist, Sculptor, Ceramist

---

Born in Leopoldsburg (Belgium) in 1940, Piet Stockmans lives on the site of Genk's C-Mine, his career fluctuates between art, the applied arts and industrial design. For nearly 30 years, he taught product design at KHLim in Genk and the Design Academy Eindhoven, and collaborated with industry – notably 25 years with Royal Mosa. New ideas and experiments continue to nourish his work as an artist-ceramicist, ranging from unique or multiple pieces of applied art, to integrations of his porcelain works, to architecture. Cultural ambassador for Flanders in 1995, winner of the Henry Van de Velde Career Award (Flanders Design) in 1998, his works have been included in major exhibitions (solo or group) and have been the subject of memorable installations. Stockmans has seen his creations take their place in the largest Belgian and international collections: PMMK Oostende, Designmuseum Gent, Stedelijk Museum Amsterdam, MAD New York, Met New York, Mint Museum of Craft and Design, Musée national / Cité de la Céramique de Sèvres, V&A

London, etc. He has also led many workshops and conferences in major art and design schools, and has participated in important biennials of ceramics. As Glenn Adamson states about Stockmans's practice «Ceramics is, quite naturally, an art of edges. Every thrown vessel is a perimeter manifested, an object in orbit around itself; every ceramic sculpture a constructed mass whose energies congregate on the surface. Though it has a reputation for being domestic, even decorative, this is a fundamental misunderstanding: it can be the most extreme of art forms, poised always to push outward, testing its own boundaries. This is Piet Stockmans' view of the matter. He has conducted his whole career at the edge, both literally and figuratively. Among his most recognizable compositions feature numerous porcelain vessels and imperfect fragments, the lips of each marked out in a wash of blue. Despite their outward serenity, these installations can also be understood as energy fields, welling up against their own limits. The individual variations of each painterly edge suggest a barely controlled tide, a brimming chaos beneath. Over the course of his six decades in the medium, Stockmans has pursued the collision between order and turbulence, strength and fragility, following that dialectical instinct wherever it leads him. In his hands, ceramic seems not so much a terrestrial art form as an oceanic or celestial one: a domain of infinite amplitude, containing forces beyond our reckoning.» Spazio Nobile represents Stockmans since 2017.

# *Wilde Strippen*

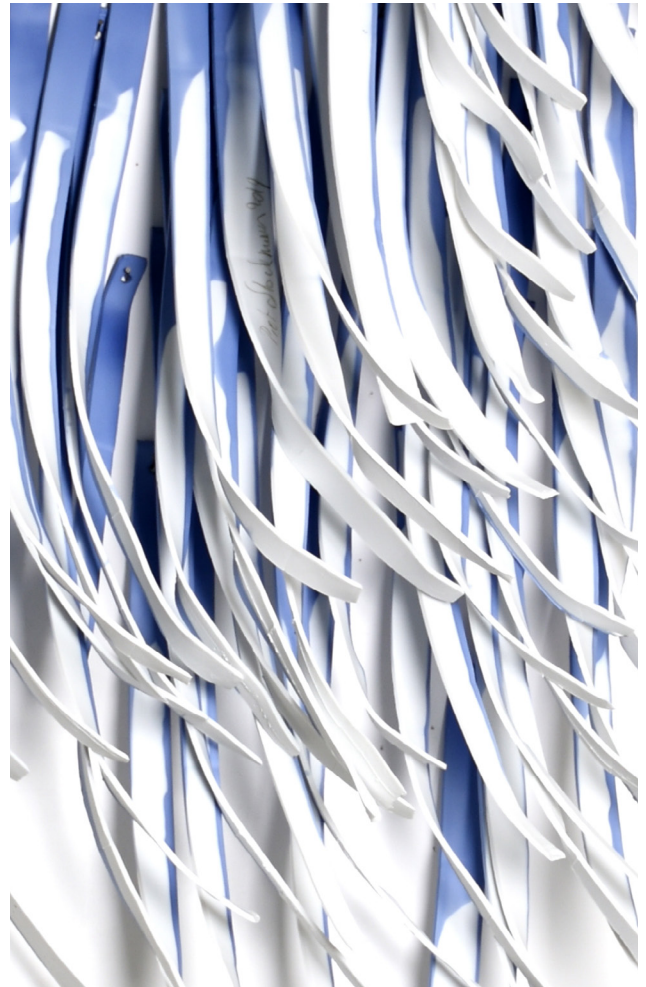
Wall installation

2023

Porcelain with Cobalt blue «Stockmansblauw»

185 x 105 x 12 cm / 72,83 x 41,33 x 4,72 in

Unique piece, signed and dated by the artist







---

## Jacqueline Surdell (US)

Artist, Sculptor

Jacqueline Surdell was born and raised in Chicago, IL. She received her MFA in Fibre and Material Studies from the School of the Art Institute of Chicago in 2017. The City's history of industrialism, labour, and Midwest grit plays a significant role in her tridimensional work. Surdell's Polish grandfather worked in the steel mills in Hegewisch while her Dutch grandmother was a landscape painter. Those close familial memories influence Surdell's complex terrain between art-making, body, sanctuary, and spirit. From childhood through college, Surdell was a competitive athlete. She approaches her studio practice with a disciplined resolve forged in the intense, repetitive, realm of competitive sports. Her years as an athlete primed her interest in repetitive, laborious, craft-based practices. Building her wall sculptures demands full body action as the body becomes a weaving shuttle and the hand a brushstroke. Although her material is fibre, her approach is painterly. She manipulates her medium with knotted layers, reducing the material to open the structure, and draping to create volume and texture. Surdell combines the

meticulous precision of craft with the unbridled spontaneity of contemporary painting. She reimagines the woven canvas as a space of undulation and growth. As the expanded histories of painting materialize in her work as content, simultaneously, swollen tendrils and textures of bound rope deny illusions of the classically painted picture plane. The works actively bridge the division between painting and sculpture. In this way, her work calls into association other binary categorizations such as rigid and collapsed, construction techniques coded as masculine or feminine, and ontological spaces between body and sculpture. Her energetic and materially grounded practice brings to attention the tools, environments, and actions that contain and display performances of labour, history, and power. Jacqueline Surdell is represented by Spazio Nobile since 2020.

## *Untitled [smoke]*

Wall Installation

2023

Nylon cord, cotton cord, steel

180 x 84 cm / 71 x 33 in

Unique piece



*Untitled Series* employs cotton cords of varying sizes and consistencies, woven and tied together with distinct rectangular configurations. The suppleness and porousness of the cotton rope is self consciously without form or saturated color – an anti-painting. With these works Surdell reimagines the woven canvas as a space of undulation and growth – employing my body as a weaving shuttle, and my hand as brushstroke.







*Waiting for Colors after the Storm [before the Sun]*

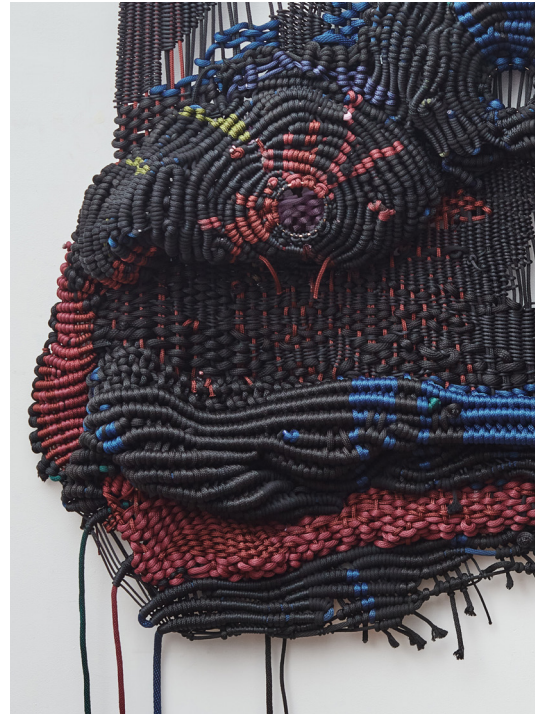
Wall Installation

2023

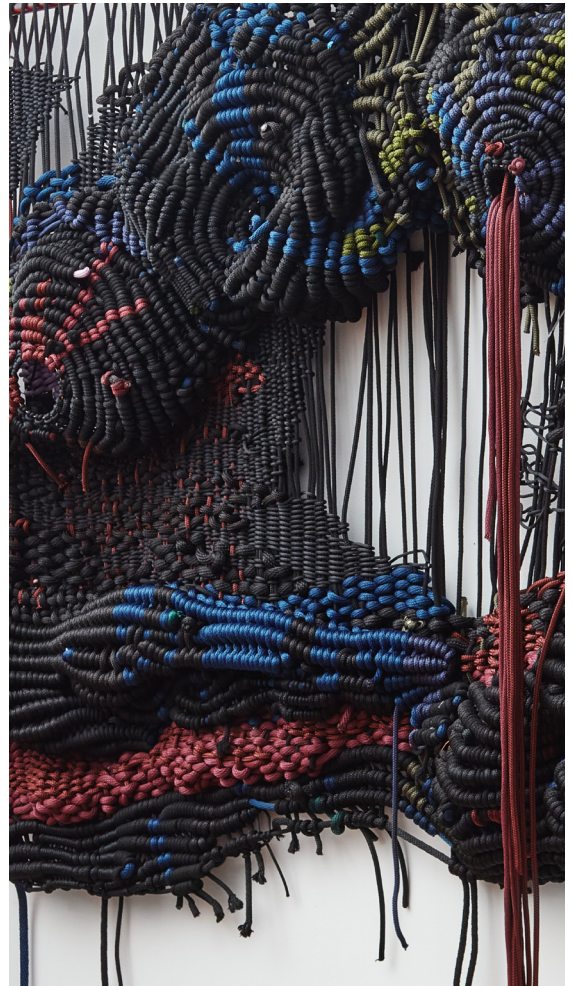
Nylon cord, cotton cord, steel

192 x 274 cm / 78 x 108 in

Unique piece









## Ann Beate Tempelhaug (NO)

Artist, Ceramicist

Ann Beate Tempelhaug was born in Mosjøen in northern Norway. She graduated from the Bergen School of Art and Crafts, and since the 1980s has pursued a career as an artist recognised both in Norway and abroad. Her work can be found in public collections such as the National Museum in Oslo, KODE Bergen, Kunstsilo Kristiansand and the Nordenfjeldske Art Museum in Trondheim, as well as in private collections (Rothschild, Hermès, etc.) and institutional collections including those of the municipalities of Bergen, Kristiansand, Mosjøen, Stavanger, the royal residency Stiftsgården in Trondheim, and the temporary collection at the Norwegian Prime Ministers' residence. Recent exhibitions include the FORMAT gallery, which also showed her at Collective New York and Collect at the Saatchi Gallery in London, the KRAFT gallery in Bergen, Bomuldsfabriken Arendal, Kunstpunkt Lista, T I D Gallery, Mandal, Agder Art Center and the Arteriet gallery in Kristiansand. She has received numerous public and private commissions from

the municipalities of Risør and Vestnes, the universities of Kristiansand and Bergen, and care centres in Nøtterøy, Tangvall and Kristiansand, and has to date benefited from several art grants: National Art Scholarship - The Art and Craft Foundation and Project Funds - Norwegian Fine Art Association. Spazio Nobile has represented Ann Beate Tempelhaug since 2020 and has exhibited her work in group shows such as *The New Age of Humanism* (2020), *Spazio Nobile At Home* (2021-22-23) and numerous international fairs including PAD Paris, PAD London, Art Week Luxembourg and Collectible Brussels. Recent and emblematic works *Mirage*, *Ultra* and *North* will soon be on show at PAD London, Berkeley Square, from 10 to 15 October, and at Salon Art+Design, The Armory Show, New York from 9 to 13 November 2023. Her first Solo Show *Nord* takes place from 8 September to 19 November 2023, with the kind support of Norwegian Crafts and the Norwegian Ministry of Foreign Affairs.

# North

Painted ceramic wall installation

2023

Stoneware porcelain, glaze

182 x 111 x 15 cm / 71,65 x 43,70 x 5,90 in

Unique piece signed by the artist on the back of the ceramic



*North* is a lyrical work that let the light dance at the heart of the ceramic compositions. Blues in all their hues, from grey to almost translucence, predominate, illuminating skies flooded with Nordic light at different seasons of the year.









---

## Kiki van Eijk (NL)

Designer

Kiki van Eijk grew up in the Netherlands where she spent her youth immersed in nature daydreaming and drawing. She is now one of the most accomplished names in the world of Dutch design. Her interest in product design developed at the Design Academy Eindhoven where she met her future partner, designer Joost van Bleiswijk. Her wide range of work extends from installations to furniture, from lighting to textiles, ceramics or glassware. Her independent sculptural work has been presented in museums, galleries and fairs worldwide, including Basel, London, Paris, Milan, New York, Tokyo and Rome. Inspired by the smallest details of the everyday and by the forms of nature, Kiki's world is whimsical and colorful, lyrical and personal, yet refined by a rigorous attention to the process and skillful craftsmanship. Regardless of the scale of the work, the handmade and human touch remains at the heart of her practice and reinforces an intuitive and forward-thinking approach to design in the 21st century. Her collaborations include brands as Hermès, Google, Saint- Louis, Cor Unum,

Bisazza, Häagen-Dazs, Serax, Bernhardt Design and Nodus. In recent years she has collaborated with companies and institutions like Coachella, Studio Edelkoort Paris, Audax Textile Museum, Zuiderzee Museum, Noord Brabants Museum, Design Academy Eindhoven, Venice Projects, Rijksmuseum, Centraal Museum Utrecht and private collectors. After her solo show *The New Harvest* in 2021 at Lempertz in Brussels, Kiki van Eijk & Joost van Bleiswijk's first Duo Show, *Serendipity* took place at the gallery in Spring 2022 followed by *A Forest of Collision and Raku* at Masterly, Milan, April 2023. The gallery represents Kiki van Eijk since 2021.

## *Civilized Primitives*

Sculptural Day Bed and Hanging Lamp

2023

Casted bronze, polished, patinated, foam and leather

197 x 90 x 170 cm / 77,55 x 35,43 x 66,92 in

Edition 8 + 2 AP

Numbered and engraved by the designer

Kiki drew inspiration from survival techniques that offer ingenious, yet unexpectedly beautiful solutions for construction and functionality. Branches, meticulously chosen for their ideal size and shape, were crafted and fine-tuned in our dedicated wood workshop. These branches were then transformed with strength and aesthetic consideration before being cast in bronze. While the natural elements retained their raw appearance, the elements touched by human hands were polished. This created a harmonious contrast, uniting both natures within a single object.







## *Civilized Primitives*

Sculptural Mirror

2023

Casted bronze, polished, patinated

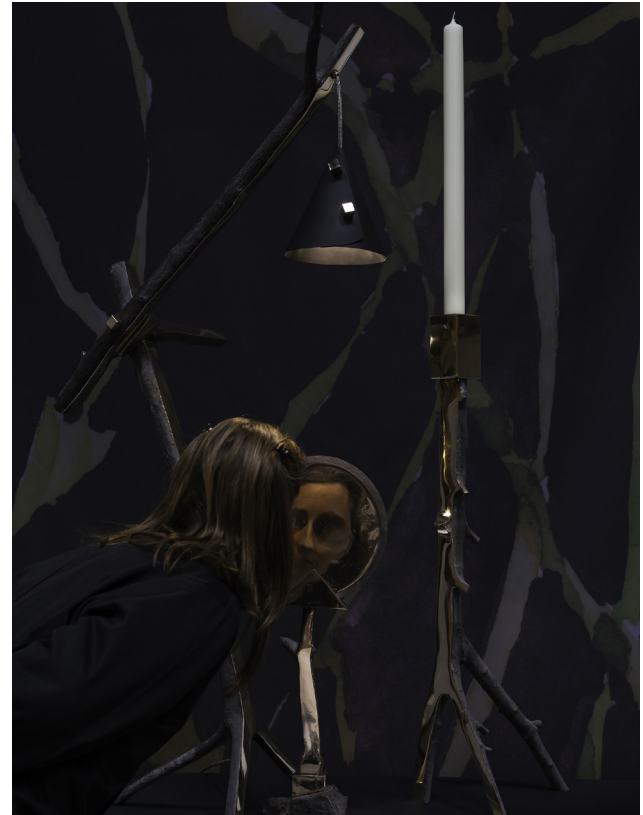
26 x 15 x 65 cm / 10,23 x 5,90 x 25,59 in

Edition 8 + 2 AP

Numbered and engraved by the designer



A mirror which shows the art of improvisation inspired on survival methods. Natural primitive elements are combined with human primitive elements in a harmonious fashion. The natural elements have stayed rough as they were and the human elements have been polished in order to create a harmonious contrast within one object.



## *Civilized Primitives*

Sculptural Desk and Hanging Lamp

2020

Casted bronze, polished and patinated

194 x 100 x 70 cm / 76,37 x 39,37 x 27,55 in

Edition 8 + 2 AP

Numbered and engraved by the designer







166

Kiki van Eijk



167

Kiki van Eijk



## *Civilized Primitives*

Candle holder

2023

Casted bronze, polished and patinated

35 x 25 x 95 cm / 13,77 x 9,84 x 37,40 in

AP 1/2

Numbered and engraved by the designer



A candleholder which shows the art of improvisation inspired on survival methods. A natural primitive element is combined with a human primitive element in a harmonious fashion. The natural elements have stayed rough as they were and the human elements have been polished in order to create a harmonious contrast within one object.







---

## Fabian von Spreckelsen (DE)

Sculptor, Artist, Designer

A graduate of the Academie Beeldende Kunsten in Maastricht, the Netherlands, German-born artist Fabian von Spreckelsen is now based in the Netherlands. He cultivates a deep fascination for nature, passed down from his biologist father, who guided Fabian on the discovery of the delightful world of living organisms. This relationship and interaction between a constructed environment and unspoiled nature has steered his artistic instincts. Fabian von Spreckelsen is captivated by the links between humans and the natural elements surrounding them, and in his sculptural designs, he continuously interprets nature as a powerful force, requiring respect more than protection. The resulting strong and radical artwork draws inspiration from flora and fauna in their abstract geometries, with both strength and beauty in their simplest, sometimes abstract forms. The lines of his work are clear-cut, producing visual effects that are simultaneously minimal and maximal. With his sculptural approach, he creates unique and bespoke pieces with a specific personality; the variety of his works

reflects the diversity of nature and its connection with profound human values. He aims for a balance between arithmetical design, craftwork and artistic freedom, while always working with a respect for the environment and harmony with his surroundings. His recent monumental sculpture project, "Freddy", in Corten steel, takes him in a new, more conceptual direction, that he also translates into his new collection of seven cabinets that combine weathered iron and tanned leather, reflecting the stages of his life in a direct extension of the artwork "*The Soul Portrait*" which was show at the first edition of "*Le Sacre de la Matière*". A solo exhibition of his work was held during the 2021-2022 winter, in the gallery's Studiolo. Spazio Nobile has represented Fabian von Spreckelsen since 2017.

# *Comfort*

Sculptural furniture

2021

Eroded steel and tanned bull leather cabiner

75 x 30 x 130 cm / 29,52 x 11,81 x 51,18 in

Edition 8 + 2 AP

Numbered and stamped by the artist





176

Fabian von Spreckelsen



177

Fabian von Spreckelsen



## Philipp Weber (DE)

### Designer

German creative Philipp Weber's holistic methodology melds his keen craft-led sensibility and affinity for humanism. Unaffected by the saturated trends that drive the design industry, the young designer delves deep into different subject matter. He approaches each topic from a comprehensive set of vantage points: the history and analysis of established manufacturing processes to the integration of seemingly disparate yet surprisingly appropriate associations. Graduated of Design Academy Eindhoven and University of Arts Berlin, he anchors and translates his unhurried, discursive explorations into tangible concepts and functional forms. These accessible applications push beyond the previously accepted limitations of age-old techniques and in turn, suggest ways in which to ensure their survival. It is no wonder that his chosen mediums tend to be glass, coal byproduct, cork, and textile. Though the designer frames his projects as thought-provoking referential, experimental, and expressive statement pieces, the new material properties they introduce have the most impact.

As the co-founder and creative director of Analog, a commercial venture developed through Berlin Glassworks, Weber has been able to put this unique praxis-based approach to good use. His interest in subverting traditional modes of production and research, now also incorporates a desire to explore new unconventional business models. Weber's first exhibition with Spazio Nobile was in 2017 as part of *Season IV-Crystallized*, with his experimental projects *A Strange Symphony* and *From Below* which was exhibited at CID-Hornu, Belgium, within the exhibition *At the Coalface, Design in a post-carbon age*, until 8 January 2023. Weber has presented, part of the show *Threads of Nature* in 2021 his vision of glass and lighting, launching a new bespoke lighting collection for the gallery, *Filigree*, with grotesque black and refined white canes. Spazio Nobile represents Philipp Weber since 2020.



## *Celadon Filigree*

Pendant Lights

2023

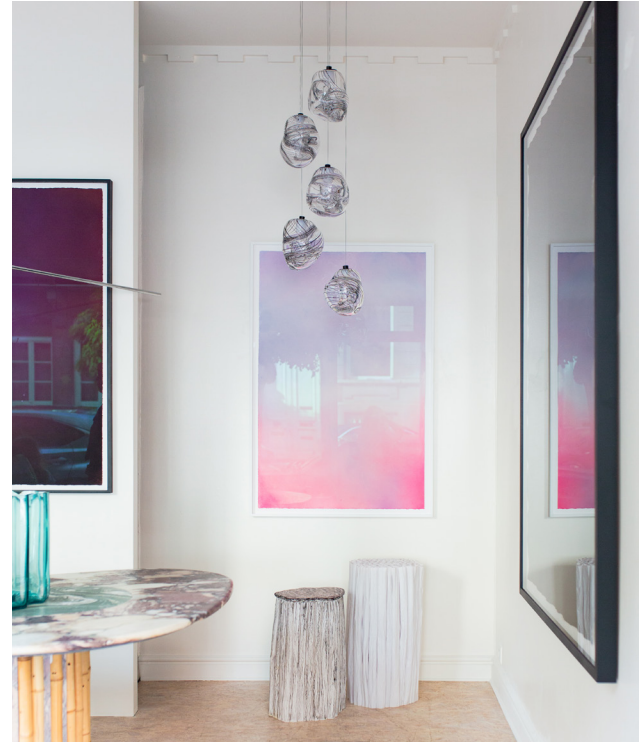
Hand blown glass lighting chandeliers

Various dimensions

Each glass element is unique



Weber presents his vision of glass and lighting, launching a new bespoke lighting collection for the gallery, *Filigree*, with grotesque black and refined white canes. The filigrana style originated on the island of Murano in the mid-16th century and spread rapidly to other parts of Europe where the *façon de Venise* glass was produced. This project falls perfectly in line with Spazio Nobile's long-running interest in glass and its project, *Glass is Tomorrow*.





### Lise Coirier (FR-BE)

Art Historian, Art Curator and Publisher,  
Co-founder of Spazio Nobile

---

With degrees in management and art history, French-born Lise Coirier has lived and worked in Brussels for 30 years. There, she has run her consulting agency Pro Materia for 20 years, and remains committed to managing projects that she creates from the start. She is Founder and Editor-in-Chief of *TL Magazine True Living of Art & Design*, started in 2008, a bilingual (FR/EN) biannual magazine available in print and online, and dedicated to culture, art and contemporary design. Lise Coirier has also initiated several European projects, such as Human Cities and Glass is Tomorrow. An exhibition curator, she has in addition edited several books, including “*Le Guide des Métiers d’art à Bruxelles et environs*” (ed. Best of Publishing / Fondation pour les arts, 1998 - 2000), “*Design in Belgium - 1945-2000*” (ed. Racine, 2002),

*Design.be, Belgium is Design* (ed. Stichting Kunstboek, 2015 - 2010), monographs of Xavier Lust (ed. Stichting Kunstboek, 2008) and Anne Derasse (ed. Betaplus, 2014), *Glass is Tomorrow* (ed. Pro Materia / Archibooks, 2015), and more. In 2016, she opened Spazio Nobile Gallery in Brussels, with her partner and husband Gian Giuseppe Simeone, specialised in contemporary applied arts, design and photography.



## Gian Giuseppe Simeone (IT-SE)

Art Historian & Archæologist,  
Co-Founder of Spazio Nobile

---

Gian Giuseppe Simeone is an art historian and archaeologist specialised in the preservation and valorisation of cultural and artistic heritage. Italo-Swedish, based in Brussels since 1979, he works as a consultant on cooperation projects and programmes in the fields of contemporary creation and cultural heritage for the European Commission and other national and international organisations. His consulting firm Culture Lab, launched in 2002, focusses on the design and management of international cooperation projects and programmes in the field of culture, primarily supported by the European Union. Within this context, he has contributed to the implementation of major exhibitions, research programmes and co-productions ventures in disciplines including heritage, music, theatre, the visual arts and design. He has also carried out several

study, assessment and consulting missions in Europe, Africa and the Mediterranean, with the goal of highlighting the importance of culture in the policies of the European Union, and its role in socio-economic development. Gian Giuseppe Simeone is author of several reference works on the study and recognition of the value of European and international culture and heritage. In 2016, he co-founded Spazio Nobile gallery with Lise Coirier.

*Info*

## *Pleiades*, Group Exhibition

Foyer Brisé, Garnier & Linker, Ernst Gamperl,  
Kaspar Hamacher, Pao Hui Kao, Katherine Huskie,  
Jin Kuramoto, Isaac Monté, Päivi Rintaniemi, Bela Silva,  
Piet Stockmans, Jacqueline Surdell,  
Ann Beate Tempelhaug, Kiki van Eijk,  
Fabian von Spreckelsen, Philipp Weber

Press Preview  
9.11.2023, 3 pm-4 pm

DIA Fundraiser Preview  
9.11.2023, 4 pm-5 pm

Collectors & VIP Preview  
9.11.2023, 5 pm-9 pm

Public Opening  
10.11.2023, 10 am-8 pm  
11-12.11.2023, 11 am-7 pm  
13.10.2023, 11 am-5 pm

Salon Art + Design  
Park Avenue Armory  
New York City  
USA



*Save the date*

Spazio Nobile Gallery & Studiolo  
Ann Beate Tempelhaug  
*Nord*, Solo Show  
8.9-19.11.2023

Spazio Nobile Gallery & Studiolo  
Pao Hui Kao  
*25 Seasons*, Solo Show  
24.11.2023-17.3.2024

NOMAD St Moritz  
Hotel Eden  
Group Show  
22 - 25.2.2024

Spazio Nobile Gallery  
Åsa Jungnelius, Solo Show  
22.3 - 16.6.2024  
Vernissage 21.3.2024

*Contact*

Spazio Nobile  
Contemporary  
Applied Arts, Design &  
Photography

Lise Coirier,  
+32 475 53 19 88,  
lc@spazionobile.com

Rue Franz Merjay, 142-169,  
1050 Brussels, Belgium  
+32 2 768 25 10  
www.spazionobile.com

Gian Giuseppe Simeone  
+32 477 27 29 04,  
ggs@spazionobile.com

Me - sa / wo - za / Wed  
- Sat, 11.00-18.00 & sur  
rendez-vous / op afspraak /  
by appointment

Eugénie Frémot,  
+32 477 73 37 58,  
eugenie@spazionobile.com





When art historians Lise Coirier and Gian Giuseppe Simeone opened Spazio Nobile in 2016 in the lively and cosmopolitan Brugmann Square area of Brussels, they combined their passions for design and art history, establishing a scholarly dialogue between contemporary applied arts, design and photography. With no boundaries between disciplines, visual arts dialogue with fine arts. Having assembled a collection of unique pieces, limited editions and installations that are both experimental and artistic, with a particular sensitivity for all things related to nature and minerality, the gallery organises five exhibitions and events each year in art and heritage venues (Maison Louis Carré, Yvelines, France, arch. Alvar Aalto; Ancienne Nonciature, Grand Sablon; Lempertz (former Leroy Frères gallery), Brussels, etc). Spazio Nobile also participates in Belgian and international fairs such as Art Brussels, Luxembourg Art Week, Art on Paper, Collectible Design Fair, PAD Paris and PAD London, Design Miami/Basel, NOMAD Capri / Saint Moritz, Unique Design Shanghai, etc. The gallery celebrates its 7th anniversary in 2023 and represents some twenty emerging and internationally renowned artists and designers, while promoting excellent craftsmanship and the cultures of East and West. Spazio Nobile also publishes TLMag True Living of Art & Design, created by Lise Coirier in 2008; through this bi-annual art and design magazine, available in print and online, the gallery shares its selection and its artistic and cultural commitment to collectible art and design. Spazio Nobile has been awarded the Homo Faber label of excellence and continues to explore its international project *Glass is Tomorrow*. In 2020, Spazio Nobile opened Spazio Nobile Studiolo, a permanent exhibition space, opposite the main gallery which is located on the beautiful floor of a 1920s house and the founders have extended the gallery experience to their villa in Tervuren, Spazio Nobile At Home.

SPAZIO  
NOBILE  
188  
*Contemporary Applied Arts, Design & Photography*

Salon | ART + DESIGN