



---

PAD Paris - Les Tuileries

29.3-2.4.2023

## *Jardin des Songes*

For the 25th anniversary of PAD Paris, we are very pleased to present the works of François Azambourg, Foyer Brisé, Sébastien Caporusso, Florence Coenraets, Marie Corbin, Vincent Fournier, Ernst Gamperl, Éva Garcia, Garnier & Linker, Kaspar Hamacher, Pao Hui Kao, Katherine Huskie, Päivi Rintaniemi, Bela Silva, Ann Beate Tempelhaug, Joost van Bleiswijk, Kiki van Eijk, Vera Vermeersch, Fabian von Spreckelsen, Quentin Vuong, Philipp Weber

SPAZIO  
— NOBILE

Contemporary Applied Arts, Design & Photography

PAD  
PARIS  
DESIGN + ART

---

## *Jardin des Songes*

À l'occasion du 25<sup>e</sup> anniversaire du PAD Paris, Spazio Nobile présente une exposition collective « Jardin des Songes » autour d'œuvres choisies de François Azambourg, Foyer Brisé, Sébastien Caporusso, Florence Coenraets, Marie Corbin, Vincent Fournier, Ernst Gamperl, Éva Garcia, Garnier & Linker, Kaspar Hamacher, Pao Hui Kao, Katherine Huskie, Päivi Rintaniemi, Bela Silva, Ann Beate Tempelhaug, Joost van Bleiswijk, Kiki van Eijk, VeraVermeersch, Fabian von Spreckelsen, Quentin Vuong, Philipp Weber. Ce jardin nous relie à notre imaginaire. C'est une invitation au voyage dans des rêves qui nous rapprochent de notre fragilité et notre sensibilité intérieures. Le symbolisme du jardin vient de loin, à la fois bucolique, mystérieux et au reflet de la civilisation à laquelle il se rattache. Il est de tout temps associé au Paradis terrestre, mais aussi au Paradis céleste et illustre l'état premier de l'humanité. C'est aussi cette image qui préside à la construction des jardins du Moyen Age. On peut y voir aussi le symbole de la culture intellectuelle face au désordre de l'ignorance. C'est au cœur des jardins de Babylone que coule la fontaine d'immortalité d'où dérive sans doute le mythe de la fontaine de Jouvence. En Extrême Orient, le jardin est une émanation du cosmos. Les artistes et les designers de Spazio Nobile ont créé des œuvres qui rendent hommage à ce jardin, qu'il soit encore à l'état de forêt, secret ou labyrinthique, féérique, au reflet des saisons, du calendrier lunaire ou solaire, ou une pure projection de leur vision et ressenti artistiques.

---

On the occasion of the 25th anniversary of PAD Paris, Spazio Nobile presents a group exhibition “Jardin des Songes” with selected works by François Azambourg, Foyer Brisé, Sébastien Caporusso, Florence Coenraets, Marie Corbin, Vincent Fournier, Ernst Gamperl, Éva Garcia, Garnier & Linker, Kaspar Hamacher, Pao Hui Kao, Katherine Huskie, Päivi Rintaniemi, Bela Silva, Ann Beate Tempelhaug, Joost van Bleiswijk, Kiki van Eijk, VeraVermeersch, Fabian von Spreckelsen, Quentin Vuong, Philipp Weber. This garden connects us to our imagination. It is an invitation to travel into dreams that bring us closer to our inner fragility and sensitivity. The symbolism of the garden comes from afar, at once bucolic, mysterious and a reflection of the civilization to which it is attached. It has always been associated with the earthly paradise, but also with the heavenly paradise and illustrates the first state of humanity. It is also the image that governs the construction of medieval gardens. It can also be seen as a symbol of intellectual culture against the disorder of ignorance. It is in the heart of the Babylonian gardens that the fountain of immortality flows, from which the myth of the Fountain of Youth probably derives. In the Far East, the garden is an emanation of the cosmos. The artists and designers of Spazio Nobile have created works that pay homage to this garden, whether it is still in its forest state, secret or labyrinthine, magical, reflecting the seasons, the lunar or solar calendar, or a pure projection of their artistic vision and feelings.



## François Azambourg (FR) Designer

---

François Azambourg explores the expressive potential of shaping materials and production processes, regardless of whether they are industrial or handmade, innovative or traditional. After training in electrical engineering in high school, he went on to study fine arts at the École nationale supérieure des Beaux-Arts (National Fine Arts grand school), and then applied arts at ENSAAMA – Olivier de Serres (National School for Applied Arts and Crafts), in Paris. With a technical and artistic education, François Azambourg's work is driven by research, an alliance between art and techniques, and a consideration for resources and streamlined design. His drawings are influenced by fabrication processes and the nature of the materials in use. While his production mainly focuses on designing furniture and lighting, François Azambourg also does scenography and theatre sets, and interior design for municipalities, hotels and individuals. Azambourg was a Laureate of the Villa Kujoyama in 2015, a recipient of the Grand Prix du Design de Paris in 2004, the Villa Médicis in 2003, the Prix de la Vocation of the

Marcel Bleustein-Blanchet Foundation in 1993, the Fondation de France in 1988 and the Museum of Decorative Arts competition in 1985. The VIA has given him support through five project assistance grants, one Carte Blanche in 2005 and several Labels. His work has been exhibited several times, including at the Festhalle Frankfurt, Salone del Mobile in Milan, Maison & Objet, Paris Design Week D'Days, MAD - Musée des Arts Décoratifs de Paris, Villa Noailles, Palais de Tokyo and MNAM – Centre Pompidou (National Museum of Modern Art). Some of his work is included in the collections of the FNAC (French National Fund for Contemporary Art), the Centre Pompidou, and the Musée des Arts Décoratif de Paris. François Azambourg has taught design for 20 years in several Parisian design schools such as École Boulle, École Camondo, and since 2003, ENSCI – Les Ateliers, the French national higher school of design, an interdisciplinary school for industrial design. Spazio Nobile presented in 2021 his first Solo Show *The Glass Pine : Blowing with nature* and represents him since 2019.

## *Vase Douglas Très Grand Modèle*

#215

2020-2021

Handblown glass

22 x 22 x 32 cm

Unique piece, numbered and signed

In collaboration with CIAV Meisenthal

€ 3 400



## *Vase Douglas Très Grand Modèle*

#133

2020-2021

Handblown glass

23 x 23 x 40 cm

Unique piece, numbered and signed

In collaboration with CIAV Meisenthal

€ 4 100



## *Vase Douglas Très Grand Modèle*

#217

2020-2021

Handblown glass

22 x 22 x 32 cm

Unique piece, numbered and signed

In collaboration with CIAV Meisenthal

€ 4 100





---

## Foyer Brisé (NL)

Artists, Designers

Established in 2022, 'Foyer Brisé' is a continuation of the autonomous designs of two anonymous designers. After working as a duo for fifteen years, they will continue the study on high-crafts in downfall under the name of 'Foyer Brisé'. 'Foyer Brisé' uses brokenness as a point of departure in their work. Worthless and faulty at first glance, the labor-intensive pieces of 'Foyer Brisé' are delicate collages of personal and shared experiences as seen from the perspective of their creator. Foyer Brisé presents objects that are between remains of what they were (or refer to) and a dream of what they can become. They carry a mix of design and art references (history of Chinese porcelain, Hella Jongerius, Martin Margiela i.c.w. Inge Grognard, Dries van Noten, etc) and private memories, captured in high crafts, Borgerhout aesthetics and broken litter. They have a mix of glazes and underglazes,

nail polish, white gold leaf, isolation blanket, colour pencils, concrete mineral paint and even Mon Chéri packaging. Each carafe has the title, number, date and time of creation that Foyer Brisé has written on it.



## *Echo*

2023  
Mixed media on porcelain  
27 x 16 x 16 cm  
Edition 5/20 +2 AP

€ 2 500

---



## *Echo*

2022  
Mixed media on porcelain  
27 x 16 x 16 cm  
Edition 6/20 +2 AP

€ 2 500

---



## *Echo*

2022  
Mixed media on porcelain  
27 x 16 x 16 cm  
Edition 7/20 +2 AP

€ 2 500

---



## *Echo*

2022  
Mixed media on porcelain  
27 x 16 x 16 cm  
Edition 8/20 +2 AP

€ 2 500

---



## *Echo*

2022  
Mixed media on porcelain  
27 x 16 x 16 cm  
Edition 9/20 +2 AP

€ 2 500

---





Sébastien Caporusso (BE)  
Designer

---

Passionate about the decorative arts, Sébastien Caporusso is a Belgian designer with Italian roots. With his furniture and lighting, mixing noble materials, organic shapes and unusual lines, Caporusso excels in producing objects of otherworldly beauty. He favours local materials: stone, brass, marble and other mineral materials sourced from the best Belgian craftsmen. Penetrating into the imagination of this interior architect and designer is not a linear journey, but a dreamlike interpretation of the materials. His talent lies in combining beautiful materials that create an unexpected scenography, an eclectic mix of objects and colours from his own universe. The symbolic forms of his work are characterised by organic outlines as well as majestic and unique cuts. Sébastien has a preference for rare, irregular and unique objects. “I use noble materials in my work, but never too ostentatious, that fit into the spaces

I am redesigning or when I am embellishing the furniture I have designed. The wear of the walls of a Venetian palazzo inspires me, as does a sheet of oxidized bronze. I like materials with a history, a past, that have lived, like the cobblestoned sidewalks of Rio or the Engawa planks in Kyoto. At every moment, it is about natural materials, soft colours and minerals, which give life to my projects.” states Caporusso. With his furniture and lighting, mixing noble materials, organic shapes and unusual lines, Caporusso excels in producing such a low table of otherworldly beauty for Spazio Nobile. Sébastien Caporusso is represented by Spazio Nobile since 2019.



# *Luna Rossa*

2023

Dining table / Desk

Coachella and Calacatta Viola Marbles

Saint Laurent Verde and Calacatta Viola and Bamboo

feet

287 x 152 x 70 cm

Unique piece

€ 33 000







## Florence Coenraets (BE)

### Feather Artist

---

Florence Coenraets initiates intimate dialogues with our material world and interrogates our relationship to objects and by extension, to our environment. She's been exploring and working with feathers for many years, a natural medium that fascinates her greatly. Born in Eupen, Belgium, she studied at Institut d'Architecture Victor Horta, worked in various architect offices then obtained her master's degree at Sint Lukas, School of Arts, where she developed a hybrid head pieces project. She then deepened her competences in millinery where she met feathers for the first time, a medium she's embraced ever since. She followed a featherwork course at the Académie des métiers d'art in Paris which led her to develop various artistic projects based on the physical and emotional particularities of feathers. Her work has been featured internationally, she was part of the exhibition a *World of Feathers* at the Volkenkunde Museum in Leiden and the Etnografiska Museet in Stockholm. Her headpieces were presented in various shows in Brussels such as Nationa(a)l expo store, Design September, Belgium is fashion,

as well as at Designsupermarket in Prague. In 2015, Florence Coenraets received the Weekend Fashion Award in the accessories category for her "coherent, fresh and singular" work. Her headpieces were presented during the défilé Cohort at WIELS. Her participatory project mixing millinery and photography was shown at the Maison des Cultures de Saint Gilles and in the Musée Royal d'Afrique centrale in Tervuren. Raw materials and the energy that emanates from them are the point of departure of her artistic explorations. By mixing in ancestral techniques into her practice Coenraets interweaves the sacred and the contemporary into singular pieces. Florence Coenraets is represented by Spazio Nobile since 2022.

## *Immersion V* *Bruissements*

2023

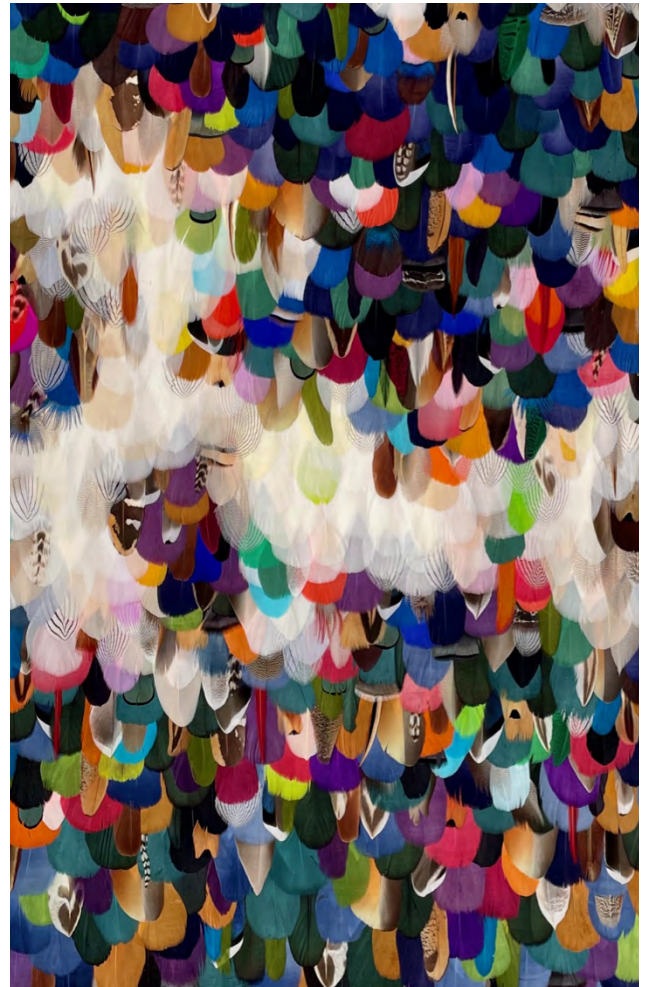
Feather Painting

Wooden cardboard, pheasant (Colchis pheasant, Lady Amherst pheasant, silver pheasant, golden pheasant, worshipped pheasant), guinea fowl, partridge, rooster (natural and dyed), goose (natural and dyed), duck, turkey (natural and dyed) and peacock feathers

125 x 86 cm

Unique piece framed in anti-UV plexiglas

€ 18 000





*Haïku*  
*Entre les lignes un courant ascendant*

2023

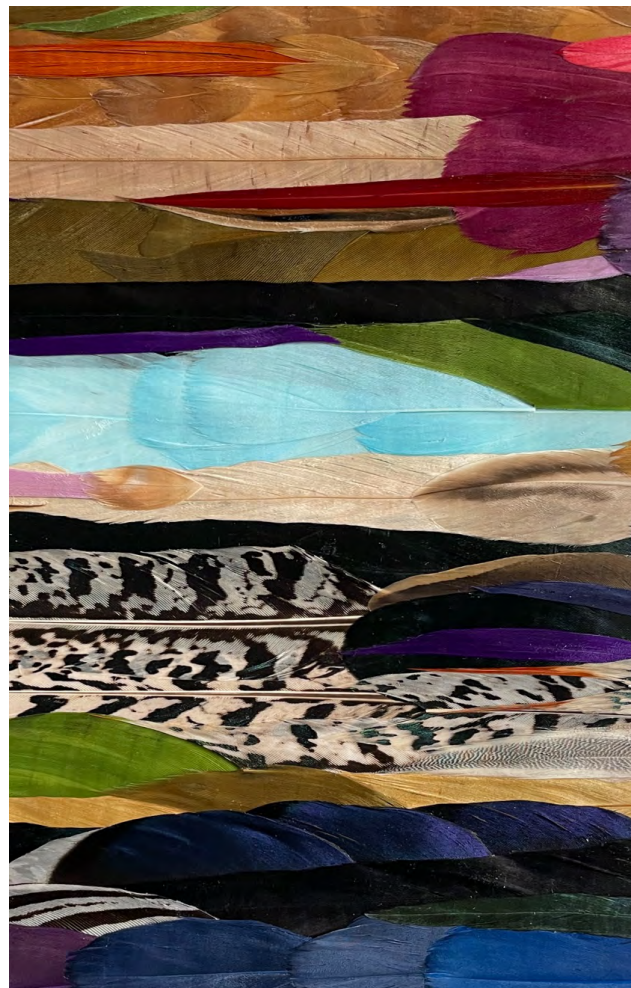
Feather Painting

Calico and non-woven interlining, pheasant (Lady Amherst pheasant, silver pheasant, golden pheasant), goose (natural and dyed), duck, turkey (natural and dyed) and dyed rooster feathers.

20 x 20 cm, walnut frame

Unique piece

€ 2 000



*Haïku*  
*La galaxie, la lumière et mon oeil*

2023

Feather Painting

Calico and non-woven interlining, pheasant (Colchis pheasant, silver pheasant, worshipped pheasant), goose (natural and dyed), duck and guinea fowl feathers.

20 x 20 cm, walnut frame

Unique piece

€ 2 000



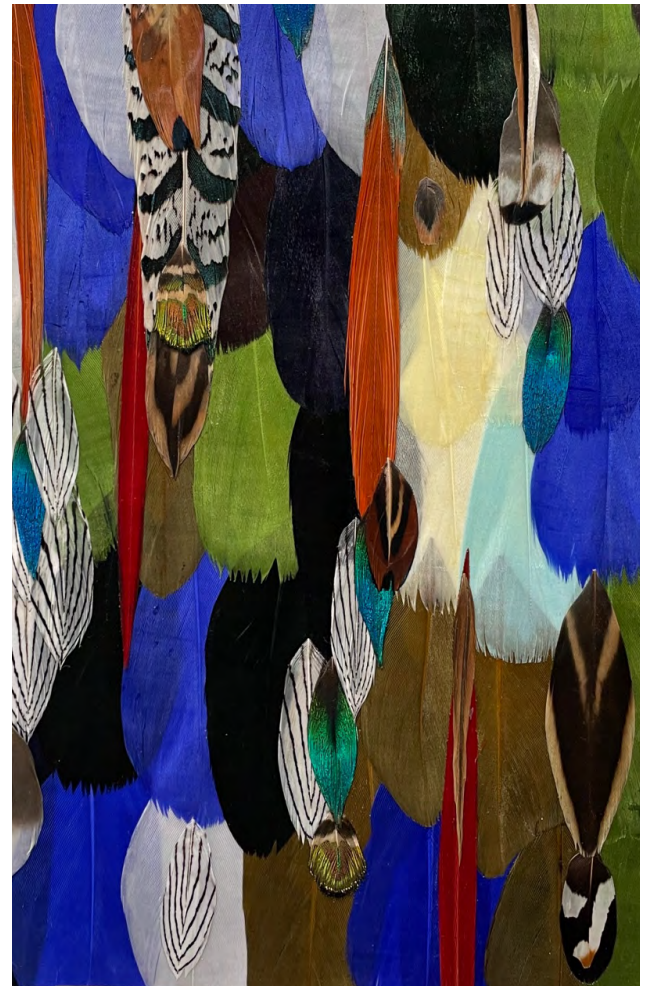
*Haïku*  
*Lames de fonds*  
*Surface rieuse*

2023

Feather Painting

Calico and non-woven interlining, pheasant (Lady Amherst pheasant, silver pheasant, golden pheasant, worshipped pheasant), goose (natural and dyed), duck and peacock feathers.  
20 x 20 cm, walnut frame  
Unique piece

€ 2 000





# Haïku

## *Sous mes pieds la rosée se promène*

2023

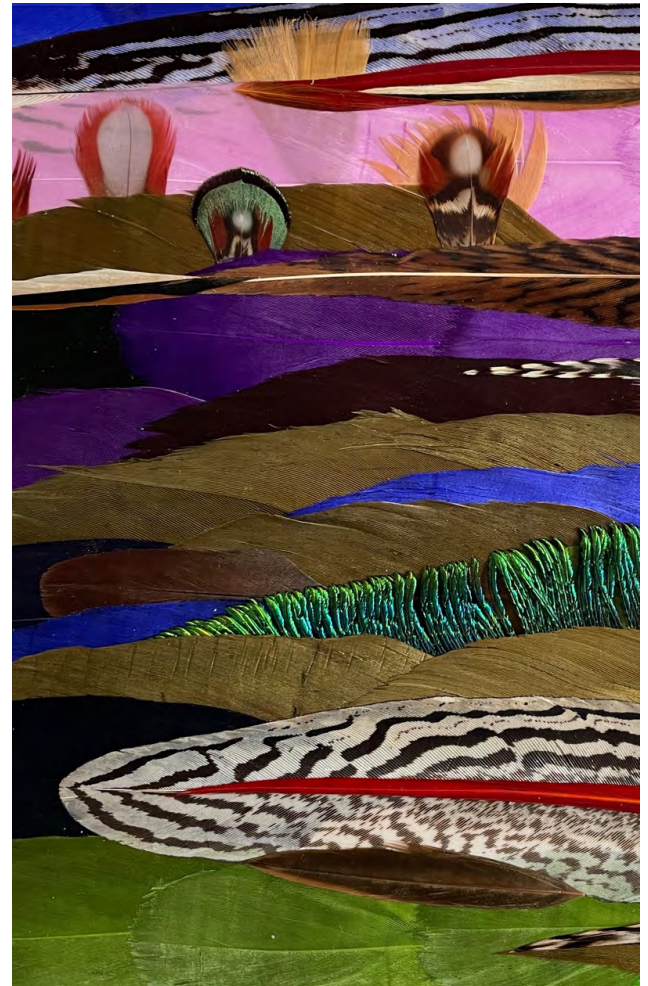
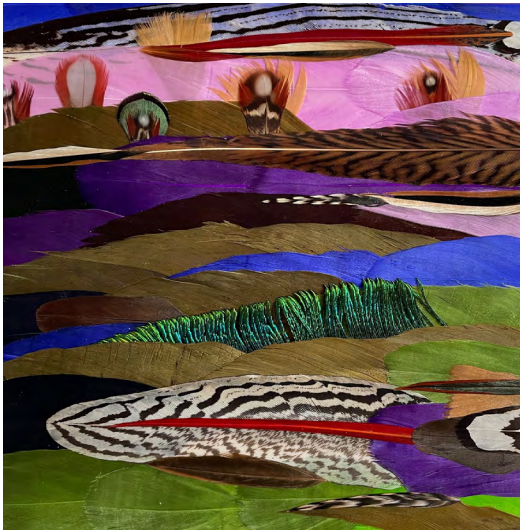
Feather Painting

Calico and non-woven interlining, pheasant (Colchis pheasant, Lady Amherst pheasant, silver pheasant, golden pheasant, worshipped pheasant), rooster, goose (natural and dyed), duck, turkey (natural and dyed) and peacock feathers.

20 x 20 cm, walnut frame

Unique piece

€ 2 000





## Marie Corbin (FR)

Architect, Scenographer

---

Ker-Xavier is a collective of French artists and architects. Marie Corbin, the group's representative, holds an ADE and HMONP diploma in architecture from ENSA Paris-Belleville. In 2006, she began her training as a scenographer in the museum design department of the Centre Georges Pompidou in Paris. From 2008, she enriched her museographic experience in the world of contemporary art by offering her production support services to the artists Anu Pennanen and Benoît Maire, before creating her own scenographies for the BPI of the Centre Pompidou, the IMEC or on the occasion of several public contract competitions for the MAM of the city of Paris and the Grand Palais. Between 2013 and 2016, she collaborated with set designers Maciej Fiszer and Laurence Fontaine for the Fondation Louis Vuitton, the LAM, the Quai Branly, the MuCEM, the Cinémathèque, the Louvre Lens... Ker-Xavier is a French design label run by architect Marie Corbin (b.1983) and artist Benoît Maire (b.1978). The label was created in Paris by 5 architects in 2011 and

established itself as a company called Ker-Xavier Sarl in 2018 in Bordeaux. Between 2011 and 2015, Ker-Xavier was mainly involved in exhibition design. In 2014, Marie Corbin worked with the French-Vietnamese artist Thu Van Tran on the Marguerite Duras exhibition for the Centre Pompidou in Paris, setting up a partnership and production follow-up in order to produce the artist's installation. In 2016, Benoît Maire was asked to design the scenography of photographer Julien Carreyn's work at the Crèvecœur gallery in Paris for the exhibition "Photographies du soir". This was the starting point for the creation of a line of furniture called "du soir". Ker-Xavier produces objects and furniture such as tables, chairs, stools, lamps and vases, based on an experimental workshop method; and is still involved in exhibition scenography with notably "Foncteur d'oubli"x at the Plateau Fonds Régional d'Art Contemporain in Paris at the end of 2019. Spazio Nobile represents Marie Corbin since 2020.

## *Vase Pierre*

2023

Soliflore Vase

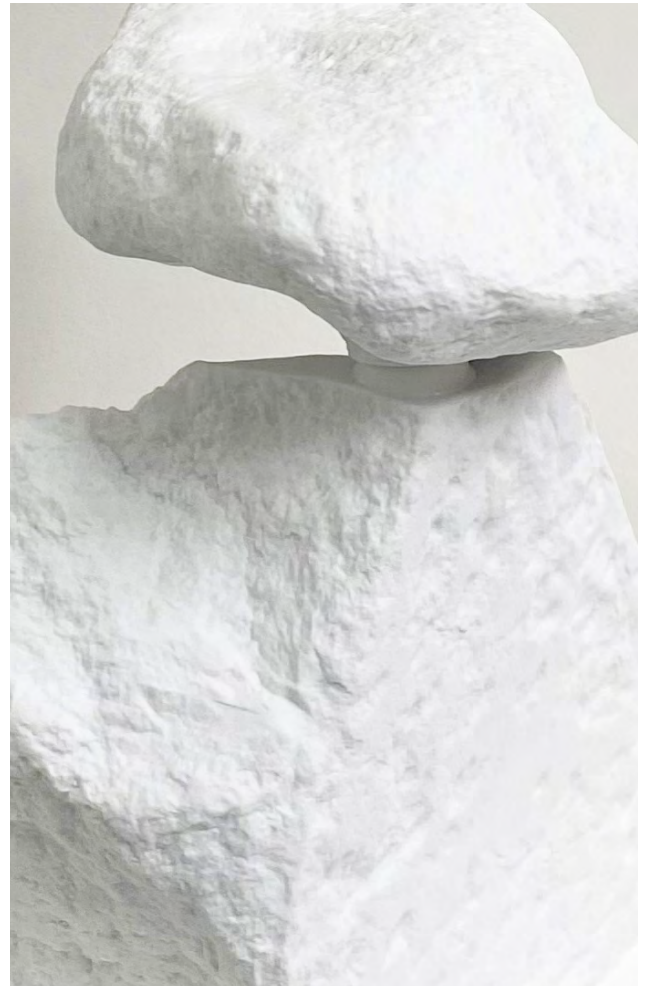
Limoges porcelain: sculptural part in unglazed porcelain with glazed and removable test tube

26 x 24 x 17 cm

Edition 8 + 2 AP for Spazio Nobile

Prototype made by CRAFT Limoges (France)

€ 3500



## *Vase Calme Indigo Or*

2022

Glazed Limoges porcelain, molten glass, 3rd fire  
gold decoration 10%

32 x Ø 21 cm

Unique piece signed by the artist

€ 1500

---



## *Vase Calme Indigo Or*

2022

Glazed Limoges porcelain, molten glass, 3rd fire  
gold decoration 10%

32 x Ø 21 cm

Unique piece signed by the artist

€ 1500

---





**Vincent Fournier (FR)**  
Artist, Photographer

---

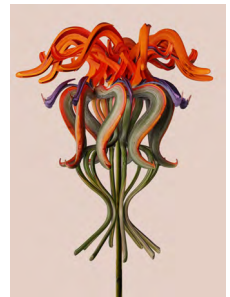
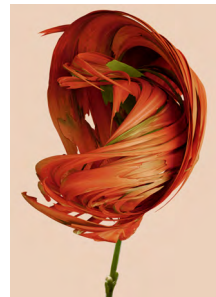
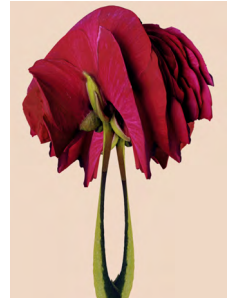
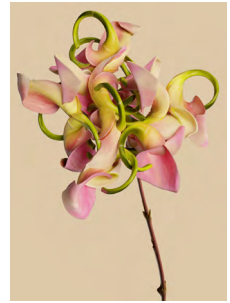
Vincent Fournier was born in 1970 and lives in Paris. After graduating with a sociology degree and a Masters in Visual Arts, he obtained a diploma from the National School of Photography in Arles in 1997. His works are regularly exhibited in international galleries and institutions, such as Les Rencontres d'Arles, Mori Art Museum (Tokyo), Musée des Arts Décoratifs of Paris, Fondation EDF in Paris, Centre d'Art Contemporain in Pontmain (France), Architekturforum Aedes in Berlin, Z33 House for Contemporary Art in Genk (Belgium), Netherlands Architecture Institute, Rotterdam, Centre de la Photographie in Geneva, Quai 1 Vevey in Switzerland, Diesel Gallery in Tokyo, 798 Space in Beijing. His pictures can also be found in public and private art collections such as the Metropolitan Museum, permanent collection (New York) LVMH Contemporary Art Collection in Paris, MAST Fondation in Bologna (Italy), The Schlumberger-Primat Collection, The Baccarat Art Collection in New York. Vincent Fournier has already collaborated with several brands for specific projects :

Baccarat, the Synthetic Flesh Flowers, for the new Baccarat Hotel in New York with the designers Gilles&Boissier, Diesel for the ISETAN Department Store in Tokyo with the Archeology of the Future project, Columbia Picture in the movie Spiderman 2 with Post Natural History, Le Bon Marché Department Store in Paris for the Brasilia series. For its first exhibition, Piano Nobile hosts "Post Natural History", presented in the format of a contemporary cabinet of curiosities. The showcase runs through a large universe, linking photography with 3D application. The result of a great attention to contradictions and the imponderable, Fournier's works are poetic and meticulous, freely nurtured by cinematographic and literary inspirations. Fascinated by science, architecture, technology and its mysteries, his installations explore all fictional potential. Post Natural History recounts the story of a voyage through time and projects a near and imaginary future. A subtitled "archaeology of the future", this exhibition mixes history and anticipation, memory and science fiction. It reveals a collection of creatures that are "beginning to appear", imagined through synthetic and cybernetic biology. Composed of three declinations around the possible transformation of the living world, the exhibition questions the relationships of man with nature and with technology, and emphasises the futility of vanity. The presentation, with "scientific" explanations accompanying images, paradoxically reinforces reality as well as fiction. Spazio Nobile will present his next Solo Show *Super Specimens : Sensations of the Extraordinary* (April 28th - July 20th) in parallel to his Solo Exhibition *Uchronie* at Musée de la Chasse et de la Nature in Paris (April-September 2023). The gallery represents Vincent Fournier since 2016.

# *Flora Incognita*

## The Reinvention of the Living

Flora incognita tells the story of a journey into a reinvented nature, in constant transformation. At once sculptures, architectures and portraits, these flowers of unknown beauty question our mutant and fluctuating identities.



## *Rosa Incognita*

2023  
Photograph  
Ink jet print on HR Ilfoflex Prestige  
90 x 65 cm  
Edition of 1/10 + 2 AP  
American box in wooden frame with an engraved brass  
plate

€ 7500



## *Scara Incognita*

2023  
Photograph  
Ink jet print on HR Ilfoflex Prestige  
90 x 65 cm  
Edition of 1/10 + 2 AP  
American box in wooden frame with an engraved brass  
plate

€ 7500



## *Dendratherma Incognita*

2023  
Photograph  
Ink jet print on HR Ilfoflex Prestige  
90 x 65 cm  
Edition of 1/10 + 2 AP  
American box in wooden frame with an engraved brass  
plate

€ 7500



## *Sabnjak Incognita*

2023  
Photograph  
Ink jet print on HR Ilfoflex Prestige  
90 x 65 cm  
Edition of 1/10 + 2 AP  
American box in wooden frame with an engraved brass  
plate

€ 7500





## *Sargalda Incognita*

2023  
Photograph  
Ink jet print on HR Ilfoflex Prestige  
90 x 65 cm  
Edition of 1/10 + 2 AP  
American box in wooden frame with an engraved brass  
plate

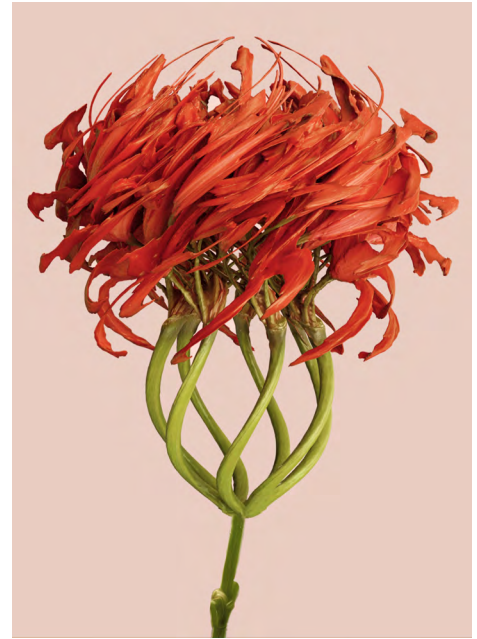
€ 7500



## *Undulata Incognita*

2023  
Photograph  
Ink jet print on HR Ilfoflex Prestige  
90 x 65 cm  
Edition of 1/10 + 2 AP  
American box in wooden frame with an engraved brass  
plate

€ 7500



## *Nerine Incognita*

2023  
Photograph  
Ink jet print on HR Ilfoflex Prestige  
90 x 65 cm  
Edition of 1/10 + 2 AP  
American box in wooden frame with an engraved brass  
plate

€ 7500



## *Strelitzia Incognita*

2023  
Photograph  
Ink jet print on HR Ilfoflex Prestige  
90 x 65 cm  
Edition of 1/10 + 2 AP  
American box in wooden frame with an engraved brass  
plate

€ 7500



# *Nerine Incognita*

2023  
Photograph  
Ink jet print on HR Ilfoflex Prestige  
90 x 65 cm  
Edition of 1/10 + 2 AP  
American box in wooden frame with an engraved brass  
plate

€ 7500





---

## Ernst Gamperl (DE)

Sculptor

His sculptures aren't simply turned on the lathe, they're the fruit of years of painstaking work with his preferred medium: wood. Over the past 20 years, Ernst Gamperl has studied its drying properties and their impact on the sculpture. He knows it is a give-and-take, a dialogue with the material; he can never impose a shape on it. This physical and conceptual challenge continues to spur him on. Curved edges and bulges, projections and indentations emerge out of the natural warping of the wood. They are part and parcel of the design, as are branches and irregular growth formations, and the fissures and fractures that he consciously repairs and controls. The immanent expressive power of the material and its grain, lines and colouring, its softness or hardness, its compact heaviness or paper-thin transparency, are underscored by his treatment of the surfaces: waxing and polishing, scrubbing out the streaks or carving filigree parallel grooves, contrasting smooth and shiny with rough-hewn and scarred. Pushing the boundaries of his own craftsmanship,

Gamperl was awarded the LOEWE Craft Prize in 2017, and since then has pursued a quest for even more essential and archaic forms and surfaces. His one-of-a-kind project, "Tree of Life", in which he transformed a tree into 67 beautifully wrought vessels that embody his excellence in woodturning and in experimental patinas, has been touring in Europe and in Asia (Korea) over the past two years. Spazio Nobile has represented Ernst Gamperl since 2020.



*12/2020//170*

2020

Turned maple, limed and bleached

97 x 37 x 37 cm

Signed and dated by the artist

€ 17 000



*13/2020//170*

2020

Turned maple, limed and bleached

70 x 30 x 30 cm

Signed and dated by the artist

€ 15 000



75/2022//180

2022

Turned oak wood and butterfly keys

81 x 43 x 37 cm

Unique piece

Signed and dated by the artist

€ 23 000





II6/2022//200

2022

Turned ash wood and butterfly keys

113 x 40 x 47 cm

Unique piece

Signed and dated by the artist

€ 25 000





Éva Garcia (FR)  
Artist

---

Éva Garcia was born in 1980 in the Dordogne; she lives and works in Paris. In 2010 she joined the engraving workshop of Paris Atelier, under the direction of Mireille Baltar. In 2013 she was awarded the Graver Maintenant prize. In 2014 she joined the Bo Halbirk workshop. 2019 marks a turning point in her artistic career with her first solo show at the Schumm-Braustein gallery in Paris. In 2020, the Académie des Beaux-Arts awarded her the Prix Frédéric et Jean de Vernon, in printmaking. Éva Garcia's practice is mainly centred on engraving, of which she uses all the techniques, including sugar, burin, point, and cradle, gradually favouring direct engraving. She offers us visions that are both ethereal and tangible, impressions of an experimental nature. What interests her is the image, which in its very essence is multiple, evolving from its inscription to its inevitable dispersion. Although she begins her work by incising a matrix, the artist plays with the principle of the print and its identical multiplication, by intervening on the print itself

or by working on the printing supports. It is not a question of variations in series but of repeated, transposed, multiple writings, operating a transfer of language. Through these games, these experiments, these interpenetrations of gestures, techniques and materials, through the formats which impose a physical investment of the whole body, the confrontation with the material is at the same time rough, harsh but also subtle. It is not surprising that the artist now opens her practice to painting and sculpture, always remaining at the crossroads of engraving, in a relationship of circularity. Spazio Mobile presented Éva Garcia's first Solo Show *Cette lumière peut-elle* in 2022. She is currently resident at the Fimenco Foundation. The gallery represents her since 2021.

## *No Lasting Form*

#1

2023

Varnish, typographic black ink, graphite color pencil and  
sanding on Fabriano paper

175 x 135 cm

Unique piece, framed and signed by the artist

€ 9 000





## Garnier & Linker (FR) Designers

Guillaume Garnier and Florent Linker are two French creators based in Paris. They aim at giving a contemporary design to rare materials and savoir-faire. All pieces are handmade unique or limited editions by French master craftsmen. As designers, they get their inspiration from decorative arts and sculpture, to create pure-shaped forms revealing their materiality. With their background in interior design, they conceive functional objects that meet contemporary interiors of enlightened collectors who seek art and design collectibles with a soul. They have created two singular collections for Spazio Nobile in Brussels, one is the Parisis lamps in plaster and alabaster and, another one is the molten glass *Diatomée* Sculpted Vases which appear like diatoms that are single-celled algae that live in houses made of glass. Inspired by these light-absorbing molecules which are the only organism on the planet with cell walls composed of transparent, opaline silica, they are ornamented by intricate and striking patterns of silica. On earth, diatoms are bringing us up to 50% of our oxygen and also feed the oceans, lakes and rivers. Garnier

& Linker have experimented this fascinating lost-wax casting technique mastered by French glass maker Olivier Fonderflick. Since 2020, Spazio Nobile has initiated artistic collaborations and projects with floral artists around *Diatomée* such as Ikebana master Jozef Preliš Seihō and Paris-based creator Arturo Arita, respectively on the exhibitions *Ikebana* at Collectible and *Call to the Wild* at Maison Louis Carré (arch Alvar Aalto) in Summer 2020 and for *Spazio Nobile at Home : Living Ikebanas* in 2022-23. Garnier & Linker are represented by Spazio Nobile since 2019.

# Diatomée

2018 - 2021  
Sculpture Vase, lost-wax cast glass  
30 x 10 x 10 cm  
ed. of 20 + 2 A.P. in a range of 20 crystal colors  
Unique pieces, random collection for Spazio Nobile

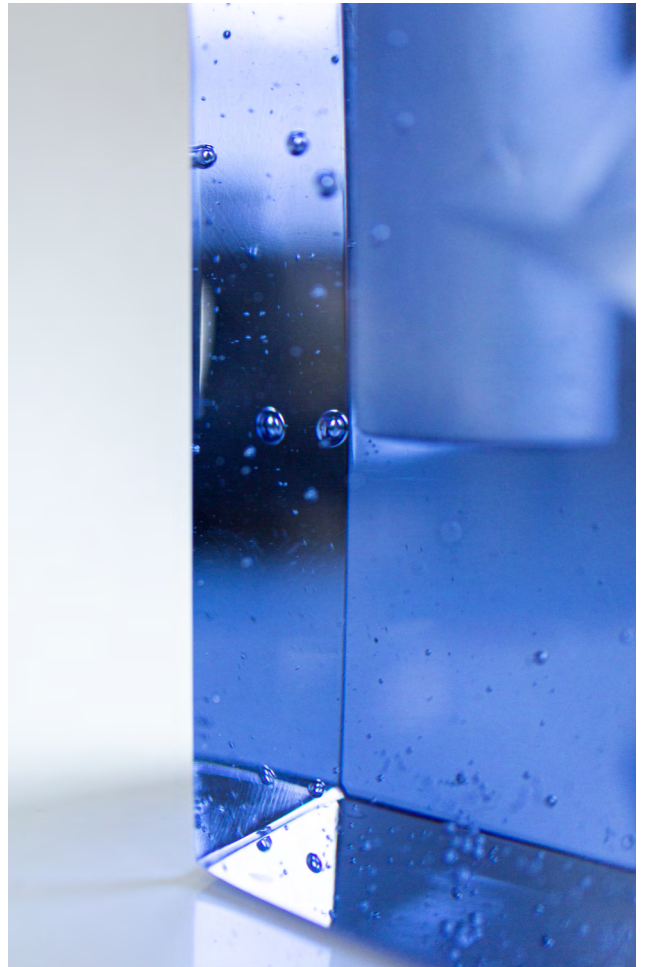
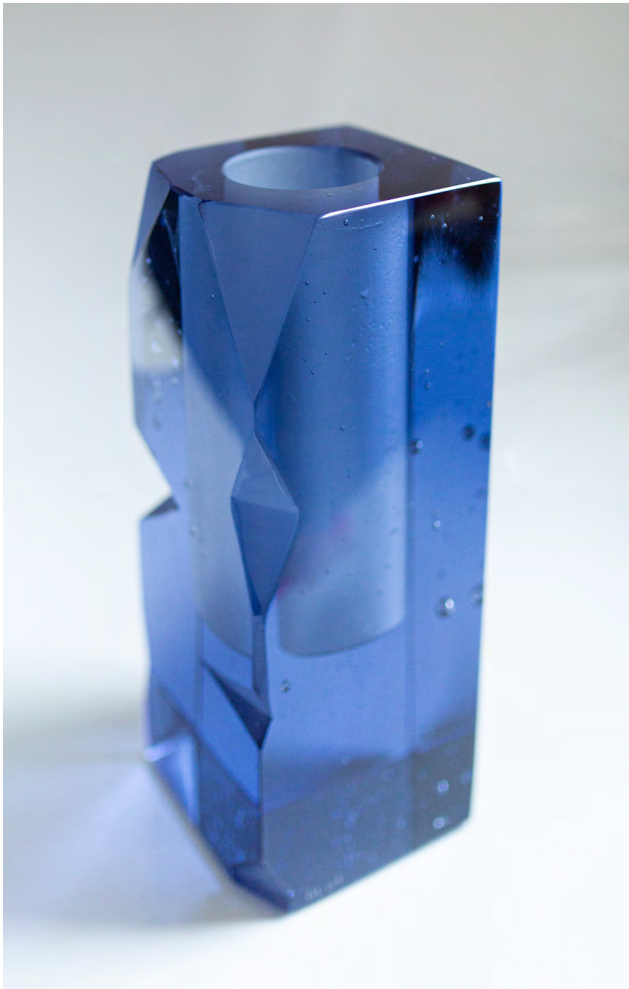
€ 3 800 each

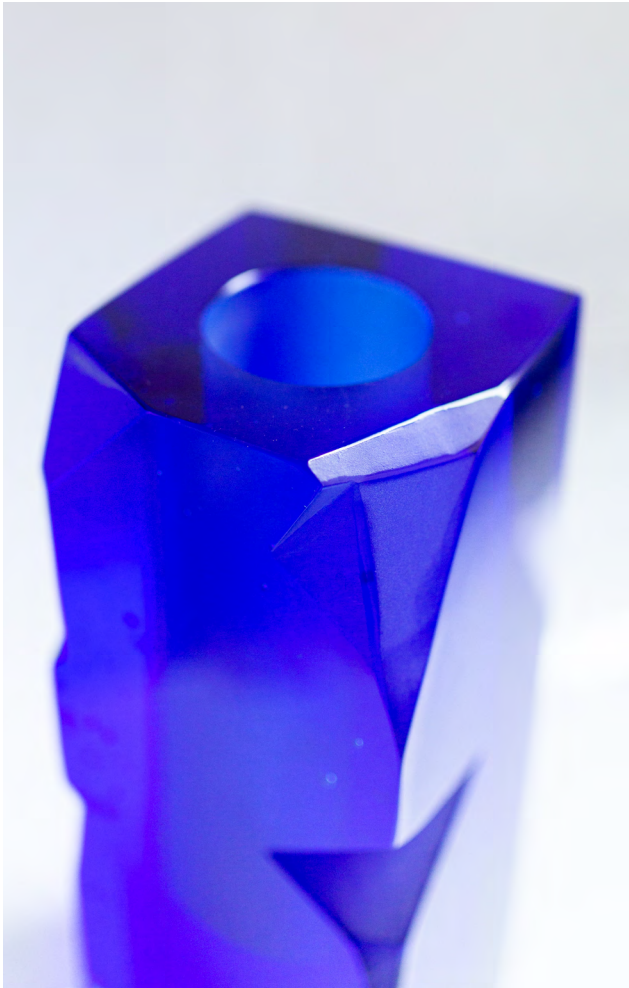


When the kiln is brought up to temperature (800 degrees Celsius /1450-1530 degrees Fahrenheit), the glass chunks melt and flow down into the mold. The lost wax process is very old and derives from a process for shaping bronze.

The original shape is moulded in foundry wax, then covered with clay which becomes an external mould. When everything is annealed, the mould hardens and the wax, by melting, is eliminated through a conical dripping hole made in the covering.

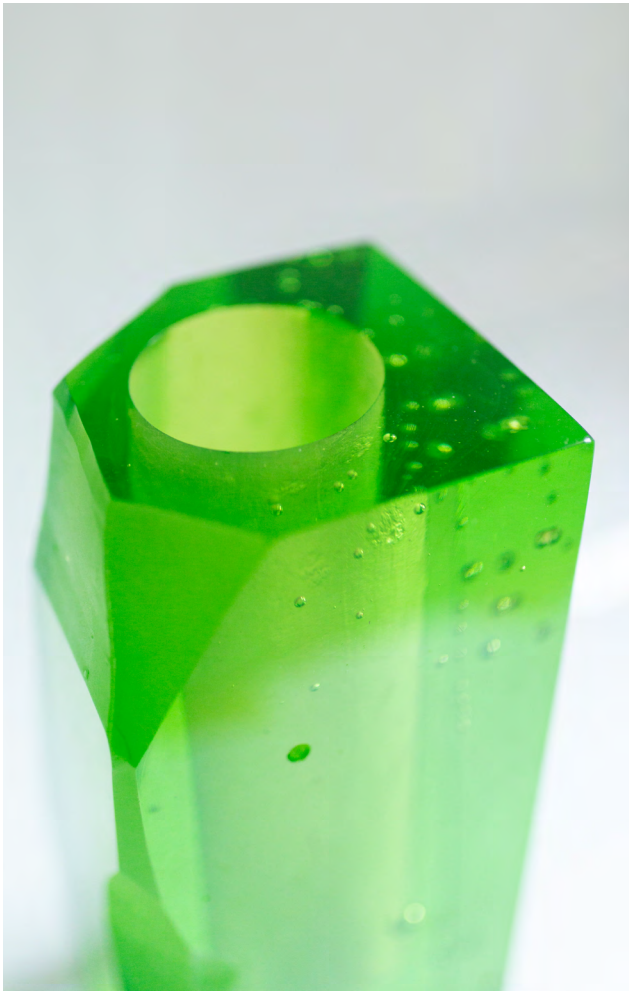
The space left free by the 'lost' wax is filled in with molten glass, which assume the form of the wax mould. The wax can even be eliminated by evaporation.





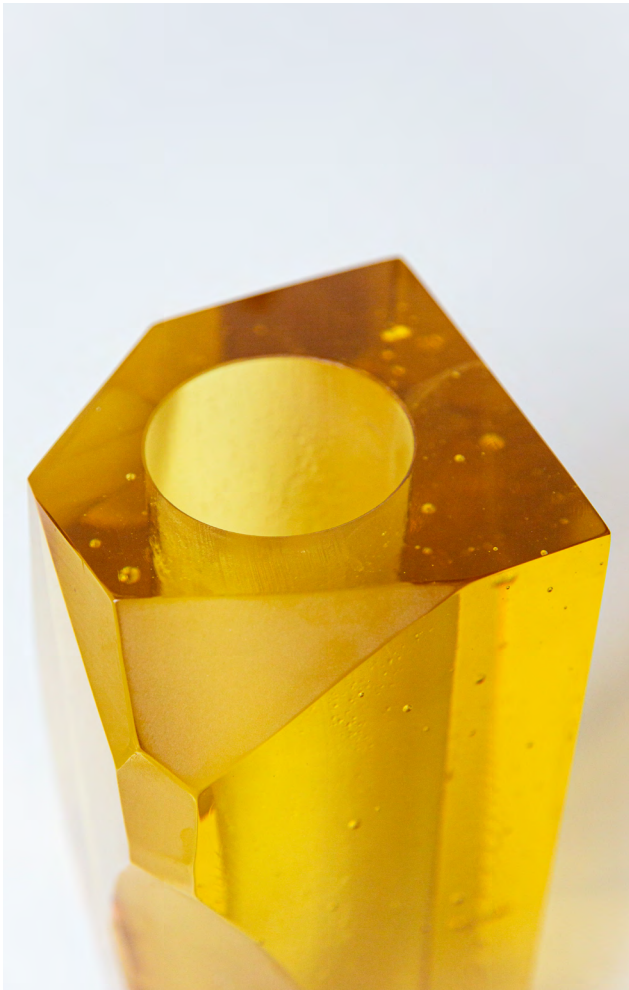












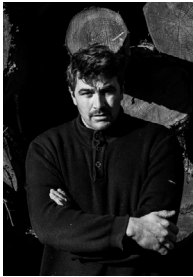












**Kaspar Hamacher (BE)**  
Sculptor, Artist & Designer

---

With a degree from the Academie Beeldende Kunsten in Maastricht, the Netherlands, Kaspar Hamacher, originally from Belgium's Eastern Cantons, takes nature as the starting point in his daily life as a sculptor and a designer of artistic furniture. Monoxyle purity blooms from sylvan beauty. Raised in woodlands by his forest ranger father, he has forged a unique and very personal path through the world of art and design, winding his way between sculpture and the contemporary applied arts. Far from the rush of our digital world, Kaspar Hamacher creates a close and unique connection with each fragment of trunk he sculpts, crafting unique stamped pieces out of his own creative energy. He resolutely focuses on the object in all its physical strength, more as a “*maker*” than a conceptual designer. His abilities with wood, as a living material, are the fruit of his energy and his imagination: whether working

with a tree stump or a piece of leather, for him it is essential to respect authenticity at every step of the creative process. In his design approach, which he has called “*Die Werkstatt*” (The Workshop) since his 2017 exhibition at Spazio Nobile, Hamacher always aims to create a piece that is both unique and personal, with a strong meaning and added soul. “*Le Sacre de la Matière*” reflects his authenticity, while “*Mother Earth*” is at the heart of his identity, the eponymous title of his solo exhibition at CID Hornu which ran from June to September 2021. Spazio Nobile represents Kaspar Hamacher since 2016.

## *Black Max 03*

2021  
Sculpted Chair  
Fire sculpted chiseled solid oak, waxed and oiled  
50 x 50 x 75 cm  
Unique piece stamped by the artist

€ 4500



## *Black Max 04*

2021  
Sculpted Chair  
Fire sculpted chiseled solid oak, waxed and oiled  
50 x 50 x 75 cm  
Unique piece stamped by the artist

€ 4500



## *Black Ausgebrannt*

2023

Sculptural Stools or Side tables

Fire sculpted solid oak, waxed, oiled

107 x 0 40 cm

Unique piece stamped by the artist

€ 5 000



## *Black Ausgebrannt*

2023

Sculptural Stools or Side tables

Fire sculpted solid oak, waxed, oiled

67 x 40 cm

Unique piece stamped by the artist

€ 3,500 each







---

## Pao Hui Kao (TW)

Artist, Designer

Pao Hui Kao studied Industrial Design at the Huaan University of Taipei. After four years working experience as a industrial designer and material researcher, she enrolled in the Master's program at the Design Academy Eindhoven where she received her Master of art in 2016. Her works shown great influences of innovated material, traditional crafts, social issue, ecorches. By making objects, sculptures and installations, her works emphasize on creating extraordinary aesthetics out of ordinary material and surrounding through continuous material experiments. The projects of Pao Hui Kao marrie the forces of nature to human artifacts. Her studio serves as ground for a constant research on experimental design, bringing higher meaning to manmade sculptural bodies and installations through their exposition to nature and its elements. This process of elaboration allows Pao Hui to

create a narrative where the natural and the artificial commune to form landscapes for the mind to explore the philosophical dilemmas that distress the human condition. Pao Hui Kao has created two collections for Spazio Nobile in 2020: *Paper Pleats* and *Lacquer Leaf*, in which she has experimented further with tracing paper, rice glue, Urushi lacquer paint and kintsugi. Spazio Nobile is representing Pao Hui Kao since 2019. Pao Hui Kao has been selected as part of the finalists for the LOEWE Craft Prize 2022. Her first Solo Show "*Twenty Five Seasons*" will be presented this upcoming Autumn at the gallery.

## *Red Urushi Paper Pleats Side Board*

2022

Tracing paper, rice glue, Urushi lacquer, red pigment

70 x 33 x 135 cm

Unique piece in a random collection

Signed and dated by the artist

€ 14 000









## *Red Urushi Paper Pleats Stool Low*

2023  
Tracing paper, rice glue, Urushi lacquer, red pigment  
45 x 0 32 cm  
Unique piece in a random collection  
Signed and dated by the artist

€ 2 200



## *Red Urushi Paper Pleats Stool High*

2023  
Tracing paper, rice glue, Urushi lacquer, red pigment  
60 x 0 32 cm  
Unique piece in a random collection  
Signed and dated by the artist

€ 2 500







## *Green Urushi Paper Pleats Stool Low*

2023  
Tracing paper, rice glue , Urushi lacquer, green pigment  
45 x 0 32 cm  
Unique piece in a random collection  
Signed and dated by the artist

€ 2 200

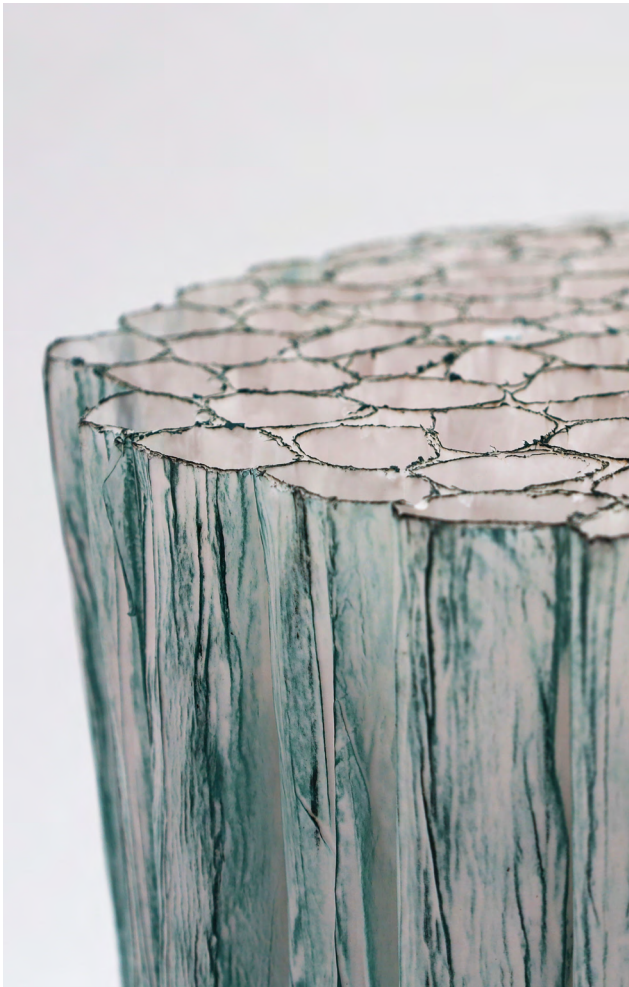


## *Green Urushi Paper Pleats Stool High*

2023  
Tracing paper, rice glue , Urushi lacquer, green pigment  
60 x 0 32 cm  
Unique piece in a random collection  
Signed and dated by the artist

€ 2 500





*Black Urushi Paper Pleats Stool Low*

2023  
Tracing paper, rice glue, Urushi lacquer, black pigment  
45 x ø 32 cm  
Unique piece in a random collection  
Signed and dated by the artist

€ 2 200



*Black Urushi Paper Pleats Stool High*

2023  
Tracing paper, rice glue, Urushi lacquer, black pigment  
60 x ø 32 cm  
Unique piece in a random collection  
Signed and dated by the artist

€ 2 500







## *Original Paper Pleats Stool Low*

2021  
Tracing paper, rice glue  
45 x 0 32 cm  
Unique piece in a random collection

€ 1200



## *Original Paper Pleats Stool High*

2021  
Tracing paper, rice glue  
60 x 0 32 cm  
Unique piece in a random collection

€ 1500



## *Original Paper Pleats Bench*

2022

Tracing paper, rice glue

35 x 130 x 29 cm

Unique piece in a random collection

€ 6 000





## Katherine Huskie (UK)

Artist, Glassblower

---

Katherine Huskie has been working with glass for over 10 years. Huskie started experimenting with glass at college and subsequently went to the University of Sunderland where she studied for a BA (Hons) in Glass and Ceramics. Huskie specialised in blown glass early on and since then it has become her passion. Glass blowing has taken Huskie all over the world including a year based in Australia where she worked with numerous different glass makers to expand and broaden her knowledge. The experience provided Huskie with the passion and determination to push her own glass designs. On returning to the UK she set up Devereux & Huskie Glassworks with James Devereux. They specialise in creating glass for designers and artists from the UK and overseas. Huskie has always been interested in pattern whether it is within nature, textiles or geometry. She is always searching for

new influences and how she can include the patterns in hot glass. Huskie was named Wimbledon Championship Artist 2018 alongside Nancy Sutcliffe. They collaborated to create 2 large scale glass works that are on display in the Clubhouse. In 2020 Huskie became a QEST scholar, she received a grant to allow her to continue learning the craft of Neon. Katherine Huskie is represented by Spazio Nobile Gallery since 2020. Huskie's work has a strong identity with form and pattern, whether it is technique or ascetic driven. Katherine Huskie is always searching for new influences and how she can incorporate the inspiration within hot glass. Huskie has travelled with her glass spending a year working in Australia learning new techniques and gathering experiences and ideas. Huskie's work was recently on view at the gallery and part of The International Exhibition of Glass Kanazawa 2022 at the Shinoki Cultural Complex, Ishikawa Prefecture, Japan. Katherine Huskie is represented by Spazio Nobile since 2019.

## *Ostreum in Fuschia*

2022

Sculpture vase

Hand blown and squeezed molten glass

20 x ø 30 cm

Unique piece in a random collection

€ 4.000



## *Ostreum in Mittle Blau*

2022

Sculpture vase

Hand blown and squeezed molten glass

20 x ø 30 cm

Unique piece in a random collection

€ 4.000



## *Echinus Aqua*

2021

Sculpture vase

Hand blown and squeezed hand blown glass

ø 32 cm

Unique piece

€ 4 500

---





## Päivi Rintaniemi (FI)

Artist, Ceramist

Päivi Rintaniemi graduated with a Master of Arts from the Aalto University in Helsinki, Finland. The varied art disciplines taught at the university enabled her to develop solid professional skills in both design and sculpture. After her studies, Rintaniemi concentrated mainly on designing and manufacturing everyday objects. She shows her Amfora creations at major international design shows. Sculpture has always been an important counterbalance for her design work. Rintaniemi's starting points for structuring her works of art are shape and dimension. Her pieces are characterised by her way of working the clay, which is also often a significant factor in the nature and narrative of her sculptures. Over the years, colour has been replaced by structured surfaces and earthy tones. Rintaniemi's artistic work is meditative, with an interaction between the material and the themes. Through her works, Rintaniemi strives to unveil her relationship with nature, and to let her audience appreciate the uniqueness and miracles of life. Päivi Rintaniemi's work has been recognised both nationally and internationally.

She received the Finnish designer award in 2008, and first prize at the International Competition of Contemporary Ceramic Art in Faenza, Italy, in 2013. She has participated in many art shows in Finland and abroad, and her works are found in Finnish national collections and museums, as well as in private collections. Spazio Nobile showed her work throughout the Finnish season "*Keep Your Garden Alive*" in 2019, and since then has represented her at art and design shows. Spazio Nobile represents Päivi Rintaniemi since 2020.

# *Ara*

2010

Hand built ceramic sculpture, stoneware clay with shamott

38 x 87 x 72 cm

Unique piece

Unique piece, signed by the artist

€ 15 000







# *Thesaurus*

2014

Hand built ceramic sculpture, stoneware clay with shamott

38 x 90 x 80 cm

Unique piece, signed by the artist

€ 16 000







## Bela Silva (PT)

Artist, Sculptor, Ceramist

Bela Silva was born in Lisbon, Portugal and studied at the Fine Arts Academy in Lisbon and Porto, Portugal, as well as at ArCo, Lisbon, Norwich Fine Arts in the UK, and The Art Institute of Chicago in the United States. She currently splits her time between Lisbon and Brussels. She has exhibited at Ann Nathan Gallery and Rhona Hoffman Gallery in Chicago, at Lisbon's Museu do Azulejo (Tile Museum), Museu Anastácio Gonçalves, Palácio da Ajuda and Fundação Ricardo Espírito Santo, as well as in various exhibitions in China and in Japan. She has participated in group shows in Belgium (Kleureyck, Designmuseum Gent, Lille 3000), Brazil, Spain, France (Biennale de Vallauris), and has run ceramics workshops in Japan and Morocco. She has been awarded residencies at Kohler, Wisconsin, USA, and at Fabrica Bordalo Pinheiro, Caldas da Rainha, Portugal. She has created several pieces of public art, including painted murals on tile for Lisbon's Alvalade subway station, and ceramic panels for Japan's Sakai Cultural Centre gardens and the João de Deus School in the Azores Islands. She created 12 large fantastical pieces in

pieces of public art, including painted murals on tile for Lisbon's Alvalade subway station, and ceramic panels for Japan's Sakai Cultural Centre gardens and the João de Deus School in the Azores Islands. She created 12 large fantastical pieces in 2017 for the gardens of the Fine Arts museum, while exhibiting her work that same year at the Museum of the Orient in Lisbon. Spazio Nobile has represented Bela Silva since 2017 and has dedicated her several exhibitions at the gallery and at international fairs worldwide, including the solo show *Despierta Corazón Dormido* in 2020 coupled with the release of her artist book, *Codex Mexico*. In 2021, Spazio Nobile launched three jewelry collections with the artist: "Mon Amour, Mexico", "Petalouda" with high-end Berlin-based fashion brand Rianna + Nina and "Four Seasons", wall sculpture jewelry to hang on the wall as 'ex-votos'. She is part with Spazio Nobile of *Next of Europe*, a selection of European "Living Treasures" curated by Jean Blanchaert & Stefano Boeri at Homo Faber, Fondazione Giorgio Cini, Venice, Italy in spring 2022. The gallery inaugurated a showcase with Bela Silva in Le Sablon Art District, in front of Les Minimes Baroque Church, which is open twice a year during B.A.S. (Brussels Art Square) in Brussels, in March and September. The gallery presented in 2022 the Duo Exhibition "*Tree of Life*" with the Belgian textile artist Vera Vermeersch. Bela Silva is represented by Spazio Nobile since 2017.

## *Une bouche pleine de baisers*

2023

Sculpture

Painted and glazed stoneware

16 x 95 x 26 cm

Unique piece, signed by the artist

€ 7500





## *Papagaio*

2023  
Sculpture  
Glazed stoneware  
40 x 55 cm  
Unique piece, signed by the artist

€ 8 000



## *Tropical*

2023  
Sculpture  
Glazed stoneware  
50 x 45 cm  
Unique piece, signed by the artist

€ 8 000





## Ann Beate Tempelhaug (NW)

Artist, Ceramist

---

Ann Beate Tempelhaug was born in Mosjøen, in northern Norway. Educated in the Arts and Crafts at the University of Bergen. Her work is collected by the National museum Oslo, and the Art museums in Bergen, Trondheim and Kristiansand. Among her recent solo exhibitions are KRAFT Gallery Bergen, Bo muldsfabriken Arendal, Agder Art Center and Arteriet Gallery in Kristiansand. Among the recent group exhibitions are the Art Fairs Collective New York and Collect London. Awarded commissions at the Universities of Kristiansand and Bergen. She has received several national grants, most recently the National Art Grant for 5 years. "As the Danish artist Per Kirkeby once said: "Landscapes are always about beauty and death." By taking the landscape as inspiration, my work connects to my own life and my memories," she states. Taking things one day at a time, Norwegian ceramic artist Ann Beate Tempelhaug has been creating large scale ceramic objects for over thirty years. Her freely shaped and sculpted ceramic objects are painted completely

by hand, on both their surface and borders, a testament to her curiosity and dedication to finding beauty in everyday colours and shapes. In her creative process, Tempelhaug proposes new ways of understanding how even the smallest transient moments can affect our larger context. The gallery will present her first Solo Show "*Nord*" in September to November 2023. Spazio Nobile represents Ann Beate Tempelhaug since 2020.

## *Ouvert*

Sculpture - Wall Installation  
2022  
Stoneware porcelain  
178 x 112 x 28 cm  
Unique piece, signed by the artist

€ 25 000









## Joost van Bleiswijk (NL)

### Designer

Joost van Bleiswijk is a designer, artist and teacher who gives great value to the process of making. He grew up in Delft, and studied at the Design Academy of Eindhoven, where he met his future partner, Kiki van Eijk and founded the studio in 2001 to become one of the most accomplished names of Dutch design. Today he runs Studio Thinking Hands, one of the core studios within Design Academy Eindhoven's BA program. A genuine fascination for the construction of the object often revealed in the outcome is the starting point of his creative process. The workshop is where Joost engages with the experience of designing as an intensely physical act. The creative process unfolds in a quite instinctive and gestural way. Its wide range of work extends from fine furniture to large scale installation, from architecture to accessories, from lighting to ceramics. His work often references iconic designs such as family clocks, cupboards, high-backed chairs and chess sets; bringing these designs into a contemporary setting has marked Joost's work throughout his career. From his early

famous No Glue No Screw collection, to the Mechanic and Protopunk series, Joost has always used bold shapes and strong lines to create designs striving for audacious creativity. His international collaborations include brands like Moooi, Bernhardt Design, Nodus and Omnidecor among a series of private collectors, companies, and institutions such as The Rijksmuseum, Centraal Museum Utrecht, Design Academy Eindhoven, Zuiderzee Museum, Noord Brabants Museum and the North Sea Jazz festival. He has exhibited in private galleries and museums around the world but it's his workshop with the sound of making and building that gives him the real thrill. In Spring 2022, Kiki van Eijk & Joost van Bleiswijk's first Duo Show, "Serendipity" took place at the gallery. Spazio Nobile is representing Joost van Bleiswijk since 2022.

## *Light on the Block*

#01

2022

Table Lamp

Mixed metals; brass, copper, aluminium,

12 and 24v led light

47 x 44 x 15 cm

Unique piece

€ 8900



## *Light on the Block*

#02

2022

Table Lamp

Mixed metals; brass, copper, aluminium,

12 and 24v led light

42 x 18 x 10 cm

Unique piece

€ 7500



# *Light on the Block*

#03

2022

Table Lamp

Mixed metals : brass, copper, aluminium,

12 and 24v led light

21 x 40 x 9 cm

Unique piece

€ 7500



## *Light on the Block*

#4

2022

Candle Holder

Mixed metals : brass, copper, aluminium,

17 x 11 x 22,5 cm

Unique piece

€ 4 800

---



## *Sketch Cabinet*

2020

Long Cabinet with multiple stands

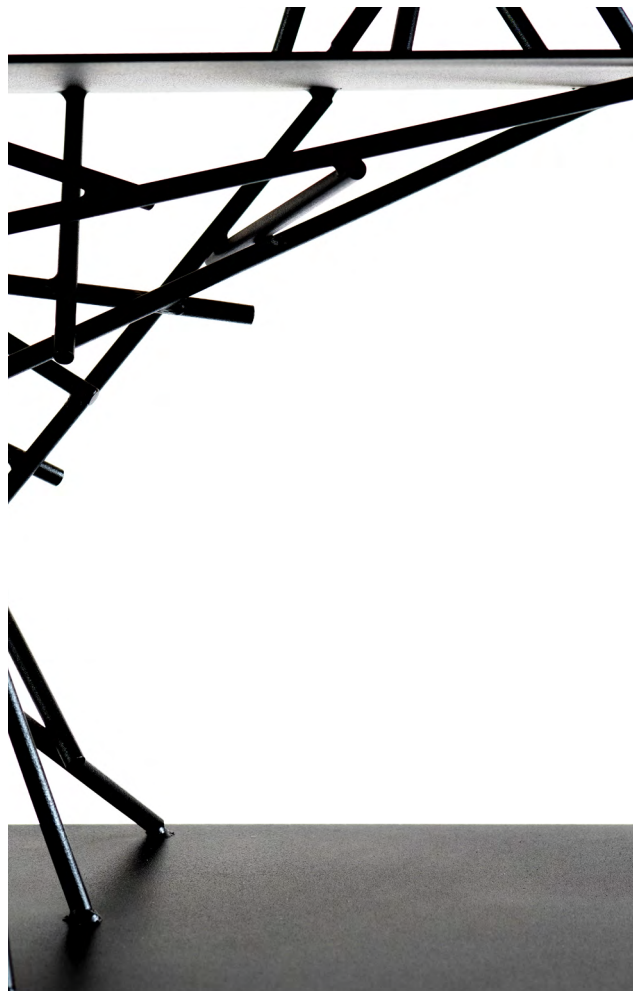
Black powder coated metal

204 X 42 X 101 cm

Unique in a random collection

€ 9 200







## Kiki van Eijk (NL)

### Designer

---

Kiki van Eijk grew up in the Netherlands where she spent her youth immersed in nature daydreaming and drawing. She is now one of the most accomplished names in the world of Dutch design. Her interest in product design developed at the Design Academy Eindhoven where she met her future partner, designer Joost van Bleiswijk. Her wide range of work extends from installations to furniture, from lighting to textiles, ceramics or glassware. Her independent sculptural work has been presented in museums, galleries and fairs worldwide, including Basel, London, Paris, Milan, New York, Tokyo and Rome. Inspired by the smallest details of the everyday and by the forms of nature, Kiki's world is whimsical and colorful, lyrical and personal, yet refined by a rigorous attention to the process and skillful craftsmanship. Regardless of the scale of the work, the handmade and human touch remains at the heart of her practice and reinforces an intuitive and forward-thinking approach to design in the 21st century. Her collaborations include brands as Hermès, Google, Saint- Louis, Cor Unum,

Bisazza, Häagen-Dazs, Serax, Bernhardt Design and Nodus. In recent years she has collaborated with companies and institutions like Coachella, Studio Edelkoort Paris, Audax Textile Museum, Zuiderzee Museum, Noord Brabants Museum, Design Academy Eindhoven, Venice Projects, Rijksmuseum, Centraal Museum Utrecht and private collectors. Spazio Nobile presented from May 18th to September 4th, Kiki van Eijk & Joost van Bleiswijk's Duo Show « *Serendipity* ». The gallery represents Kiki van Eijk since 2021.



## *Structuring Chaos*

by Kiki van Eijk

Kiki van Eijk is a designer known for her whimsical and poetic approach to design. Her latest body of work, titled “Structuring Chaos” explores the theme of order and chaos, and the tension between the two. The collection is a series of wall hanging, produced in collaboration with the Textile Lab of TextielMuseum (Tilburg, NL) which van Eijk describes as “an attempt to capture chaos and bring it into a structured form.” The piece is composed of what at first instance look like threads of confusing appearance, they swirl and dance in unpredictable ways. Slowly order is created by introducing an anchoring force: Raku ceramic elements holding sailing knots and giving support and structure to the countless threads. Just as a sailor uses knots to secure their boat to a dock or anchor in rough waters, Kiki van Eijk uses the concept of knots to represent the act of anchoring ourselves in life,



to help us stay centered and grounded amidst the chaos of a confusing world. The ceramic elements helping to give order are made by Kiki van Eijk with Raku, a traditional Japanese firing technique, used to make unique and irregular shaped pieces. Raku ware is traditionally made by hand and fired at a low temperature, resulting in a distinctive crackled glaze. She developed the robes consisting in a mix of different color yarns using a handmade process that is as time consuming as meditative. The colorful ropes (passementerie) are conductors of harmony, emerging from the above friction. Overall, “Structuring Chaos” is a thought-provoking and visually striking collection that speaks to the human desire for control and order in an unpredictable world.



## *Structuring Chaos*

#Orange Tangle

Tapestry, Wall Hangin Installation

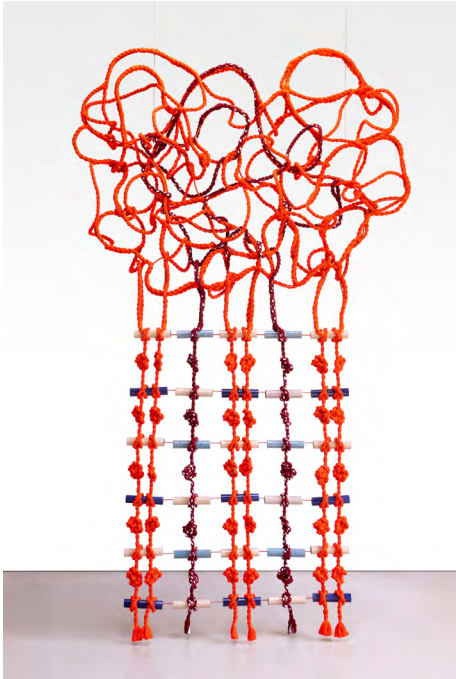
2023

Knots, passementerie and raku ceramics

316 x 183 cm

Unique in a random collection

€ 33 000





## *Freeform Lamp Pink*

Free standing lamp

2022

Hand casted and glazed ceramics, metal, LED and earthenware

190 x ø 60cm

Unique in a random collection

€ 7400



## *Raku Collection* by Kiki van Eijk

Raku is a Japanese low fire process that dates as far back as the 16th century. Pots are taken from the kiln while they are still red hot to be placed in a container full of materials catching fire. Kiki is rethinking this historic technique and by trial and error she is coming to contemporary design. Firing Raku in her studio garden adds another experiential layer to the process and gives her a deeper understanding about the possibilities and usage of this ancient technique. Working closely to the fire (1000 degree celsius) is a very physical act that carries on these smoked, final objects. There are so many variables within the process of Raku Firing, that each outcome is a surprise even to the artist and no object will ever look the same. Keeping alive an intuitive approach to the making, Kiki cultivates the richness of the sensory experience.



## *Raku Celadon*

#Sculptural vase 2  
Small Green & Black  
2022  
Raku Clay, glazed  
19,5 x 0 27,5 cm  
Unique piece in a random collection

€ 1 200



## *Raku Celadon*

#Sculptural vase 1  
Large Green, Yellow & White  
2022  
Raku Clay, glazed  
50 x 0 15,5 cm  
Unique piece in a random collection

€ 1 400



## *Raku Black*

# Sculptural vase 4  
Small Black  
2022  
Raku Clay, glazed  
20 x ø 14 cm  
Unique piece in a random collection

€ 800

---



## *Raku Black*

# Sculptural vase 5  
Very Large Black  
2022  
Raku Clay, glazed  
64 x ø 29 cm  
Unique piece in a random collection

€ 2 900

---







Vera Vermeersch (BE)  
Textile Artist

---

Vera Vermeersch, tapestry weaver and artist, trained as an art historian and as tapestry restorer at IRPA (Royal Institute for Cultural Heritage), was one of the founders of the Oudenaardse Huis Lalaing, which restored old tapestries in the mid-1980s. In 1989 she opened her own studio in Ghent, Belgium, specializing in contemporary tufted tapestries for floors and walls. Vermeersch creates her own designs, but also collaborated with some other local and international artists. For example, she has transposed works by Maarten van Severen, Tjok Dessauvage, Roger Raveel, Fred Bervoets, Johan Tahon, Volker Albus, Pjeroo Roobjee and Sofie Lachaert into tufted tapestries. She also collaborated with members of her artistic family, including her sculptor father José Vermeersch, her brother Rik Vermeersch and her cousin, painter Pieter Vermeersch. At present, she exclusively conceives and makes

her own creations inspired by her travels, Italian landscapes, and details from antique tapestries and old masters. This artistic approach always implies a critical, meticulous and layered reading, interpreting and re-interpreting of the given subject to sublimate it in a composition of which she holds the secrets, the color palette, the interweaving of threads and the genius of the material. She is a master at translating the virtuosity and poetry of the original design into tapestries. Her new lyrical and intimist tapestries around *Tree of Life* inaugurate a new body of hand-tufted works, inspired by the day and night shadows and lights that she observes and that appear in the landscape of the Piedmont Valley that surrounds her countryside house, *La Palude*. The gallery presented in 2022 the Duo Exhibition *Tree of Life* with the Portuguese textile artist Bela Silva. Vera Vermeersch is represented by Spazio Nobile since 2021.

## *Tu sei come una terra*

Wall Installation Diptych

2023

Handtufted tapestries, wool and fluoacryl

260 x 85 cm each

Unique pieces, signed and dated by the artist

€ 30 000 - € 15 000 each





## Fabian von Spreckelsen (DE)

Sculptor & Artist-Designer

A graduate of the Academie Beeldende Kunsten in Maastricht, the Netherlands, German-born artist Fabian von Spreckelsen is now based in the Netherlands. He cultivates a deep fascination for nature, passed down from his biologist father, who guided Fabian on the discovery of the delightful world of living organisms. This relationship and interaction between a constructed environment and unspoiled nature has steered his artistic instincts. Fabian von Spreckelsen is captivated by the links between humans and the natural elements surrounding them, and in his sculptural designs, he continuously interprets nature as a powerful force, requiring respect more than protection. The resulting strong and radical artwork draws inspiration from flora and fauna in their abstract geometries, with both strength and beauty in their simplest, sometimes abstract forms. The lines of his

work are clear-cut, producing visual effects that are simultaneously minimal and maximal. With his sculptural approach, he creates unique and bespoke pieces with a specific personality; the variety of his works reflects the diversity of nature and its connection with profound human values. He aims for a balance between arithmetical design, craftwork and artistic freedom, while always working with a respect for the environment and harmony with his surroundings. His recent monumental sculpture project, "Freddy", in Corten steel, takes him in a new, more conceptual direction, that he also translates into his new collection of seven cabinets that combine weathered iron and tanned leather, reflecting the stages of his life in a direct extension of the artwork *The Soul Portrait* which was show at the first edition of *Le Sacre de la Matière*. Spazio Nobile has represented Fabian von Spreckelsen since 2017. His last Solo Exhibition *Soul Memories* took place at Spazio Nobile Studiolo this past winter.

## Books

2021  
Eroded steel and tanned leather cabinet  
190 x 20 x 35 cm  
Edition 1/5+2 AP  
Stamped by the artist

€ 11 000





## Quentin Vuong (FR)

Designer

---

Quentin Vuong is a designer-scenographer whose aesthetic approach seeks to compose with matter, texture and form in order to create emotions. He uses pure, raw and even primitive forms, which he interprets and isolates thanks to a clever play on photographic composition and drawing. His sources of inspiration are ancient architecture, medieval fortifications or Venetian Gothic and the natural landscapes that surround them. From his experience acquired at the design department of La Fabrica in Treviso, he has retained the appeal of innovative scenographies dedicated to events marking the news of luxury brands, such as Veuve Clicquot during the Salone del Mobile in 2016. As of 2018, he puts his creative flair at the service of the production agency Back of the House. Together they conceive meticulous and radical design sets for Jil Sander, Oamc, Courrèges, Tom Brown and Acne studios. His experimental quest between noble materials and artisanal techniques is always at the center of his creations. Quentin Vuong produces delicate objects and custom-

made furniture for his clients such as SÂR Studio, Please do not Enter, Ars Fabricandi or Haviland. Today, it is in his studio at Villa Belleville that he indulges himself the most by designing unique pieces, mirrors, armchairs or light reflectors. He infuses his design sensibility, his research on the expression of time in space through objects and his knowledge of materials. Quentin Vuong works and composes on a variety of projects, from scenography to fashion shows, fashion boutiques, furniture and gallery pieces. He is developing a new collection of mirrors in collaboration with Barbini Specchi Veneziani in Murano exclusively for Spazio Nobile. The gallery represents him since 2021 and will present his first Solo Show in 2024.

## *Mercure Mirror M15*

2021

Hand carved massive oak, epoxy resin, brown and rocc  
white gold leaves

70 x 55 x 40 cm

Unique piece

Signed by the artist

€ 5 600



## *Votive Stool I*

2023

Hand carved massive oak, massive beech covered with cold metallization and metal nails

40 x 40 x 45 cm

ed. 1/8 +4AP

Signed by the artist

€ 5 200



## *Votive Stool II*

2023

Hand carved massive oak, massive beech covered with cold metallization and metal nails

40 x 40 x 45 cm

ed. 1/8 +4AP

Signed by the artist

€ 5 200





## Philipp Weber (DE)

### Designer

German creative Philipp Weber's holistic methodology melds his keen craft-led sensibility and affinity for humanism. Unaffected by the saturated trends that drive the design industry, the young designer delves deep into different subject matter. He approaches each topic from a comprehensive set of vantage points: the history and analysis of established manufacturing processes to the integration of seemingly disparate yet surprisingly appropriate associations. Graduated of Design Academy Eindhoven and University of Arts Berlin, he anchors and translates his unhurried, discursive explorations into tangible concepts and functional forms. These accessible applications push beyond the previously accepted limitations of age-old techniques and in turn, suggest ways in which to ensure their survival. It is no wonder that his chosen mediums tend to be glass, coal byproduct, cork, and textile. Though the designer frames his projects as thought-provoking referential, experimental, and expressive statement pieces, the new material properties they introduce have the most impact.

As the co-founder and creative director of Analog, a commercial venture developed through Berlin Glassworks, Weber has been able to put this unique praxis-based approach to good use. His interest in subverting traditional modes of production and research, now also incorporates a desire to explore new unconventional business models. Weber's first exhibition with Spazio Nobile was in 2017 as part of *Season IV-Crystallized*, with his experimental projects *A Strange Symphony* and *From Below* which was exhibited at CID-Hornu, Belgium, within the exhibition *At the Coalface, Design in a post-carbon age*, until 8 January 2023. Weber has presented, part of the show *Threads of Nature* in 2021 his vision of glass and lighting, launching a new bespoke lighting collection for the gallery, *Filigree*, with grotesque black and refined white canes. Spazio Nobile represents Philipp Weber since 2020.



## *Filigree White*

2021

Hand blown glass lighting chandeliers

Various dimensions

Each glass element is unique

€ 12 000 (5 pendants - € 2 500 each)



## *Filigree*

Weber presents his vision of glass and lighting, launching a new bespoke lighting collection for the gallery, *Filigree*, with grotesque black and refined white canes. The filigrana style originated on the island of Murano in the mid-16th century and spread rapidly to other parts of Europe where the *façon de Venise* glass was produced. This project falls perfectly in line with Spazio Nobile's long-running interest in glass and its project, *Glass is Tomorrow*.



*À propos des artistes et des œuvres présentées /  
About the artists and their featured works*

François Azambourg (FR)  
*Douglas Très Grand Modèle*

---

Au cœur des Vosges du Nord et sous le souffle de talentueux maîtres verriers sont nés les vases sculpturaux *Douglas* du créateur français François Azambourg qui est mis à l'honneur au MAD Paris à l'occasion de son exposition personnelle : « Légèretés manifestes » jusqu'au 2 juillet 2023. Il les a dessinés en toute spontanéité, dans l'instant donné et dans la danse de l'atelier, tel un prestidigitateur suspendu à l'échelle de son esprit rêveur, inventeur dans l'âme. Pins, sapins, épicéas, mélèzes, cèdres... la famille des pinacées est universelle. Elle est d'ailleurs très présente sur ce territoire où la manufacture verrière du Centre international d'Art verrier (CIAV) continue à en sublimer les ramages. Célébrant la grandeur d'un paysage s'épanouissant entre Rhin et Moselle aux confins de l'Alsace et de la Lorraine, le designer devient l'artiste et le chef d'orchestre d'une chorégraphie hypnotique.

François Azambourg (FR)  
*Douglas Très Grand Modèle*

---

In the heart of the Vosges du Nord and under the breath of talented master glassmakers, the *Douglas* sculptural vases of French designer François Azambourg were born. They are being honoured at MAD Paris on the occasion of his solo exhibition: "Légèretés manifestes" until July 2, 2023. He drew them spontaneously, in the moment and in the dance of the studio, like a magician suspended on the scale of his dreamy mind, an inventor at heart. Pines, firs, spruces, larches, cedars... the Pinaceae family is universal. It is also very present in this region where the glass factory of the Centre international d'Art verrier (CIAV) continues to sublimate its branches. Celebrating the grandeur of a landscape that blossoms between the Rhine and the Moselle on the borders of Alsace and Lorraine, the designer becomes the artist and conductor of a hypnotic choreography.

## Foyer Brisé (NL)

### *Echo*

---

Les créations de Foyer Brisé sont de délicats collages d'expériences personnelles et partagées, vues du point de vue de leur créateur. *Echo*, une nouvelle série de pièces uniques dans une édition aléatoire pour Spazio Nobile, se situe entre les vestiges de ce qu'ils étaient ou de ce à quoi ils font référence... et le rêve de ce qu'ils pourraient devenir. Ces carafes en porcelaine contiennent un mélange de références en matière d'art et de design (histoire de la porcelaine chinoise, Hella Jongerius, Martin Margiela i.c.w. Inge Grognard, Dries van Noten, etc.) et de souvenirs privés, capturés dans l'artisanat, l'esthétique de Borgerhout et la récupération de pièces cassées. On y trouve un mélange d'émaux et de sous-émaux, de vernis à ongles, de feuilles d'argent, de couvertures d'isolation, de crayons de couleur, de peinture minérale...

## Foyer Brisé (NL)

### *Echo*

---

The creations of Foyer Brisé are delicate collages of personal and shared experiences, seen from the point of view of their creator. *Echo*, a new series of unique pieces in a random edition for Spazio Nobile, lies between the remnants of what they were or what they refer to... and the dream of what they could become. These porcelain vessels contain a mix and match of art and design references (history of Chinese porcelain, Hella Jongerius, Martin Margiela i.c.w. Inge Grognard, Dries van Noten, etc.) and private memories, captured in the craftsmanship, Borgerhout aesthetic and salvage of broken pieces. There is layers of enamels and under-glazes, nail varnish, silver leaf, insulation blankets, coloured pencils, mineral paint...

Sébastien Caporusso (BE)

*Luna Rossa*

---

Dans la collection *Intermezzo*, la table de salle à manger ou bureau *Luna Rossa* du créateur Sébastien Caporusso combine la noblesse de deux pierres naturelles qui s'épousent l'une l'autre : les marbres Coachella et les deux inserts en forme de lune en Calacatta Viola. Les pieds en marbre Saint Laurent Verde et en lattes fines de bambou et de Calacatta Viola lui confèrent une élégance singulière tel un voyage en Italie entre palais et paysages somptueux. Le plateau de cette table a été réalisé en collaboration avec Van Den Weghe (BE). D'autres pièces uniques de cette collection font l'objet de commandes à façon, chaque création portant sa signature, en lien avec la beauté et l'exception des pierres sélectionnées et façonnées pour le projet.

Sébastien Caporusso (BE)

*Luna Rossa*

---

In the *Intermezzo* Collection, the *Luna Rossa* dining room table or desk by the interior architect and designer Sébastien Caporusso combines the nobility of two natural stones that marry each other: the Coachella marbles and the two moon-shaped inserts in Calacatta Viola. The legs in Saint Laurent Verde marble and in fine bamboo and Calacatta Viola slats give it a singular elegance, like a journey to Italy between palaces and sumptuous landscapes. The table top was made in collaboration with Van Den Weghe (BE). Each unique pieces in this collection are bespoke, each creation bearing its own signature, in line with the beauty and exceptionality of the stones selected and shaped for the project.

Florence Coenraets (BE)

*Immersion*

---

En continuité de ses premières peintures de plumes, *Immersion V* prend de l'amplitude en sublimant dans un grand format les plumes naturelles et teintées dans l'atelier de l'artiste : plumes de faisan, faisan de Colchide, faisan de Lady Amherst, faisan argenté, faisan doré, faisan vénéré, pintade, coq, oie, canard, dinde, perdrix, paon et perruche... La palette picturale empruntée par Florence Coenraets met la composition en mouvement et le regard prend son envol dans ce tableau où s'assemblent un duvet de couleurs et de textures volatiles. Les quatre plus petits formats ont été baptisés « haïkus » et sont tels ces poèmes courts japonais, des moments suspendus qui célèbrent l'impermanence de l'existence.

Florence Coenraets (BE)

*Immersion*

---

Following on from her first feather paintings, *Immersion V* expands by sublimating natural and dyed feathers in the artist's studio in a large format: pheasant feathers, Colchis pheasant, Lady Amherst pheasant, silver pheasant, golden pheasant, worshipped pheasant, guinea fowl, cockerel, goose, duck, turkey, partridge, peacock and budgerigar... The pictorial palette used by Florence Coenraets sets the composition in motion and the eye takes flight in this painting where a fluff of colours and volatile textures come together. The four smallest formats have been called "haikus" and are like these short Japanese poems, suspended moments that celebrate the impermanence of existence.

Marie Corbin (FR)  
*Pierre & Medicis*

---

La pierre comme fondation porte une signification symbolique à travers les âges et est liée à un site spécifique et à une narration au reflet de la pratique de Marie Corbin, à la fois architecte et scénographe, co-fondatrice avec Benoît Maire du tandem Ker Xavier. Le *Vase pierre* a été conçu en collaboration avec le CRAFT de Limoges et n'est qu'un début de collection qui viendra s'étendre avec le temps. Outre le *Vase pierre*, les vases *Medicis* de Marie Corbin offrent un décor abstrait qui peut être considéré comme un hommage à l'antique avec un sens du drame et de la sophistication. Le 3<sup>e</sup> feu or accentue la force de chacune de ses créations émaillées de manière très picturale.

Marie Corbin (FR)  
*Pierre & Medicis*

---

The stone as a foundation carries a symbolic meaning through the ages and is linked to a specific site and a narrative that reflects the practice of Marie Corbin, both architect and scenographer, co-founder with Benoît Maire of Ker Xavier. The *Vase pierre* was designed in collaboration with the CRAFT in Limoges and is just the beginning of a collection that will expand over time. In addition to the *Vase Pierre*, Marie Corbin's *Medicis* vases offer an abstract décor that can be seen as a tribute to the antique with a sense of drama and sophistication. The 3<sup>rd</sup> gold fire accentuates the strength of each of her pictorially glazed creations.

Ernst Gamperl (DE)

12 & 13/2020//170 - 75/2022//180 &  
116/2022//200

---

Les sculptures en bois tourné du créateur allemand Gamperl, creusées jusqu'à la peau la plus fine de l'arbre, donnent l'impression d'une forêt aux essences, patines et oxydations uniques. De forte présence à la fois visuelle et tactile, elles révèlent le visible dans l'invisible, en référence à la culture japonaise du vide – « U-Tsu-Wa » - qui signifie contenant, vide, univers. Ouvrant sur une culture méditative qui unit l'Orient et l'Occident, Ernst Gamperl atteint le niveau d'une culture universelle de l'art. L'œil découvre le culte du divin dans la nature, où les contenants deviennent les réceptacles de l'âme.

Ernst Gamperl (DE)

12 & 13/2020//170 - 75/2022//180 &  
116/2022//200

---

The turned wood sculptures of the German artist Gamperl, carved down to the finest skin of the tree, give the impression of a forest with unique species, patinas and oxidations. With a strong visual and tactile presence, they reveal the visible in the invisible, in reference to the Japanese culture of emptiness - «U-Tsu-Wa» - which means container, void, universe. Opening up a meditative culture that unites East and West, Ernst Gamperl reaches the level of a universal culture of art. The eye discovers the cult of the divine in nature, where containers become the receptacles of the soul.



Éva Garcia (FR)  
*No Lasting Form #1*

---

La pratique d'Éva Garcia est axée sur la gravure dont elle emploie l'ensemble des techniques. Son nouveau grand format *No Lasting Form #1* combine le vernis, l'encre noire typographique, le crayon de couleur graphite et le ponçage sur un papier Fabriano très épais. Dans un paysage jonché d'ombres et de lumières, d'obscurité et de clarté, les formes et les volumes gravés et peints à la gouache de l'artiste Éva Garcia épousent le papier. La fragilité qui émane de son œuvre en mouvement révèle cette présence incertaine et parfois étrange de notre corps et de sa connexion avec la nature. Les « feuilles frêles » dont parle Rainer Rilke nous rattachent à ce territoire qui est le nôtre, à ce paysage que l'homme construit dans un cheminement vers l'autre, « sur le chemin et le pré » qui lui offrira un cadre et une meilleure appréhension de la réalité. En attente entre deux mondes, il y a le mouvement qui donne vie, l'ouverture et les traces si bien représentées par les incursions de l'artiste faites dans le papier. Les encres de gravure lui permettent de faire des retraits, et la gouache, des appositions sur ses gravures. Le geste devient l'élan vital d'une âme en quête de l'autre, le rocher muet ou la forêt obscure sont quant à eux la personnification du temps et de l'espace inscrite en nous.

Éva Garcia (FR)  
*No Lasting Form #1*

---

Éva Garcia's practice is centred on engraving, of which she uses all the techniques. Her new large-format print *No Lasting Form #1* combines varnish, black typographic ink, graphite pencil and sanding on very thick Fabriano paper. In a landscape of light and shadow, darkness and clarity, the forms and volumes engraved and painted with gouache by the artist Éva Garcia embrace the paper. The fragility that emanates from her work in movement reveals the uncertain and sometimes strange presence of our body and its connection with nature. The "frail leaves" spoken of by Rainer Rilke link us to this territory that is ours, to this landscape that man constructs in a journey towards the other, "on the path and the meadow" that will offer him a framework and a better understanding of reality. Waiting between two worlds, there is the movement that gives life, the opening and the traces so well represented by the artist's incursions into the paper. The etching inks allow her to make withdrawals, and the gouache, appositions on her engravings. The gesture becomes the vital impulse of a soul in search of the other, the mute rock or the obscure forest are the personification of time and space inscribed in us.

Garnier & Linker (FR)

*Diatomée*

---

Guillaume Garnier et Florent Linker ont créé en duo à Paris les vases sculpturaux *Diatomée* en pâte de verre pour Spazio Nobile qui évoquent les diatomées, ces algues unicellulaires qui vivent dans des maisons en verre. À l'image de ces molécules qui absorbent l'oxygène et la lumière et qui sont le seul organisme de la planète dont les parois cellulaires sont composées de silice transparente et opaline. Sur terre, les diatomées nous apportent jusqu'à 50% de notre oxygène et alimentent également les océans, les lacs et les rivières. Le duo Garnier & Linker a expérimenté cette fascinante technique de la cire perdue, maîtrisée par le verrier français Olivier Fonderflick (Fonderie de Verre). Depuis 2020, Spazio Nobile a initié des collaborations artistiques et des projets avec des artistes floraux autour de cette collection unique (Arturo Arita, Jozef Prelis Seihô...)

Garnier & Linker (FR)

*Diatomée*

---

Guillaume Garnier and Florent Linker have created in their Paris studio the sculptural vases *Diatomée* in molten glass for Spazio Nobile, which evoke diatoms, the single-celled algae that live in glass houses. Like these oxygen and light absorbing molecules, they are the only organism on the planet whose cell walls are made of transparent, opaline silica. On earth, diatoms provide up to 50% of our oxygen and also feed the oceans, lakes and rivers. The duo Garnier & Linker experimented with this fascinating lost wax technique, mastered by French glassmaker Olivier Fonderflick (Fonderie de Verre). Since 2020, Spazio Nobile has initiated artistic collaborations and projects with floral artists around this unique collection (Arturo Arita, Jozef Prelis Seihô...).

**Kaspar Hamacher (BE)**

*Ausgebrannt, Burnt Inner Ausgebrannt, Max Chairs, Der Black Stein*

---

Sculpteur et designer du mobilier artistique *Ausgebrannt, Burnt Inner Ausgebrannt, Max Chairs, Der Black Stein...*, Hamacher installé dans les Fagnes belges travaille le bois comme un matériau vivant. Ses créations sont le fruit de son énergie et de son imagination. En travaillant avec des souches d'arbres, il est essentiel pour lui de respecter l'authenticité à chaque étape du processus de création. La pureté monoxyle s'épanouit dans la beauté sylvestre.

**Kaspar Hamacher (BE)**

*Ausgebrannt, Burnt Inner Ausgebrannt, Max Chairs, Der Black Stein*

---

Sculptor and designer of the artistic furniture *Ausgebrannt, Burnt Inner Ausgebrannt, Max Chairs, Der Black Stein...*, Hamacher, who lives in the Belgian Fens, works with wood as a living material. His creations are the fruit of his energy and imagination. Working with tree stumps, it is essential for him to respect authenticity at every stage of the creative process. Monoxyle purity flourishes in sylvan beauty.

## Katherine Huskie (UK)

*Echinus, Ostreum*

---

Les deux collections *Echinus* et *Ostreum* sont nées de l'amour de Katherine Huskie pour la manipulation du verre à chaud et de ses qualités tactiles. Soufflée bouche et pincée à chaud, chaque sculpture est inspirée des coquilles d'oursins ou des coquilles de moules que l'on peut trouver sur les rochers de la côte britannique. Leur texture ondulante l'a inspiré dans ses gestes de maître verrière où chaque morceau de verre est appliqué individuellement sur la surface et dicte ainsi la forme finale de chacune de ses pièces uniques aux couleurs profondes et chatoyantes. Ses sculptures peuvent aussi devenir des vases pour des bouquets stylisés.

## Katherine Huskie (UK)

*Echinus, Ostreum*

---

The two collections *Echinus* and *Ostreum* were born from Katherine Huskie's love of handling hot glass and its tactile qualities. Mouth blown and heat pinched, each sculpture is inspired by the sea urchin shells or mussel shells found on the rocks of the British coast. Their rippling texture has inspired her master glassmaking where each piece of glass is individually applied to the surface and thus dictates the final shape of each of her unique pieces with their deep, shimmering colours. Her sculptures can also become vases for stylised bouquets.

Pao Hui Kao (TW)

*Paper Pleats & Lacquer Leaf Green – Red – Black – Original*

---

Pao Hui Kao a créé deux collections pour Spazio Nobile depuis 2020, dans lesquelles elle a expérimenté plus avant le papier calque, la colle de riz, la peinture de laque Urushi et le kintsugi. Sa première exposition solo « 25 Seasons » sera présentée à l'automne 2023 à la galerie. *Paper Pleats Original & Urushi* et *Urushi Lacquer Leaf*, sont deux collections issues de cette longue phase d'expérimentation auxquelles ont été ajoutées la colle de riz et la laque Urushi. Ses procédés artistiques sont à la fois rudimentaires et sophistiqués et remontent à plusieurs siècles. Finaliste du LOEWE Craft Prize 2022, Pao travaille avec des matériaux utilisés depuis très longtemps, en innovant à partir de ce qui existe et en repoussant les limites vers une culture plus contemporaine de l'objet.

Pao Hui Kao (TW)

*Paper Pleats & Lacquer Leaf Green – Red – Black – Original*

---

Pao Hui Kao has created two collections for Spazio Nobile since 2020, in which she has further experimented with tracing paper, rice glue, Urushi lacquer paint and kintsugi. Her first solo exhibition “25 Seasons” will be presented in autumn 2023 at the gallery. *Paper Pleats Original & Urushi* and *Urushi Lacquer Leaf*, are two collections from this long phase of experimentation to which rice glue and Urushi lacquer have been added. Her artistic processes are both rudimentary and sophisticated and date back centuries. A finalist for the LOEWE Craft Prize 2022, Pao works with materials that have been used for a very long time, innovating from what exists and pushing the boundaries towards a more contemporary object culture.

Vincent Fournier (FR)  
*Flora Incognita*

---

La fleur est un végétal qui se déploie tout en délicatesse et majesté. Les photographies créées par l'artiste et photographe Vincent Fournier en sont des projections imaginaires, qu'il définit comme une uchronie, éponyme du titre de son exposition solo au musée de la Chasse à Paris d'avril à septembre 2023. Elles subliment notre propre jardin de l'âme en jouant des plis et replis d'une anamorphose. La corolle se déploie telle une robe virevoltante, une ivresse de la métamorphose. Son image devient sa propre fiction et plonge le spectateur dans une danse tourbillonnante tel un jardin des délices, celui-ci faisant référence à la célèbre peinture du Primitif flamand Jérôme Bosch qui avec d'autres peintres de son époque ont dessiné les premiers paysages de l'humanité, entre croyance, réalité et utopie. Vincent Fournier ouvre son exposition personnelle à la galerie fin avril 2023 *Super Specimens : Sensations of the Extraordinary*.

Vincent Fournier (FR)  
*Flora Incognita*

---

The flower is a plant that unfolds with delicacy and majesty. The photographs created by the artist and photographer Vincent Fournier are imaginary projections of it, which he defines as an uchrony, eponymous to the title of his solo exhibition at the Musée de la Chasse in Paris from April to September 2023. They sublimate our own garden of the soul by playing with the folds of anamorphosis. The corolla unfolds like a twirling dress, an intoxication of metamorphosis. Its image becomes its own fiction and plunges the viewer into a swirling dance like a garden of delights, referring to the famous painting of the Flemish Primitive Hieronymus Bosch who, along with other painters of his time, drew the first landscapes of humanity, between belief, reality and utopia. Vincent Fournier opens his solo exhibition at the gallery at the end of April 2023 : *Super Specimens: Sensations of the Extraordinary*.

## Päivi Rintaniemi (FI)

*Ara, Thesaurus*

---

Les céramiques sculpturales de l'artiste finlandaise Päivi Rintaniemi sont méditatives et mystiques, faisant jaillir la clarté et la luminosité, tout en faisant écho aux rayonnements nordiques. De forme organique, pliée, fendue, *Ara* est une métaphore du rapport sensible et spirituel de l'homme face à la nature. Le grès chamotté prend vie sous le doigté délicat dont jaillissent des surfaces rondes et harmonieuses, comme des coquillages fêlés, des chrysalides, des nids ou des corolles. À travers ses sculptures, Rintaniemi révèle sa relation avec son environnement et fait apprécier à chacun le caractère unique de l'existence ainsi que les miracles de la vie. L'alliance de la puissance et de la fragilité est au cœur de ses créations, majestueuses et visuellement délicates. Les forces et les contre-forces, sont une façon pour l'artiste de s'exprimer et de traiter le chaos dans lequel nous vivons. L'œuvre artistique de Rintaniemi est reconnue tant au niveau national qu'international, ayant reçu le premier prix du concours international d'art céramique contemporain de Faenza, en Italie, en 2013.

## Päivi Rintaniemi (FI)

*Ara, Thesaurus*

---

The sculptural ceramics of Finnish artist Päivi Rintaniemi are meditative and mystical, bringing forth clarity and luminosity, while echoing the Nordic radiance. With its organic, folded and split form, *Ara* is a metaphor for man's sensitive and spiritual relationship with nature. The chamotte stoneware comes to life under the delicate touch from which round and harmonious surfaces emerge, like cracked shells, chrysalises, nests or corollas. Through her sculptures, Rintaniemi reveals her relationship with her environment and makes everyone appreciate the uniqueness of existence and the miracles of life. The combination of power and fragility is at the heart of her majestic and visually delicate creations. Strengths and counter-strengths are the artist's way of expressing herself and dealing with the chaos in which we live. Rintaniemi's artistic work is recognised both nationally and internationally, having been awarded first prize in the International Contemporary Ceramic Art Competition in Faenza, Italy, in 2013.

## Bela Silva (PT)

*Papagaio, Tropical et Une bouche pleine de baisers*

---

L'artiste portugaise Bela Silva qui partage sa vie entre Bruxelles et Lisbonne apporte une esthétique baroque contemporaine à ses sculptures en céramique uniques, exubérantes et narratives. S'inspirant d'un éventail éclectique d'influences issues de ses voyages, de l'histoire de l'art et de l'archéologie, elle orne ses récipients et ses créations de formes organiques audacieuses, d'animaux bizarres ou d'interprétations solidement charpentées de motifs décoratifs classiques. Trois nouvelles sculptures en grès émaillé sont exposées au PAD : *Papagaio, Tropical* et *Une bouche pleine de baisers*. Avec ses formes végétales qui s'entrecroisent, Bela Silva a créé un certain nombre de projets d'art public, notamment ses fresques murales surréalistes et joyeuses pour la station de métro Alvalade à Lisbonne et des expositions majeures dans sa ville d'origine ainsi qu'à Paris et à Bruxelles... Elle peint également des œuvres vibrantes sur papier, qui mettent en évidence sa ligne sans fin et son monde imaginaire intérieur. Spazio Nobile lui a déjà dédié une vingtaine d'expositions de groupe et en solo depuis 2017.

## Bela Silva (PT)

*Papagaio, Tropical et Une bouche pleine de baisers*

---

Portuguese artist Bela Silva, who divides her time between Brussels and Lisbon, brings a contemporary baroque aesthetic to her unique, exuberant and narrative ceramic sculptures. Drawing on an eclectic range of influences from her travels, art history and archaeology, she adorns her vessels and creations with bold organic forms, bizarre animals or robust interpretations of classical decorative motifs. Three new glazed stoneware sculptures are on display at PAD: *Papagaio, Tropical* and *A Mouthful of Kisses*. With her intertwining plant forms, Bela Silva has created a number of public art projects, including her surreal and joyful murals for the Alvalade metro station in Lisbon and major exhibitions in her home city and in Paris and Brussels... She also paints vibrant works on paper, which highlight her endless line and inner fantasy world. Spazio Nobile has already dedicated some twenty group and solo exhibitions to her since 2017.



## Ann Beate Tempelhaug (NO)

*Ouvert*

---

Depuis plus de trente ans, l'artiste norvégienne Ann Beate Tempelhaug avance au jour le jour sur la création d'imposantes céramiques dont certaines ont intégré de prestigieuses collections, comme celle du Musée national d'Oslo ou le bureau du Président norvégien. Ses pièces aux formes libres entièrement peintes à la main, faces et tranches comprises, témoignent de sa curiosité et de son inlassable poursuite de la beauté dans les couleurs et les formes du quotidien. Sa démarche créative explore de nouveaux procédés révélant la capacité des moments les plus fugaces à influencer le monde dans lequel nous vivons. Les paysages qui l'entourent, dans le sud, et les régions montagneuses de l'ouest de la Norvège la fascinent pour leur immensité et leurs saisissants contrastes, mais aussi pour leur résonance symbolique : « Les paysages renvoient toujours à la beauté et à la mort », déclarait l'artiste danois Per Kirkeby. Son travail souvent comparé à celui du peintre suédois August Strindberg tisse des liens avec sa vie et ses souvenirs et a pour vocation d'inciter à vivre l'instant comme le pinceau d'un peintre qui étale sa couleur par couches subtiles et successives sur sa toile. L'œuvre ne resterait-elle pas toujours inachevée ? L'exposition personnelle *"Nord"* de Ann Beate Tempelhaug, aura lieu chez Spazio Nobile de septembre à novembre 2023 avec le soutien du Norwegian Crafts & Norwegian Ministry of Foreign Affairs..

## Ann Beate Tempelhaug (NO)

*Ouvert*

---

For more than thirty years, Norwegian artist Ann Beate Tempelhaug has been working day by day on the creation of imposing ceramics, some of which have become part of prestigious collections, such as that of the National Museum of Oslo or the office of the Norwegian President. His free-form pieces, entirely hand-painted, including the sides and edges, bear witness to his curiosity and his tireless pursuit of beauty in the colours and shapes of everyday life. Her creative process explores new ways of revealing the capacity of the most fleeting moments to influence the world we live in. The landscapes around her in the south and the mountainous regions of western Norway fascinate her for their vastness and striking contrasts, but also for their symbolic resonance: "Landscapes always refer to beauty and death", said the Danish artist Per Kirkeby. His work, often compared to that of the Swedish painter August Strindberg, weaves links with his life and his memories and aims to encourage us to experience the moment like the brush of a painter who spreads his colour in subtle and successive layers on his canvas. Doesn't the work always remain unfinished? Tempelhaug's solo show *"Nord"* will take place at Spazio Nobile from September-November 2023 and supported by Norwegian Crafts & Norwegian Ministry of Foreign Affairs

Joost van Bleiswijk (NL)  
*Sketch Console, Lights on the Block*

Les lampes de table *Light on the Block* du créateur néerlandais Joost van Bleiswijk sont posées tels des monolithes en laiton, cuivre et aluminium sur la console *Sketch* qui joue tel un jeu de baguettes chinoises avec l'espace environnant. À partir de ses esquisses libres et constructivistes, Joost travaille le métal sous toutes ses formes dans son workshop d'Eindhoven qu'il anime avec sa compagne et partenaire Kiki van Eijk. La superposition des matières tel un collage de différents métaux et finitions l'ont conduit à concevoir ces luminaires nobles et pour certains patinés. Dans la construction de ses objets et mobiliers, le créateur improvise le dessin de structures à la fois libres et architecturées qu'il découvre dans un acte physique et spontané. Il joue avec de nouveaux éléments pour satisfaire l'élaboration de chaque objet, donnant à ses pièces le sentiment d'être dans une perpétuelle évolution et croissance. Son exposition en solo au Central Museum d'Utrecht en 2020 a été suivie par son duo show à la galerie, « Serendipity », avec sa partenaire Kiki van Eijk en 2022 et prochainement s'ouvrira l'exposition « *A Forest of Collision and Raku* », *Masterly – The Dutch* in Milano, du 17 au 23 avril 2023.

Joost van Bleiswijk (NL)  
*Sketch Console, Lights on the Block*

The table lamps *Light on the Block* by Dutch designer Joost van Bleiswijk are placed like monoliths in brass, copper and aluminium on the *Sketch* console, which plays with the surrounding space like a game of chopsticks. From his free and constructivist sketches, Joost works with metal in all its forms in his workshop in Eindhoven, which he runs with his companion and partner Kiki van Eijk. The superposition of materials, like a collage of different metals and finishes, has led him to design these noble and, in some cases, patinated luminaires. In the construction of his objects and furniture, the designer improvises the design of structures that are both free and architectural, which he discovers in a physical and spontaneous act. He plays with new elements to satisfy the construction of each object, giving his pieces the feeling of being in a perpetual evolution and growth. His solo exhibition at the Central Museum in Utrecht in 2020 was followed by his duo show at the gallery 'Serendipity' with his partner Kiki van Eijk in 2022. His upcoming exhibition with Kiki van Eijk, « *A Forest of Collision and Raku* », at *Masterly – The Dutch* in Milano, will happen from 17 to 23 April 2023.

Kiki van Eijk (NL)

*Structuring Chaos, Raku, Free Form Lamp Pink*

---

La tapisserie *Structuring Chaos* en noeuds de passementerie et raku est un projet très expérimental mené en 2022-2023 par l'artiste designer néerlandaise Kiki van Eijk, en collaboration avec le TextielLab de Tilburg /TextielMuseum aux Pays-Bas. Il allie la structure d'éléments de céramique raku à une passementerie nouée évoquant le chaos dans lequel l'humanité est plongée et la résilience humaine qui se rattache à des traditions ancestrales telles le raku, une technique mise au point au Japon au XVIe siècle. La collection des *vases Raku* vient compléter cette expression de l'artiste designer dont le geste vient re-composer l'identité forte d'un objet, tel un collage imaginaire et coloré. La lampe *Free Form Light Pink* de Kiki, en faïence coulée et émaillée à la main, brille de l'intérieur pour refléter magnifiquement la lumière. Son exposition au Textiel Museum de Tilburg en 2020 a été suivie par son solo show « *The New Harvest* » chez Lempertz avec Spazio Nobile en 2021, le duo show à la galerie « *Serendipity* » avec Joost van Bleiswijk en 2022 et prochainement s'ouvrira l'exposition « *A Forest of Collision and Raku* », *Masterly* – The Dutch in Milano, du 17 au 23 avril 2023.

Kiki van Eijk (NL)

*Structuring Chaos, Raku, Free Form Lamp Pink*

---

The tapestry *Structuring Chaos* made of passementerie knots and raku is a highly experimental project by the Dutch artist-designer Kiki van Eijk in collaboration with the TextielLab in Tilburg /TextielMuseum in the Netherlands in 2022-2023. It combines the structure of raku ceramic elements with knotted trimmings that evoke the chaos in which humanity is immersed and the human resilience that is linked to ancient traditions such as raku, a technique developed in Japan in the 16th century. The collection of *Raku vases* completes this expression of the artist-designer whose gesture re-composes the strong identity of an object, like an imaginary and colourful collage. Kiki's *Free Form Light Pink*, made of hand casted and glazed earthenware, shines from the inside to reflect the light beautifully. Her exhibition at the Textiel Museum in Tilburg in 2020 was followed by her solo show "*The New Harvest*" at Lempertz with Spazio Nobile in 2021 and the duo show at the gallery "*Serendipity*" with Joost van Bleiswijk in 2022. Her upcoming exhibition with Joost van Bleiswijk, "*A Forest of Collision and Raku*", at *Masterly* - The Dutch in Milano, will happen from 17 to 23 April 2023.

Vera Vermeersch (BE)

*Tu sei come una terra...*

---

La créatrice textile belge Vera Vermeersch est passée maître dans l'art de traduire en tapisseries la virtuosité et la poésie du dessin original, à partir d'esquisses et d'aquarelles. Ses tapisseries lyriques et intimistes comme ses deux nouveaux kakémonos « *Tu sei come una terra...* », qui sortent directement de son atelier, s'inscrivent en continuité de son nouveau corpus d'œuvres tuftées à la main, inspirées par la lumière, les ombres et les rayons du soleil qu'elle observe et qui apparaissent dans le paysage de la vallée piémontaise qui entoure sa maison de campagne, *La Palude*. Son approche artistique implique toujours une lecture critique, méticuleuse et stratifiée, une interprétation et une réinterprétation du sujet donné pour le sublimer dans une composition dont elle détient les secrets, la palette de couleurs, l'entrelacement des fils et le génie de la matière.

Vera Vermeersch (BE)

*Tu sei come una terra...*

---

The Belgian textile artist Vera Vermeersch is a master in the art of translating the virtuosity and poetry of the original drawing into tapestries, based on sketches and watercolours. Her lyrical and intimate tapestries, such as her two new kakemonos "*Tu sei come una terra...*", which come directly from her studio, are a continuation of her new body of hand-tufted work, inspired by the light, shadows and rays of the sun that she observes and that appear in the landscape of the Piedmont valley that surrounds her country house, *La Palude*. Her artistic approach always involves a critical, meticulous and layered reading, an interpretation and reinterpretation of the given subject to sublimate it in a composition of which she holds the secrets, the colour palette, the interweaving of threads and the genius of the material.

## Fabian von Spreckelsen (BE)

### *Leather Cabinet - Books*

---

Alliant deux matières organiques, le fer érodé dans le feu et le cuir tanné, Fabian von Spreckelsen présente *Books* qui est l'un des mobiliers sculpturaux de la collection de ses sept cabinets dont font aussi partie *Comfort*, *Drinks*, *Journal*, *Keys*, *Little Secrets* et *Treasure*, chacun symbolisant un stade important de son existence. Le rituel tient au geste direct de la main soulevant la peau de cuir pour révéler l'intérieur du mobilier-sculpture. « Dans la vie, nous atteignons différentes étapes, ces périodes sont jalonnées d'expériences et découvertes. Ces cabinets font référence aux objets de ce vécu quotidien, émotionnel et spirituel. Ils sont façonnés pour relier ces histoires personnelles : les livres marquants, le bar à cocktails, les petits secrets, les clefs de l'indépendance, le confort et le réconfort auprès des êtres aimés, les trésors et souvenirs, le journal intime... » Ces « cabinets d'intimité » évolutifs, conçus sur mesure, prennent la forme de leur objet.

## Fabian von Spreckelsen (BE)

### *Leather Cabinet - Books*

---

Combining two organic materials, weathered iron and tanned leather, Fabian von Spreckelsen presents *Books*, which is part of the collection of seven cabinets, including *Comfort*, *Drinks*, *Journal*, *Keys*, *Little Secrets* and *Treasure*, each symbolising an important stage in his existence. The ritual lies in the simple gesture of lifting the leather to reveal the interior of the furniture-sculpture. "In life, we reach different stages; periods punctuated by experiences and discoveries. The cabinets refer to the objects of this daily, emotional and spiritual experience. They are made to connect these personal stories: the significant books, the cocktail bar, the little secrets, the keys to independence, the comfort and reassurance of loved ones, the treasures and memories, the personal diary, etc." These evolving, bespoke "personal cupboards" take the form of their object.

Quentin Vuong (FR)  
*Mercury & Votive*

---

La recherche expérimentale de Quentin Vuong allie les matériaux nobles et les techniques artisanales souvent ancestrales. Il crée des objets délicats tels que les miroirs *Mercury*. La surface en résine fine laquée des miroirs *Mercury* est dorée à la main à la feuille de caplain (alliage de platine, de palladium et d'or). La qualité de leur reflet délicatement troublé et incurvé attire le regard tel un « miroir de l'âme ». Il en découle un équilibre entre la fonctionnalité de l'objet et sa dimension poétique qui prend sa patine avec le temps. Vuong a développé plus récemment les *Votive Stools* pour Spazio Nobile. La galerie le représente depuis 2021 et présentera sa première exposition personnelle en 2024.

Quentin Vuong (FR)  
*Mercury & Votive*

---

Quentin Vuong's experimental research combines noble materials and often ancestral craft techniques. He creates delicate objects such as the *Mercury mirrors*. The fine lacquered resin surface of the *Mercury mirrors* is hand-gilded with caplain leaf (an alloy of platinum, palladium and gold). The quality of their delicately disturbed and curved reflection attracts the eye like a "mirror of the soul". The result is a balance between the functionality of the object and its poetic dimension that takes on a patina over time. Vuong has more recently developed *Votive Stools* for Spazio Nobile. The gallery has represented him since 2021 and will present his first solo exhibition in 2024.

Philipp Weber (DE)  
*Filigree*

---

Philipp Weber ancre et traduit ses explorations discursives et sans hâte en concepts tangibles et en formes fonctionnelles. Il pousse des techniques séculaires au-delà de leurs limites et suggère à son tour des moyens d'assurer leur survie. Il n'est pas étonnant que le verre soit l'un de ses supports de prédilection. Spazio Nobile a développé avec lui la collection de luminaires *Filigree*, qui revisite l'esthétique de la technique vénitienne du XVI<sup>e</sup> siècle : le filigrane (vetro duro étiré). Ses créations mettent en scène le geste et la chorégraphie du souffleur de verre.

Philipp Weber (DE)  
*Filigree*

---

Philipp Weber anchors and translates his unhurried, discursive explorations into tangible concepts and functional forms. He pushes age-old techniques beyond their limits and in turn suggests ways to ensure their survival. It is not surprising that glass is one of his favourite media. Together with him, Spazio Nobile has developed the *Filigree* collection of lighting fixtures, which revisits the aesthetics of the 16th century Venetian technique of filigree (stretched *vetro duro*). His creations feature the gesture and choreography of the glassblower.



### Lise Coirier (FR-BE)

Art Historian, Art Curator and Publisher,  
Co-founder of Spazio Nobile

---

With degrees in management and art history, French-born Lise Coirier has lived and worked in Brussels for 30 years. There, she has run her consulting agency Pro Materia for 20 years, and remains committed to managing projects that she creates from the start. She is Founder and Editor-in-Chief of *TL Magazine True Living of Art & Design*, started in 2008, a bilingual (FR/EN) biannual magazine available in print and online, and dedicated to culture, art and contemporary design. Lise Coirier has also initiated several European projects, such as Human Cities and Glass is Tomorrow. An exhibition curator, she has in addition edited several books, including “*Le Guide des Métiers d’art à Bruxelles et environs*” (ed. Best of Publishing / Fondation pour les arts, 1998 - 2000), “*Design in Belgium - 1945-2000*” (ed. Racine, 2002),

*Design.be, Belgium is Design* (ed. Stichting Kunstboek, 2015 - 2010), monographs of Xavier Lust (ed. Stichting Kunstboek, 2008) and Anne Derasse (ed. Betaplus, 2014), *Glass is Tomorrow* (ed. Pro Materia / Archibooks, 2015), and more. In 2016, she opened Spazio Nobile Gallery in Brussels, with her partner and husband Gian Giuseppe Simeone, specialised in contemporary applied arts, design and photography.





## Gian Giuseppe Simeone (IT-SE)

Art Historian & Archæologist,  
Co-Founder of Spazio Nobile

---

Gian Giuseppe Simeone is an art historian and archaeologist specialised in the preservation and valorisation of cultural and artistic heritage. Italo-Swedish, based in Brussels since 1979, he works as a consultant on cooperation projects and programmes in the fields of contemporary creation and cultural heritage for the European Commission and other national and international organisations. His consulting firm Culture Lab, launched in 2002, focusses on the design and management of international cooperation projects and programmes in the field of culture, primarily supported by the European Union. Within this context, he has contributed to the implementation of major exhibitions, research programmes and co-productions ventures in disciplines including heritage, music, theatre, the visual arts and design. He has also carried out several

study, assessment and consulting missions in Europe, Africa and the Mediterranean, with the goal of highlighting the importance of culture in the policies of the European Union, and its role in socio-economic development. Gian Giuseppe Simeone is author of several reference works on the study and recognition of the value of European and international culture and heritage. In 2016, he co-founded the Spazio Nobile gallery with Lise Coirier.

## PAD Paris *Jardin des Songes*, Group Show

François Azambourg, Foyer Brisé, Sébastien Caporusso,  
Florence Coenraets, Marie Corbin, Vincent Fournier,  
Ernst Gamperl, Éva Garcia, Garnier & Linker,  
Kaspar Hamacher, Pao Hui Kao, Katherine Huskie,  
Päivi Rintaniemi, Bela Silva, Ann Beate Tempelhaug,  
Joost van Bleiswijk, Kiki van Eijk, Vera Vermeersch,  
Fabian von Spreckelsen, Quentin Vuong, Philipp Weber

Collectors Preview VIP Opening  
29.3.2023 30.3.2023  
11.00-20.00 11.00-20.00  
By invitation only By invitation only

Public Opening  
31.3-1.4.2023, 11.00-20.00  
2.4.2023, 11.00-18.00

PAD Paris  
Jardin des Tuileries  
75001 Paris - France



Spazio Nobile Gallery & Studiolo  
Season XXV - *Interlude*, Group Exhibition  
142-169 rue Franz Merjay  
1050 Brussels  
10.3-23.4.2023

Spazio Nobile Gallery  
*Season XXVI*  
*Super Specimens - Sensations Of The Extraordinary*  
Vincent Fournier  
Solo Show  
28.4 - 20.7.2023

Masterly, Milan Design Week  
*A Forest of Collision and Raku*  
Kiki van Eijk & Joost van Bleiswijk, Duo Show  
Palazzo Giureconsulti, Milan, Italy  
18-23.4.2023

Spazio Nobile Gallery  
Season XXVII  
Ann Beate Tempelhaug, *Nord*, Solo Show,  
8.9-19.11.2023  
Vernissage 7.9.2023

Spazio Nobile  
Contemporary  
Applied Arts, Design &  
Photography

Rue Franz Merjay, 142-169,  
1050 Brussels, Belgium  
+32 2 768 25 10  
www.spazionobile.com

Me - sa / wo - za / Wed  
- Sat, 11.00-18.00 & sur  
rendez-vous / op afspraak /  
by appointment

Lise Coirier,  
+32 475 53 19 88,  
lc@spazionobile.com

Gian Giuseppe Simeone  
+32 477 27 29 04,  
ggs@spazionobile.com

Eugénie Frémiot,  
+32 477 73 37 58,  
eugenie@spazionobile.com



When art historians Lise Coirier and Gian Giuseppe Simeone opened Spazio Nobile in 2016 in the lively and cosmopolitan Brugmann Square area of Brussels, they combined their passions for design and art history, establishing a scholarly dialogue between contemporary applied arts, design and photography. With no boundaries between disciplines, visual arts dialogue with fine arts. Having assembled a collection of unique pieces, limited editions and installations that are both experimental and artistic, with a particular sensitivity for all things related to nature and minerality, the gallery organises five exhibitions and events each year in art and heritage venues (Maison Louis Carré, Yvelines, France, arch. Alvar Aalto; Ancienne Nonciature, Grand Sablon; Lempertz (former Leroy Frères gallery), Brussels, etc). Spazio Nobile also participates in Belgian and international fairs such as Art Brussels, Luxembourg Art Week, Art on Paper, Collectible Design Fair, PAD Paris and PAD London, Design Miami/Basel, NOMAD Capri / Saint Moritz, Unique Design Shanghai, etc. The gallery celebrates its 7th anniversary in 2023 and represents some twenty emerging and internationally renowned artists and designers, while promoting excellent craftsmanship and the cultures of East and West. Spazio Nobile also publishes TLMag, True Living of Art & Design, created by Lise Coirier in 2008; through this bi-annual art and design magazine, available in print and online, the gallery shares its selection and its artistic and cultural commitment to collectible art and design. Spazio Nobile has been awarded the Homo Faber label of excellence and continues to explore its international project Glass is Tomorrow. In 2020, Spazio Nobile opened Spazio Nobile Studiolo, a permanent exhibition space, opposite the main gallery which is located on the beautiful floor of a 1920s house and the founders have extended the gallery experience to their villa in Tervuren, Spazio Nobile At Home.

SPAZIO  
NOBILE

*Contemporary Applied Arts, Design & Photography*

@spazionobilegallery #spazionobile